



Wind Things Up With Reelcraft

Tech Bulletin

7000 Constant Tension Requirements

MODELS

LOW, MEDIUM, HIGH PRESSURE

Low Pressure

7650 OLP

7670 OLP

7850 OLP

7925 OLP

F7925 OLP

7600 OLP

7600 OLP

7800 OLP

7900 OLP

F7900 OLP

Medium Pressure

7650 OMP

7850 OMP

7600 OMP

7800 OMP

High Pressure

7450 OHP

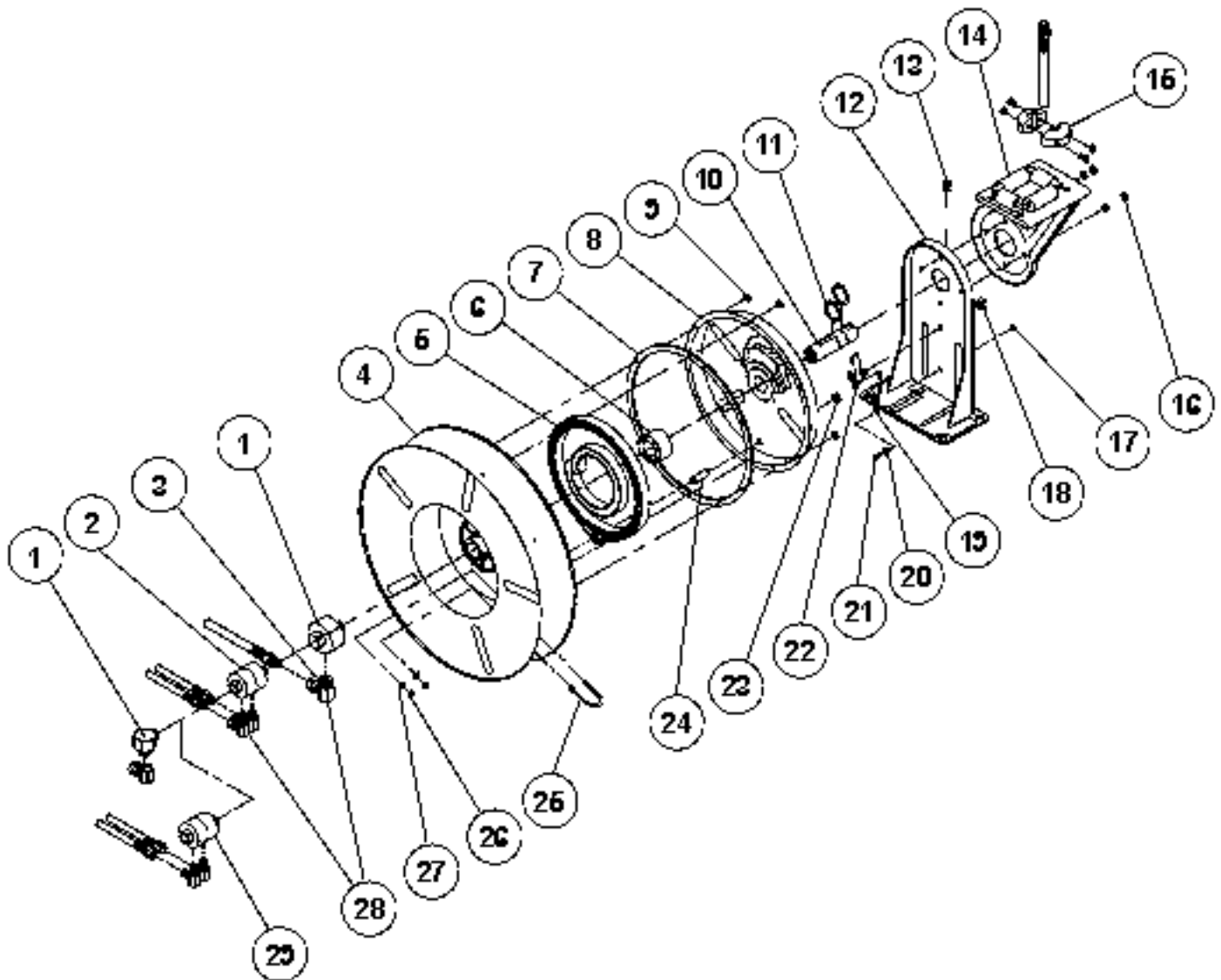
7650 OHP

7400 OHP

7600 OHP

The following parts should be removed from the reel to make it constant tension.

Part No.	Qty.	Description	
600018	1	Latch Pawl Ass'y	#22 on exploded view
260067	1	Latch Spring	#19 on exploded view
400012	1	Latch Bushing	#20 on exploded view
S82-15	1	Nyloc Nut	#17 on exploded view
S280-8	1	Hex Flange Nut	#18 on exploded view
S20-110	1	Set Screw	#21 on exploded view





Wind Things Up With Reelcraft

PARTS COMMON TO ALL PAINTED/STAINLESS REELS

ITEM NO.	PAINTED PART NO.	STAINLESS	NO REQ.	DESCRIPTION	ITEM NO.	PAINTED PART NO.	PAINTED STAINLESS	NO REQ.	DESCRIPTION	ITEM NO.	PAINTED PART NO.	PAINTED STAINLESS	NO REQ.	DESCRIPTION
4	260011	600063	1	Sheave Assembly	13	NONE	S47-66	1	3/8-16 x 1/2" Setscrew	22	S600018	S600069	1	Latch Pawl Ass'y
6	S600621	S600621	1	Spring Arbor Ass'y	14	S600017	S600068	1	Guide ARm w/rollers	23	S76-106	S74-106	1	3/8-24 Jam Nut
7	S260069	S260069	1	Gasket	16	300017	S73-5	4	5/16-18 Locknut	24	S260031	260256	1	Springcase stud
8	S260074	600065	1	Spring Case Ass'y	17	S82-15	S95-22	1	10-32 X 3/8" Nyloc Nut	26	300070	S96-13	4	1/4-20 x 3/8" Locknut
9	300011	260239	6	10-32 Hex Locknut	18	S280-8	S72-8	1	1/2-20 x 5/8" Hex Nut	27	300039	S108-4	4	1/4" Flat washer
11	300007	S147-26	2	1 1/4" Snap Ring	19	S260067	S260067	1	Latch Spring					
12	600016	600067	1	Base Assembly	20	S400012	S260225	1	Bushing					
13	S35-51	NONE	1	1/2-13 Setscrew	21	S20-110	S46-110	1	10-32 x 7/8" Screw					

PARTS COMMON TO STANDARD REELS (NON STAINLESS, TW OR TH)

ITEM NO.	DESCRIPTION	NO. REQ.	74XX OHP	76XX OLP	76XX OMP	76XX OHP	78XX OLP	78XX OMP	79XX OLP
1	Swivel Assembly	1	S600007	S600888	S602033	S600007	S600888-1	S602033	S602026
3	90° Ell	2	None	None	None	None	None	None	S157-5
5	Drive Spring Ass'y	1	S260053	*Note	S260053	S260053	S260037	S260053	S600023
10	Main Shaft	1	S260095	S260095	S260095	S260095	S260095	S260095	260095-1
15	Hose Bumper Ass'y	1	1-HR1004-3	1-HR1004-3	1-HR1004-3	1-HR1004-3	1-HR1004-3	2-HR1004-3	3-HR1004-3
25	U-bolt	2	2-117440	2-117440	2-117440	3-117440	2-117440	3-117440	5-117440
28	Swivel Union	1	S257-11	S257-26	S257-26	S257-11	S257-11	S257-26	None

PARTS COMMON TO (TH) TWIN HYDRAULIC REELS

ITEM NO.	DESCRIPTION	NO. REQ.	TH74XX OMP	TH76XX OMP
2	Swivel & Ell Ass'y	1	600995-1	602034-1
5	Drive Spring Ass'y	1	S260053	S260053
10	Main Shaft	1	260351	260095-2
25	U-bolt	2	1-117440	2-117440
28	Swivel Union	2	S257-2	S257-25

NOTE: Drive spring assembly part numbers for 7600 OLP and 7670 OLP is S260028. Drive spring assembly part numbers for 7640 OLP and 7650 OLP is S260028-1.

- * All hose assemblies supplied on models designated OMP comply with SAE 100R1 hose specifications.
- ** All hose assemblies supplied on models designated OHP comply with SAE 100R2 hose specifications.
- *** Reel less hose, model series TW7000 OLP is U/L listed #70H2.
- ****Hose supplied on reel is Twin-Siamese type meeting R.M.A. and C.G.A. Type V.D., Grade RM specifications. Use of other types of hose is not recommended.

PARTS COMMON TO FUEL REELS

ITEM NO.	DESCRIPTION	NO. REQ.	F79XX OLP
1	Swivel Assembly	1	S602026-2
3	Swivel Union	1	S257-21
28	90° Ell	1	S157-4
-	Hose Assembly	1	600160-1
3/4" FPT, 200 PSI/F7925 OLP, 500 PSI/F7900 OLP			

PARTS COMMON TO (TW) TWIN WELD REELS

ITEM NO.	DESCRIPTION	NO. REQ.	TW7XXX OLP	TW7XXX OLPT
5	Drive Spring Ass'y	1	S260028	S260028
10	Main Shaft	1	260351	260351
15	Hose Bumper Ass'y	1	8-HR1004-3	8-HR1004-3
25	U-bolt	2	1-117440	1-117440
29	Swivel Assembly	1	S260057-3	S260057-1

PARTS COMMON TO OLB REELS

ITEM NO.	DESCRIPTION	NO. REQ.	76XX OLB	78XX OLB
1	Swivel Ass'y	1	600093-1	S600092-1
3	90° Ell	1	S160-3	S160-4
10	Main Shaft	1	261046	261045

PARTS COMMON TO STAINLESS REELS

ITEM NO.	DESCRIPTION	NO. REQ.	78XX OLS	78XX OMS
1	Swivel Ass'y	1	S600092-2	S600092-2
3	90° Ell	1	S160-4	S163-4
5	Drive Spring Ass'y	1	S260037	S260053
10	Main Shaft	2	261045	261045
25	U-bolt	1	260242	260242