

# Operating Instructions

## Display Stand

Model Numbers:

S602037-1

S602037-2

S602037-3



### Tools Required:

Socket wrench                      1/2" socket  
Socket wrench extension        Tape measure or 12" ruler

## INSTALLATION INSTRUCTIONS

### Step 1:

Preassemble twelve of the 45° corner brackets (#10) with four hex cap screws (#12) and four Nyloc lock nuts (#14), each side of the corner bracket (#10) gets one screw in the slot and one screw in the hole. See figure 1.

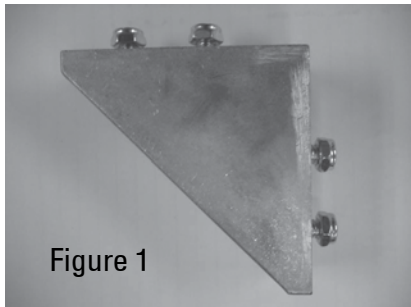


Figure 1

### Step 2:

Gather the 20° front legs (#4). Slide one of the preassembled corner brackets (#10) into the front leg (#4), by sliding the nuts into the slot of the leg. Position the bracket (#10) with the back edge flush with the end of the leg. Tighten the two screws to secure the bracket to the leg. (See figures 2 & 3). Repeat process of the second leg (#4).

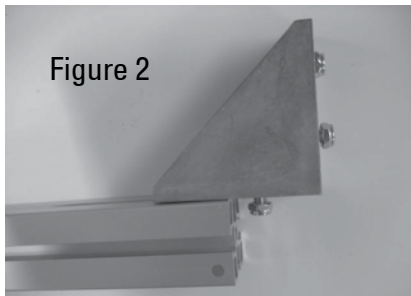


Figure 2

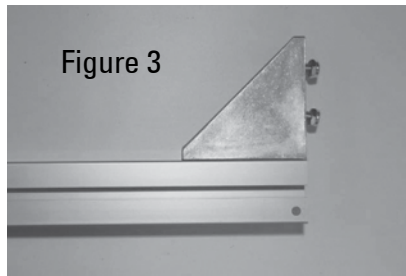


Figure 3

### Step 3:

Gather the two uprights (#2) and slide the nuts from the preassembled corner bracket (#10) and front leg (#4) into the slot of the upright (#2). Position the upright (#2) and leg (#4) so that the bottom of the upright (#2) is flush with the bottom of the front leg (#4). Tighten the two screws to secure the bracket to the upright (see figure 4). Repeat process for the second upright (#2).



Figure 4

### Step 4:

Gather the two cross bars with access holes (#8) and four preassembled corner brackets (#10). Slide a corner bracket (#10) into each end of the cross

bar (#8) locating the nuts of the corner brackets (#10) into the slot of the side directly above the access holes. Position the corner brackets (#10) so that the outside edge of each corner bracket (#10) is flush with the end of the cross bar (#8). See figures 5 and 6. Repeat process for the second cross bar with access holes (#8).

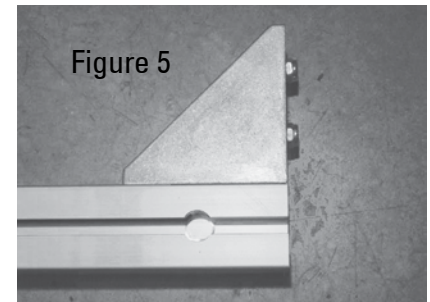


Figure 5

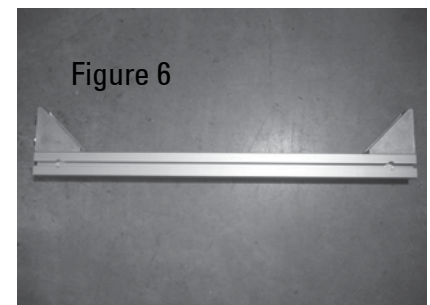
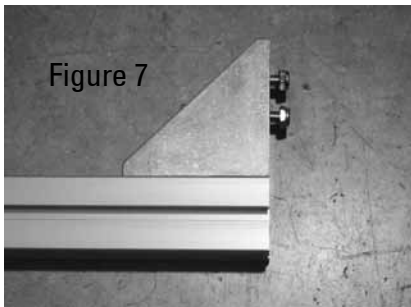


Figure 6

Form# 1173-705 Rev: 6/2013

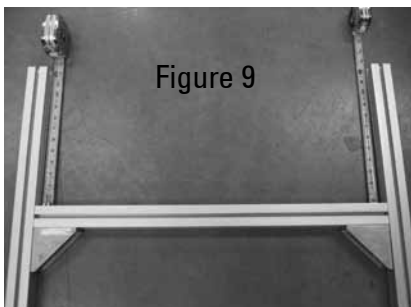
## Step 5:

Gather the two remaining cross bars (#3) and four preassembled corner brackets (#10). Slide a corner bracket (#10) into each end of the cross bar (#3) locating the nuts of the brackets into one of the slots of the cross bar (#3). Position the corner brackets (#10) so that the outside edge of each bracket is flush with each end of the cross bar (#3). Tighten the four screws to secure the two brackets to the cross bar. (See figures 7 and 8). Repeat process for the second cross bar (#3).



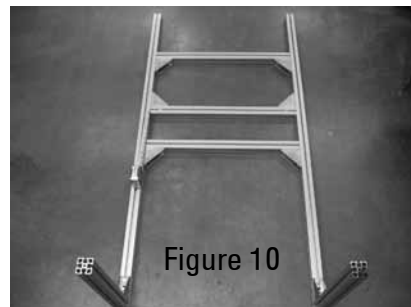
## Step 6:

Position the two upright (#2) & front leg (#4) assemblies flat on a hard surface with the legs pointing up. Slide one of the preassembled cross bars (#3), with the brackets pointing toward the legs, into the slots located inside the two uprights (#2). Position the cross bar (#3) twelve inches from the top of the uprights (#2) to the top of the cross bar (#3). Be sure to measure each side of the cross bar. Tighten the four screws in the brackets to secure the cross bar (#3) into position (see figure 9).



## Step 7:

Place one display stand adapter plate (#1) on the secured cross bar (#3) by sliding the bent end of the plate around the cross bar. From the leg end of the uprights slide one of the preassembled cross bars with access holes (#8), with the corner brackets (#10) pointing away from the legs and the access holes facing up, into the slots located inside the two uprights (#2). Position the cross bar (#8) so that the bottom of the cross bar (#8) is flush with the bottom of the display stand adapter plate (#1). Tighten the four screws in the brackets to secure the cross bar with access holes (#8) into position (see figure 10).



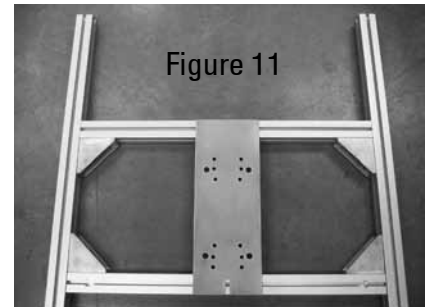
## Step 8:

From the leg end of the uprights, slide the remaining preassembled cross bar (#3), with the corner brackets (#10) pointing toward the legs, into the slots located inside the two uprights (#2). Position the cross bar (#3) six inches from the bottom of the secured cross bar with access holes (#8) to the top of the cross bar (#3), be sure to measure each side of the cross bar (#3). Tighten the four screws in the brackets to secure the cross bar (#3) into position.

## Step 9:

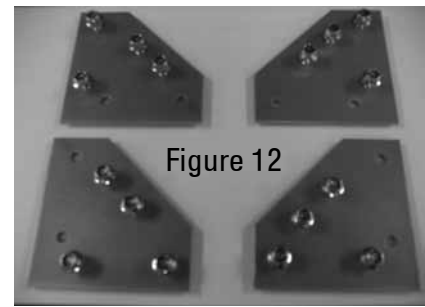
Place one display stand adapter plate (#1) on the second secured cross bar (#3) by sliding the bent end of the plate around the cross bar (#3). From the leg end of the uprights (#2) slide the remaining preassembled cross bar with access holes (#8), with the corner brackets (#10) pointing away from the front legs (#4), into the slots located inside the two uprights (#2). Position the cross bar (#8) so that the bottom of the cross bar (#8) is flush with the

bottom of the display stand adapter plate (#1). Tighten the four screws in the brackets to secure the cross bar with access holes (#8) into position (see figure 11).



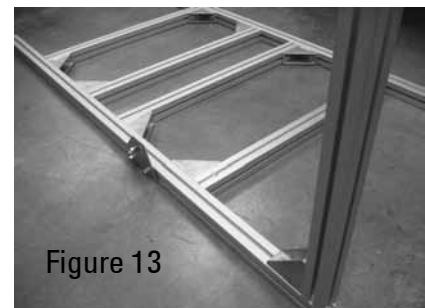
## Step 10:

Gather the four 45° support brackets (#7), sixteen cap screws (#12) and sixteen flange nyloc nuts (#9). Preassemble the support brackets (#7) as shown in figure 12. The two support brackets (#7) on the left will be for the left side of the display stand and the two on the right will be for the right side of the display stand.



## Step 11:

Slide the top left side preassembled support brackets (#7) into the bottom end of the left upright until it is near the middle of the lower set of cross bars. The cap screw (#12) heads will slide into the slots so the the flange nyloc nuts (#9) will be exposed (see figure 15).



**Step 12:**

Slide the bottom left side preassembled support bracket (#7) into one of the 45° supports (#6) as shown in figure 14. The cap screw (#12) heads will slide into the slots so that the flange nyloc nuts (#9) will be exposed.

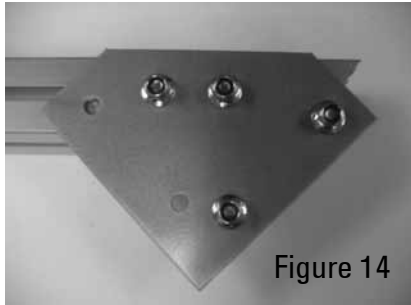


Figure 14

**Step 13:**

While holding the 45° support (#6) and 45° support bracket (#7) slide the cap screws (#12) sticking out from the 45° support bracket (#7) into the slot of the left front leg (#4) while sliding the 45° support (#6) onto the cap screws (#12) of the second support bracket (#7) that is slid into the upright (#2). Once the 45° support (#6) is in place align the end of the support near flush with the end of the leg and tighten the eight cap screws (#12) to secure the 45° support (#6) (see figure 15).

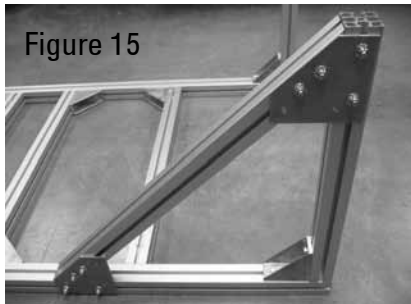


Figure 15

**Step 14:**

Slide the top right side preassembled support bracket (#7) into the bottom end of the right upright (#2) until it is near the middle of the lower set of cross bars. The cap screw (#12) heads will slide into the slots so that the flange nyloc nuts (#9) will be exposed (see figure 16).

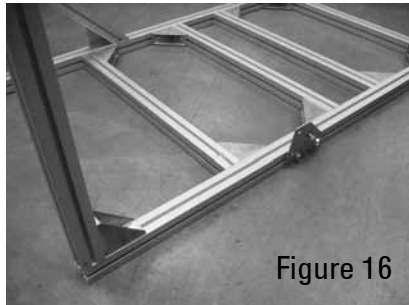


Figure 16

**Step 15:**

Slide the bottom right side preassembled support bracket (#7) into the remaining 45° support (#6) as shown in figure 17. The cap screw (#12) heads will slide into the slots so that the flange nyloc nuts (#9) will be exposed.

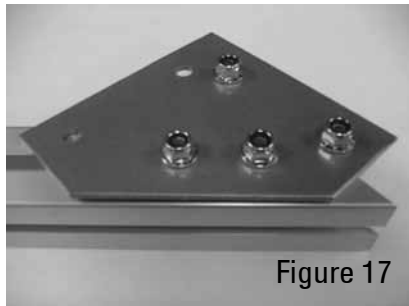


Figure 17

**Step 16:**

While holding the 45° support (#6) and 45° support bracket (#7) slide the cap screws (#12) sticking out from the 45° support bracket (#7) into the slot of the right front leg (#4) while sliding the 45° support onto the cap screws (#12) of the second support bracket (#7) that is slid into the upright (#2). Once the 45° support (#6) is in place align the end of the support near flush with the end of the leg and tighten the eight cap screws (#12) to secure the 45° support (#6) (see figure 18).

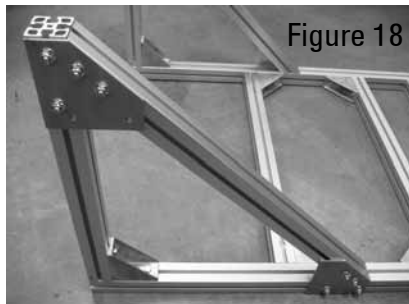


Figure 18

**Step 17:**

Gather the two back legs (#5) and the remaining two preassembled 45° corner brackets (#10). Slide one of the preassembled corner brackets into the back leg (#5) by sliding the nuts into the slot of the leg. Position the corner bracket (#10) with the back edge flush with the end of the leg. Tighten the two screws to secure the bracket to the leg. Repeat process for the second back leg (#5) (see figure 19).

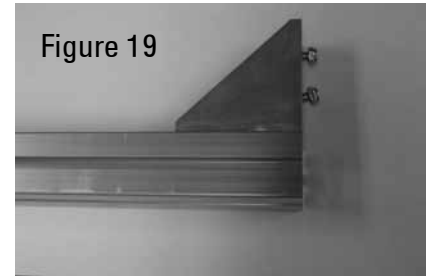


Figure 19

**Step 18:**

Turn the upright assembly over onto one side. Slide one of the preassembled back legs (#5) into the bottom of the upright (#2) until the bottom of the back leg (#5) is flush with the bottom of the upright (#2). Tighten the two screws to secure the leg to the upright. Slide the second preassembled back leg (#5) into the bottom of the opposite upright (#2) until the bottom of the back leg (#5) is flush with the bottom of the upright (#2). Tighten the two screws to secure the back leg (#5) to the upright (#2) (see figure 20).

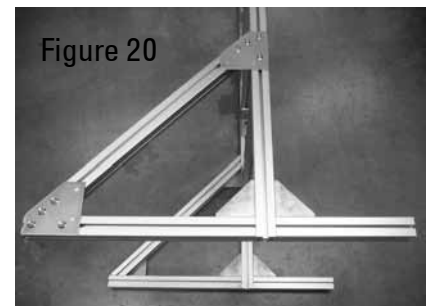


Figure 20

### Step 19:

Gather four of the end caps (#11) and attach them to the ends of both of the front legs (#4) and the back legs (#5) (see figure 21).

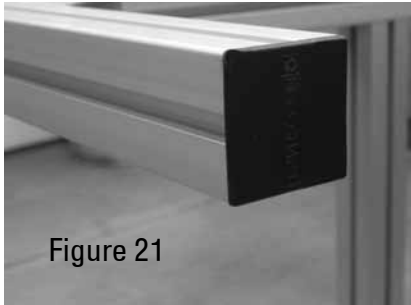


Figure 21

### Step 20:

Stand the display stand assembly upright. Gather six of the cap screws (#12) and slide three in each of the two cross bars with access holes (#8) by sticking the head of the cap screw (#12) into the access hole then slide into position (see figure 22).

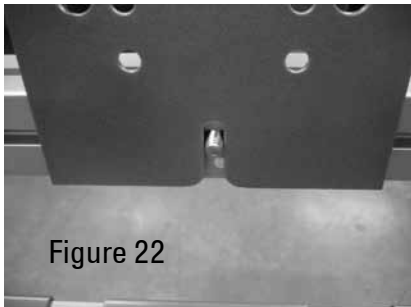


Figure 22

### Step 21:

Place the six display stand adapter plates (#1) into position by sliding the bent end over the top cross bars (#3) and aligning the cap screw (#12) into the slot located in the bottom of the display stand adapter plate (#1) (see figures 23 and 24).

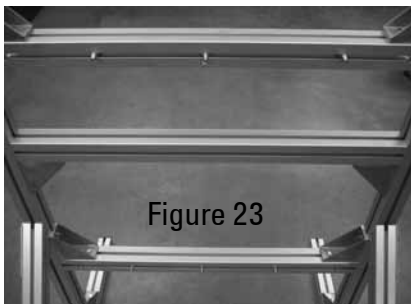


Figure 23

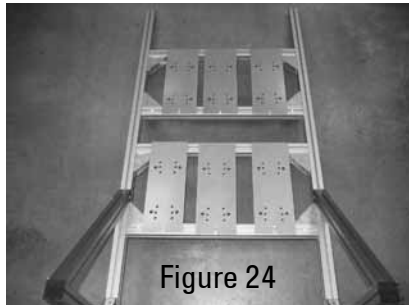


Figure 24

### Step 22:

Gather six of the lock nuts (#13) and hand tighten them to the cap screws (#12) to hold the display stand adapter plate (#1) in place (see figure 25).

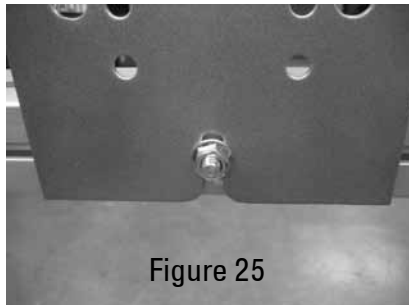


Figure 25

### Step 23:

Gather the four strips of graphic gasket and slide two down into the top of the upright (#2) in the slot facing the cross bars, refer to Figure 26 for orientation. Repeat for the other upright.

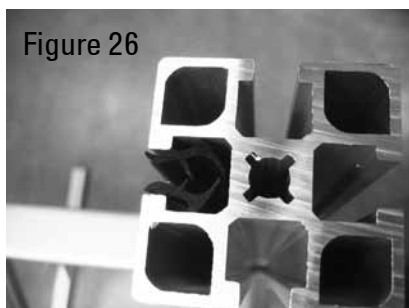


Figure 26

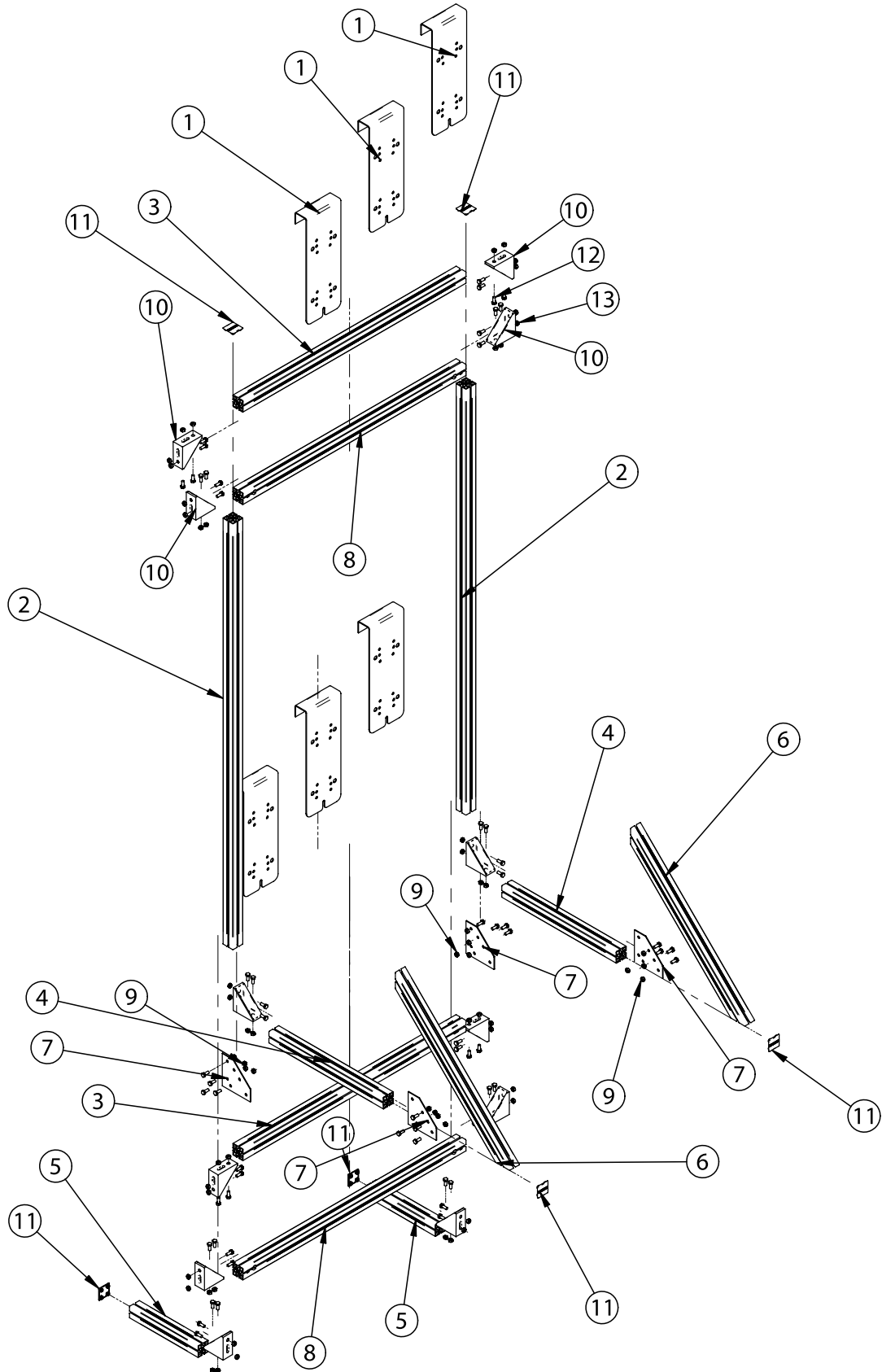
### Add reels to display stand

To assemble a reel to the display stand align the mounting holes of the reel with the appropriate mounting hole pattern on the display stand adapter plate (#1). Attach the reel using four cap screws (#12) and four lock nuts (#13). The display stand adapter plates can be adjusted to set proper spacing on the display stand (see

figure 27).



Figure 27



## Parts List

Quantity / Model

NO.	S602037-1	S602037-2	S602037-3	PART#	DESCRIPTION
1	8	6	4	261918-37	Plate, Display Stand Adapter
2	2	2	2	261919	Upright
3	2	0	0	261920-1	Cross Bar
3	0	2	0	261920-2	Cross Bar
3	0	0	2	261920-3	Cross Bar
4	2	2	2	261921	Leg, Front
5	2	2	2	S261922	Leg, Back
6	2	2	2	S261923	Suport, 45°
7	4	4	4	261924-37	Support Bracket, 45°
8	1	0	0	261948-1	Graphics, Display Stand
8	0	1	0	261948-2	Graphics, Display Stand
8	0	0	1	261948-3	Graphics, Display Stand
9	4	4	4	261950	Gasket, Graphic Stabilizer
10	2	0	0	261951-1	Cross Bar (with end holes)
10	0	2	0	261951-2	Cross Bar (with end holes)
10	0	0	2	261951-3	Cross Bar (with end holes)
11	16	16	16	261650	Lock Nut, Hex Flange with Nylon Insert
12	12	12	12	261739-R	45° Bracket
13	6	6	6	261740	Cap, End
14	40	30	20	300107	Lock, Nut
15	104	94	84	S2-53	Screw, Hex Cap
16	48	48	48	S85-7	Nut, Nyloc