

Operating Instructions

Hose / Electrical Reel Cabinets

1 Bank = #600367

2 Bank = #600178

APPLICATIONS

The Reelcraft 7000 Cabinet is designed for use with Reelcraft 7000 C Series hose reels. By using special adapter, part number 600230, the 7000 cabinet may be modified for use with 4000 and 5000 series reels.

INSTALLATION

The following installation procedure is applicable for all 7000 Cabinet installations. If 4000 or 5000 Series hose reels are to be installed in conjunction with the cabinet, perform all steps of the following procedure (adapter, part number 600230, required). If 4000 Series cord reels are to be installed in conjunction with the cabinet, omit steps 6, 7, 9, and 11 of the following procedure. Before beginning, inspect packed materials for shipping damage and completeness. Report any discrepancies immediately.

CAUTION: Unless reel was specified differently when ordering, maximum installation height is 16 feet. Do not exceed this distance. Prior to performing electrical maintenance (such as removing and replacing the work device to facilitate routing of the cord through the guide roller assembly), ensure that all power has been removed from reel. Consult manual of instructions accompanying reel for details.

1. Assemble beam clamp assembly by inserting spring nuts (6) into channel support (8). Position beam clamps (5) and secure into place with 1/2" bolts (4). Repeat this step for each beam clamp assembly before proceeding to next step.
2. Position beam clamp assembly to upper mounting channel (1). Secure into place with 1/2" bolts (7), spacers (9), and locknuts (16). Repeat step for each beam clamp assembly before proceeding to next step.
3. Position upper mounting channel (1) to "I" beam. Push beam clamps (5) inward until they fully engage "I" beam flange. Tighten 1/2" bolts (4) to secure.

4. Position vertical channel (11) to upper mounting channel (1) and secure into place with four 5/16" bolts (10) and locknuts (10). Repeat step for opposite end of bank.

NOTE: 4 bank models employ a vertical channel in the center.

5. Position lower channel (15) to vertical channels (11) and secure into place with 5/16" locknuts (14).
6. Apply pipe thread sealant to elbow swivel union (17). Thread elbow swivel union into inlet main shaft (19) of reel. Repeat step for each reel before proceeding to next step.
7. Thread connecting hose fitting (25) into elbow swivel union (17). Tighten securely. Repeat step for each reel before proceeding to next step.

NOTE: If 4000 or 5000 Series reels are being installed, special adapter 600230 must be installed to reel before proceeding to next step. Perform special adapter installation in accordance with diagram.

8. Position reel (26) to upper mounting channel (1). Secure into place with 3/8" bolts and locknuts (27). Route 2" connecting hose (2) (or power cord in the case of 4000 cord reels) through upper mounting channel (1) via 1-14" cutout (3). Repeat step for each reel before proceeding to next step.
9. Adjust spring tension of reel by pulling hose from reel sheave until sheave has turned three complete turns and then latch reel in position. While reel is still latched, manually rewrap hose on reel. Do not release latch until step 10 of this procedure has been completed. Repeat step for each reel before proceeding to next step.

*See note below.

NOTE: In the following step, if a 4000 cord reel is being installed, the output device and bumper must be removed to facilitate routing of the cord through the guide roller assembly. Consult manual that accompanies each reel for removing these items. *See note.

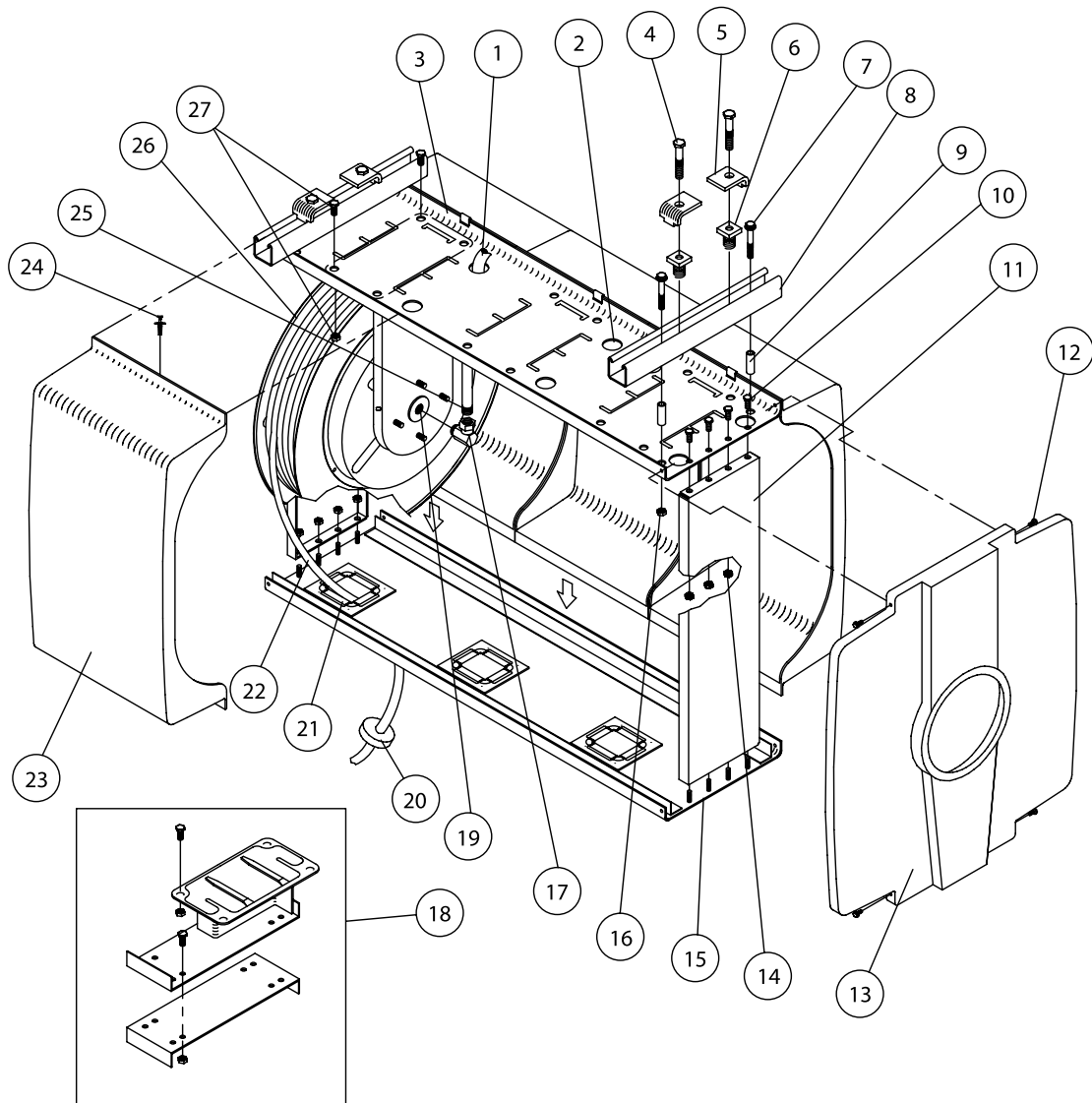
10. Route reel output hose (22) (or cord in the case of 4000 cord reels) through guide roller assembly (21) in lower channel (15). When desired length protrudes from lower channel, install bumper (20) (do not install output control device at this time). Repeat step for each reel in bank before proceeding to next step.

NOTE: For servicing, it is recommended that a shut-off device be installed between the reel and supply.

11. Flush piping system of contaminants. Connect supply side plumbing, then pressurize system. Check system for leaks. Shut off ball valves and relieve pressure. Repeat step for each reel in bank before proceeding to next step.
12. Install output control device.
13. Position wrapper (23) to assembly and secure into place with clip (24). Repeat step for each wrapper before proceeding to next step.
14. Position end panel (13) to assembly and secure into place using four 8-32 self-tapping screws (12). Repeat step for opposite end of bank.

* If needed, adjust spring tension of reel by adding or removing wrap of hose from the spool, one wrap at a time, until desired tension is obtained. Add wraps to increase tension. Remove wraps to decrease tension.

Form# 1181-1205 Rev: 8/2014



Item #	Part #	# Req.	Description	Item #	Part #	# Req.	Description
1	262017	1	Upper Channel (1 bank)	13	260471	2	End Panel
1	262018	1	Upper Channel (2 bank)	14	S85-7	16	5/16-18 Nyloc Nut
4	S2-87	4	1/2-13 x 1 1/2" Hex Cap Screw	15	600369	1	Lower Channel (1 bank)
5	260477	4	Beam Clamp	15	600176	1	Lower Channel (2 bank)
6	260478	4	Spring Clamp Nut	16	S281-8	4	1/2-13 Hex Nut
7	S2-88	4	1/2-13 x 1 3/4" Hex Cap Screw	18	600230	2 (1 bank)	Adapter
8	260476	2	Support Channel	23	260473	2 (1 bank)	Wrapper
10	S2-52	8	5/16-18 x 5/8" Hex Cap Screw	23	260473	4 (2 bank)	Wrapper
11	260549	2	Vertical Channel	24	S282-88	4 (1 bank)	Self-Tapping Screw
12	S282-88	8	Self-Tapping Screw	24	S282-88	8 (2 bank)	Self-Tapping Screw