

Operating Instructions

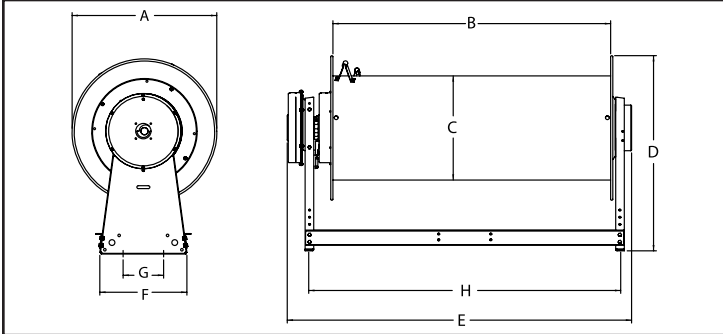
Spring Driven Exhaust Hose Reels

8" Outlet Hose Model Numbers:

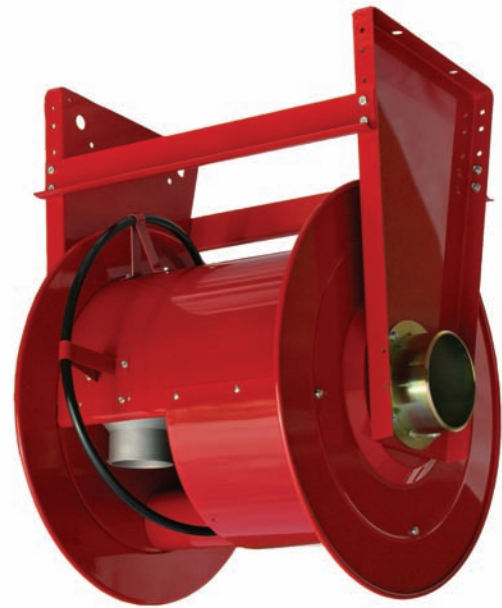
V832-00-01-00 V832-04-01-00 V848-04-01-00

Dimensions

	A	B	C	D	E	F	G	H
V832-00-01-00	25"	32"	18"	33 3/4"	40 1/2"	15"	7"	37 5/8"
V832-04-01-00	25"	32"	18"	33 3/4"	43 1/2"	15"	7"	37 5/8"
V848-04-01-00	25"	48"	18"	33 3/4"	59 1/2"	15"	7"	53 5/8"



Four 9/16" diameter x 3/4" mounting slots



Safety

Personal injury and/or equipment damage may result if proper safety precautions are not observed.

- Ensure that reel is properly installed before connecting input and output hoses.
- Ensure that working pressure and temperature do not exceed rating of reel.
- Be aware of machinery and personnel in work area.
- If a leak occurs in the hose or reel, remove from service immediately.
- A high tension spring assembly is contained within the reel. Exercise extreme caution.
- If reel ceases to unwind or rewind, remove from service immediately. Do not pull or jerk on hose!
- Other than replacing the hoses, refer all other repairs only to an authorized service person or directly to Reelcraft. Failure to do so may void the warranty.

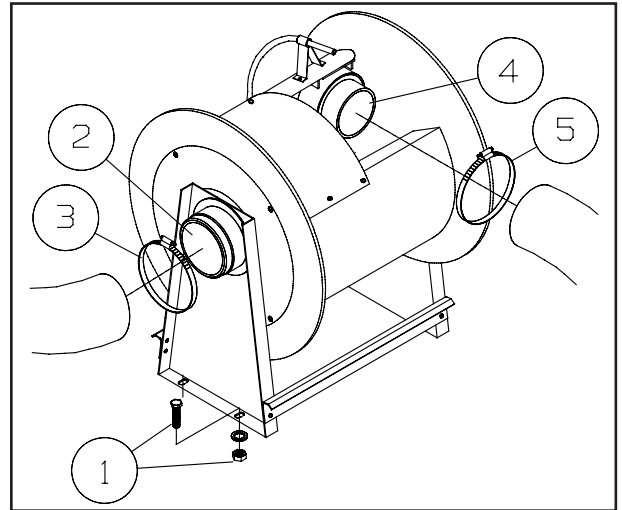
Mounting

1. Position reel on floor, wall, or ceiling. Secure into place using four (customer supplied) bolts (1).

Connecting the Hoses

1. Turn reel until spring is tight. Back off three turns, then latch.
2. Position input hose to input adapter (2). Secure into place with hose clamp (3).
3. Position output hose to output adapter (4). Secure into place with hose clamp (5).
4. Release latch and wind hose onto reel.

Installation Instructions



Adjustments

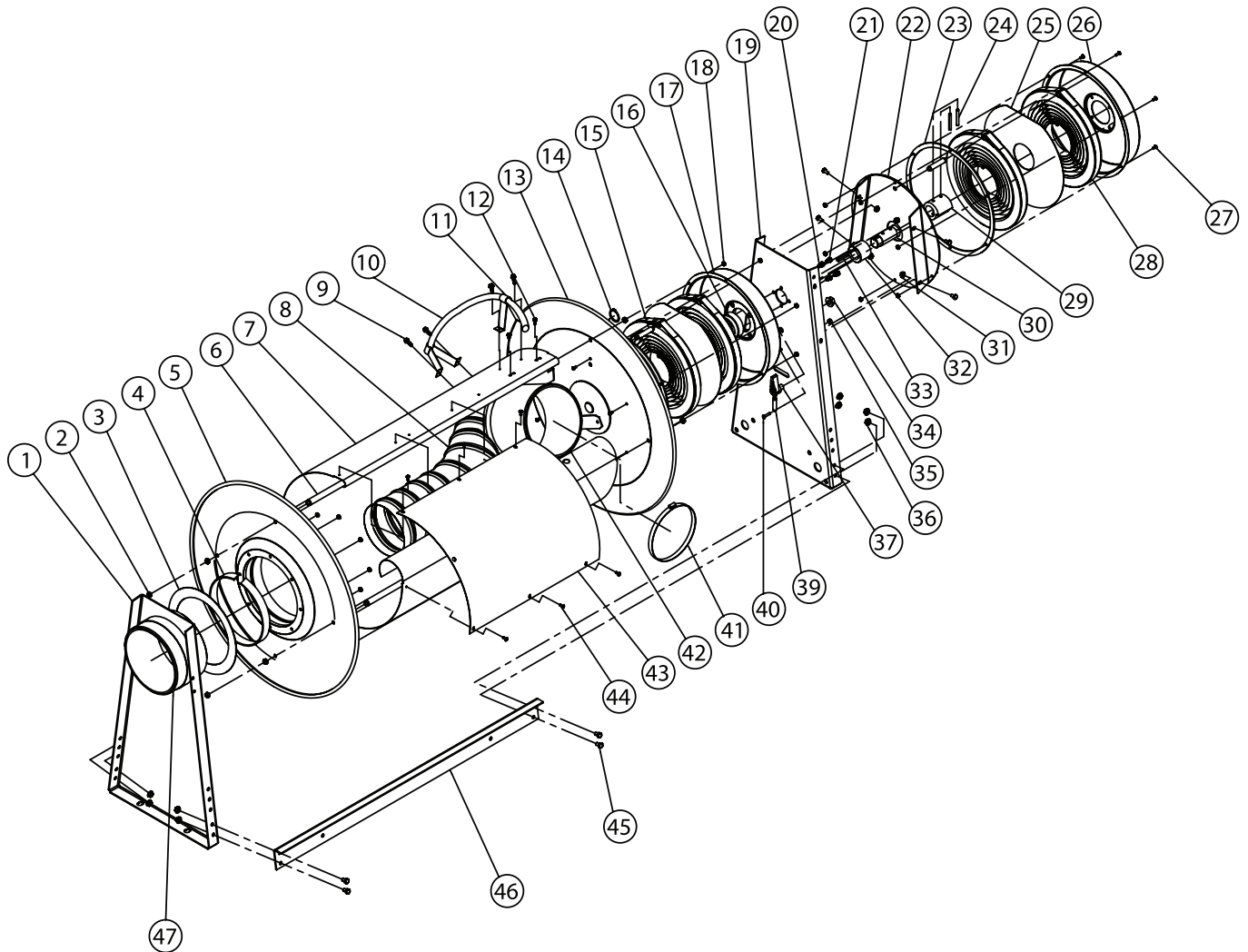
WARNING: Use extreme caution; reel under tension. Avoid releasing latch mechanism.

If necessary, adjust spring tension on reel by adding or removing wraps of hose from spool, one wrap at a time, until desired tension is obtained. Add wraps to increase tension. Remove wraps to decrease tension.

CAUTION: When adding wraps of hose, be careful not to exceed the winding mechanism's spring capacity. Add just enough wraps of hose to achieve the desired tension. Damage to the winding mechanism will result if spring is over-tensioned.

Form# 1207-110 Rev: 3/2017

Spring Driven Exhaust Hose Reels



ITEM	PART #	QTY	DESCRIPTION
1	602068	1	Side Frame Assembly
2	S85-7	8	Nut, 5/16-18
3	262034	1	Washer
4	262304	1	Wear Washer
5	602252	1	Flange Assembly
8	262286	1	Connecting Tube
9	S282-88	4	Hex Head Screw, 1/4 X 3/4"
10	260177-34	1	Tube Guide
11	260178	2	Guide Supports
12	S294-27	7	Screw 10-16 X 5/8" LG
13	600986	1	Flange Assembly
14	300007	1	Snap Ring
16	600984	1	Arbor Assembly
17	600044	1	Spring Case Assembly
19	261976	1	Side Frame
20	902016	4	Lock Washer 1/4" Medium
36	300107	8	Nut, 5/16-18
41	262286	4	Hose Clamps
42	602075-35	1	Reducer Assembly
45	S2-51	8	Screw 5/16-18 X 1/2" LG
47	262292	1	8" Adapter
	602764	1	Bumper Stop

ITEM	DESCRIPTION	V832-00-01-00	REQ'D	V832-04-01-00	REQ'D	V848-04-01-00	REQ'D
6	Tie Rod	260402-800	4	260402-800	4	260402-150	4
7	Seave Spacer	260772-L	1	260772-L	1	262363	1
15	Spring Case Stud	None	N/A	260174	2	260174	2
18	Nut, 10-32 Double Serrated	300011	14	300011	20	300011	20
21	Hex Cap Screw, 1/4-20 X 1/2" LG	S56-41	4	S56-41	8	S56-41	8
22	Auxiliray Spring Case Cover	None	N/A	602397	1	602397	1
23	Spring Case Gasket	260069	1	260069	2	260069	2
24	Spring Pin	None	N/A	912328-2	2	912328-2	2
25	Spring Spacer	None	N/A	260165	2	260165	2
26	Spring Case	260169	1	260169	2	260169	2
27	Machine Screw, 10-32 X 1/2"	300002	6	300002	12	300002	12
28	Drive Spring Assembly	None	N/A	600045	4	600045	4
29	Arbor Spring	None	N/A	262288	1	262288	1
30	Arbor Shaft	None	N/A	262289	1	262289	1
31	Nut, 1/4-20	None	N/A	S281-4	4	S281-4	4
32	Collar	None	N/A	262290	1	262290	1
33	Key, 1/4" X 1/4" X 1" LG	None	N/A	390163-1	1	390163-1	1
34	Nut, 1/2-20	None	N/A	S280-8	1	S280-8	1
35	Nut, 10-32 X 7/8"	None	N/A	S82-15	1	S82-15	1
37	Latch Pawl	None	N/A	600018	1	600018	1
39	Latch Spring	None	N/A	260067	1	260067	1
40	10-32 Shoulder Screw	None	N/A	S393-2	1	S393-2	1
43	Hose Support	260748	1	260748	1	262362	1
44	Self Tapping Screw, 10-3/8	S285-24	6	S285-24	6	S285-24	10
46	Cross Brace	262387-5	2	262387-5	2	262387-7	2