

Operating Instructions

Series M80000 Spring Driven Hose Reels

M82000 OMP118

M83000 OMP118

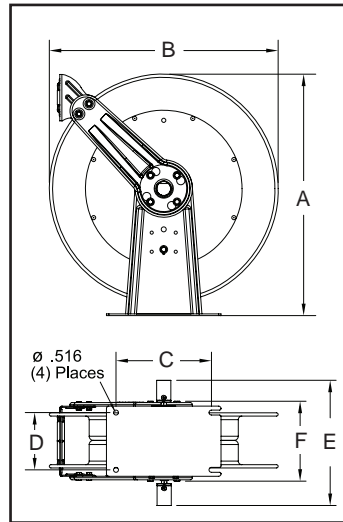
M81000 OHP118



IMPORTANT

Read this manual carefully before installing, operating or servicing this equipment.

Dimensional Data



A	25.375"
B	24"
C	10"
D	6"
E	10.5"
F	8.375"

Personal Safety

Personal injury and/or equipment damage may result if proper safety precautions are not observed.

- Ensure that reel is properly installed before connecting input and output hoses.
- Bleed fluid/gas pressure from system before servicing reel.
- Before connecting reel to supply line, ensure that pressure does not exceed maximum working pressure rating of reel.
- Remember, even low pressure is very dangerous and can cause personal injury or death.
- Be aware of machinery and personnel in work area.
- If a leak occurs in the hose or reel, remove system pressure immediately.
- A high tension spring assembly is contained within the reel. Exercise extreme caution.
- Pull hose from reel by grasping the hose itself, not the control valve.
- If reel ceases to unwind or rewind, remove system pressure immediately. Do not pull or jerk on hose!
- Treat and respect the hose reel as any other piece of machinery, observing all common safety practices.

Form# 1224-816 Rev: 1/2016

INSTALLATION INSTRUCTIONS

WARNING: Ensure that reel, hose, and equipment are properly grounded. Use an ohmmeter to check ground continuity.

Mounting

CAUTION: Unless reel was specified differently when ordering, maximum installation height is 16 feet. Do not exceed this distance.

1. Unpack and inspect reel for damage. Turn by hand to check for smooth operation. Check for completeness.
2. Configure reel for top, side or bottom hose dispensing by removing the bolts (2) from one side of the guide roller bracket and loosening the four guide arm bolts (3) on each side of the hose reel. Rotate and remove each guide arm then reinstall in the desired configuration. If bottom wind is desired, bolts (13) and bolts (2) must be removed and replaced after the guide arm is in position.

CAUTION: When changing guide arm positions, the U-bolt must be placed in the proper location as instructed in figure A. The reel can "latch out" during use if this instruction is not adhered to.

3. Position reel on floor, wall, or ceiling. Secure into place using four (customer supplied) bolts.

Installing the Input Hose

WARNING: Ensure that supply line pressure does not exceed maximum working pressure rating of reel. Apply pipe thread sealant to all threads on standard reels. Do not overtighten connection. Recommended torque not to exceed 70 ft. lb.

CAUTION: Use flexible hose connection at input. Do not use rigid plumbing.

1. Apply thread sealant as directed and connect swivel (12) to main shaft input (5).
2. For standard shaft and swivel reels, connect customer supplied inlet hose (4) to swivel input as indicated in illustration.

Installing the Output Hose

WARNING: Use extreme caution; reel under tension. Avoid releasing latch mechanism.

CAUTION: Apply pipe thread sealant to all threads on standard reels. Do not overtighten connection. Recommended torque not to exceed 70 ft. lb.

1. Manually turn sheave (6) until spring is tight, back off 3 turns, then latch.
2. Route output hose (7) through roller bracket (1), U-bolts (8), then through cutout (9) in spool as indicated in illustration.
3. Connect output hose (7) to gooseneck (10) as indicated in illustration.

4. Verify U-bolt position conforms with guide arm position using label inside spool. Then tighten nuts (11) on U-bolt (8).
5. Charge hose. Momentarily open control valve to purge hose of gases. When fluid appears at control valve, close valve. With hose fully charged, release latch and wind output hose onto reel.
6. Install bumper stop assembly.

ADJUSTMENTS

WARNING: Use extreme caution; reel under tension. Avoid releasing latch mechanism.

If necessary, adjust spring tension on reel by manually adding or removing wraps of hose from spool, one wrap at a time, until desired tension is obtained. Manually add wraps to increase tension. Remove wraps to decrease tension.

WARNING: Rewind hose on reel, then bleed pressure from system before performing the following procedures.

CAUTION: Remove all spring tension before disassembling the hose reel. Do not attempt to open the riveted spring case assembly.

1. Replace hoses in accordance with procedures given in "Installation Instructions" section of this manual.
2. All mating moving parts have been factory lubricated as required.

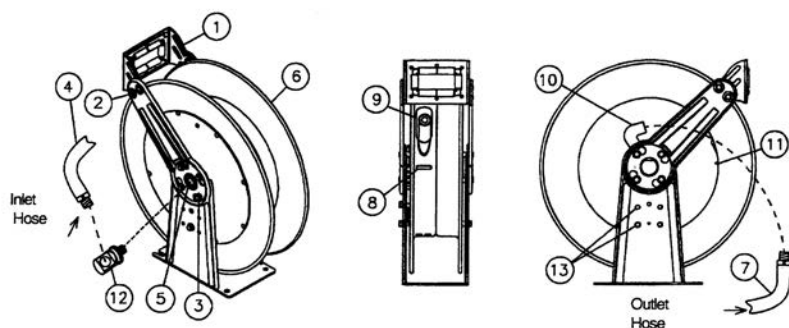
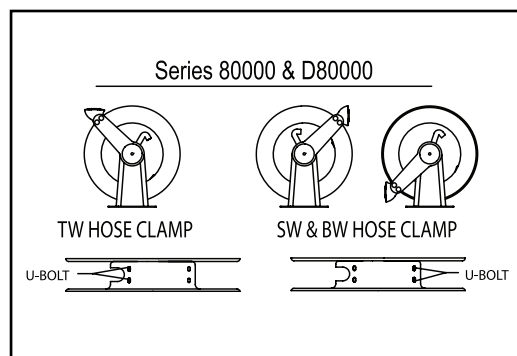
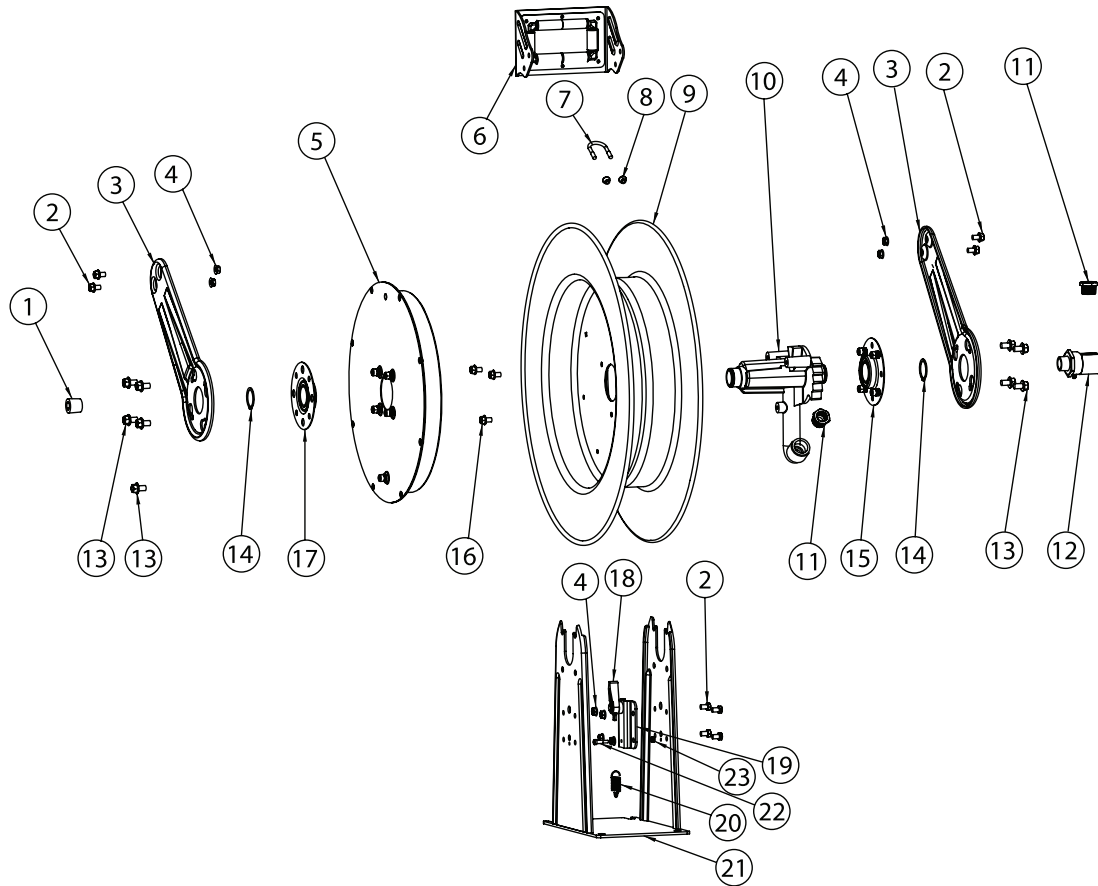


Figure A





ITEM	DESCRIPTION	QTY.	M82000 OMP118	M83000 OMP118	M81000 OHP118
1	Pipe Plug	1	*	*	*
2	5/16-18 x 1/2" Screw	9	602487	602487	602487
3	Guide Arm	2	261299	261299	261299
4	5/16-18 Lock Nut	8	*	*	*
5	Spring & Case Assembly	1	600653-2-35	600653-1-35	600645-2-35
6	Roller Bracket Assembly	1	S600642	S600642	S600642
7	U-bolt	1	3-117440	5-117440	3-117440
8	1/4-20 Lock Nut	2	261650-1	261650-1	261650-1
9	Sheave Assembly	1	600649-35	600649-35	600649-35
10	Ratchet, Flow Casting	1	261306-4	261306-4	600667-5
11	Adapter	2	S382-19	None	None
12	Swivel Assembly	1	602487	602487	602487
13	3/8-16 x 5/8" Screw	9	*	*	*
14	1 3/8" Snap Ring	2	*	*	*
15	Flange W/Bearing & Nut-Sert Assembly	1	S600651	S600651	S600651
16	Machine Screw 5/16-18 x 1/2	7	S44-10	S44-10	S44-10
17	Bearing & Flange Assembly	1	S600644	S600644	S600644
18	Latch Pawl Assembly	1	S600018	S600018	S600675
19	Latch Mounting Bracket	1	261303	261303	None
20	Latch Spring	1	S260067	S260067	S260067
21	Base & Upright Assembly	1	600641	600641	600641
22	Shoulder Screw	1	S393-2	S393-2	S393-2
23	Nyloc Nut	1	S82-15	S82-15	S82-15
Latch Pawl & Mounting Bracket Assembly - Items 18/19/20/22/23		1	S600643	S600643	None

***Included in hardware kit part number 602504**