

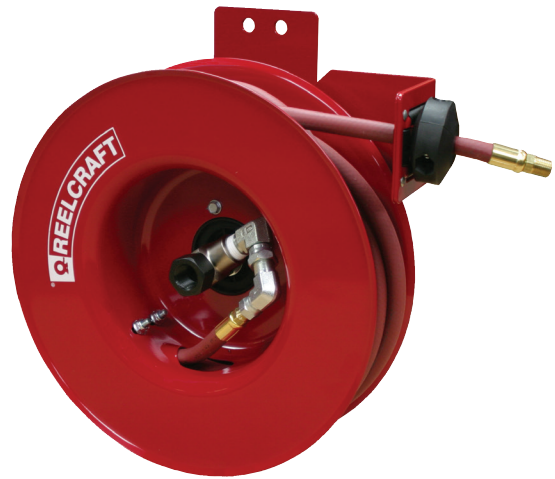
# Operating Instructions

## Series 5000 Spring Driven Hose Reels

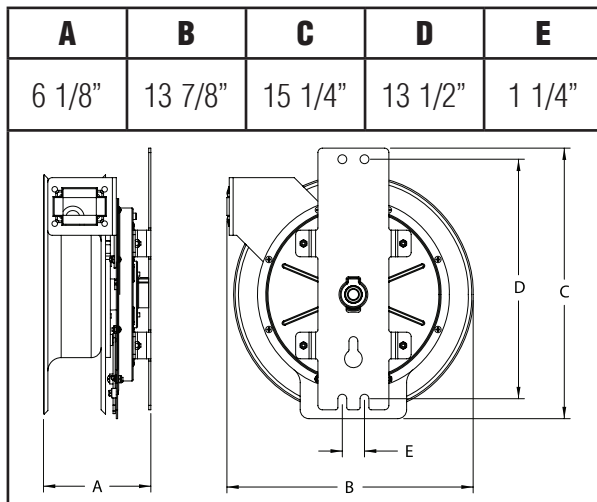
Side Mount Model Numbers:

5450 OLPSMR 5635 OLPSMR A5825 OLPSMR

5450 OLPSML 5635 OLPSML A5825 OLPSML



### Dimensions



### SAFETY

1. Do not use reel at higher pressures or temperatures than listed on the back of this bulletin.
2. Remove all spring tension before beginning disassembly process.

### INSTALLATION:

A flexible hose connection must be used between the hose reel inlet and the source of supply to prevent possible misalignment and binding.

### MOUNTING:

The hose reel is equipped with a universal mounting bracket so that it can be mounted on the floor, wall or ceiling; whichever place is convenient. The hose guide arm can be moved to the position desired by removing the screws fastening the guide bracket to the reel base. Shift the guide arm bracket so the hose comes off the reel at the desired position and replace the screws.

### LUBRICATION:

Hose reel spring and bearings are factory lubricated and require no further lubrication.

### REPLACING HOSE:

1. Wind spool flange clockwise-facing swivel-until spring is tight.
2. Back off three turns and latch.
3. Insert hose through roller guide.
4. Connect hose fitting to swivel joint and secure hose with clamps.

### ADJUSTMENTS:

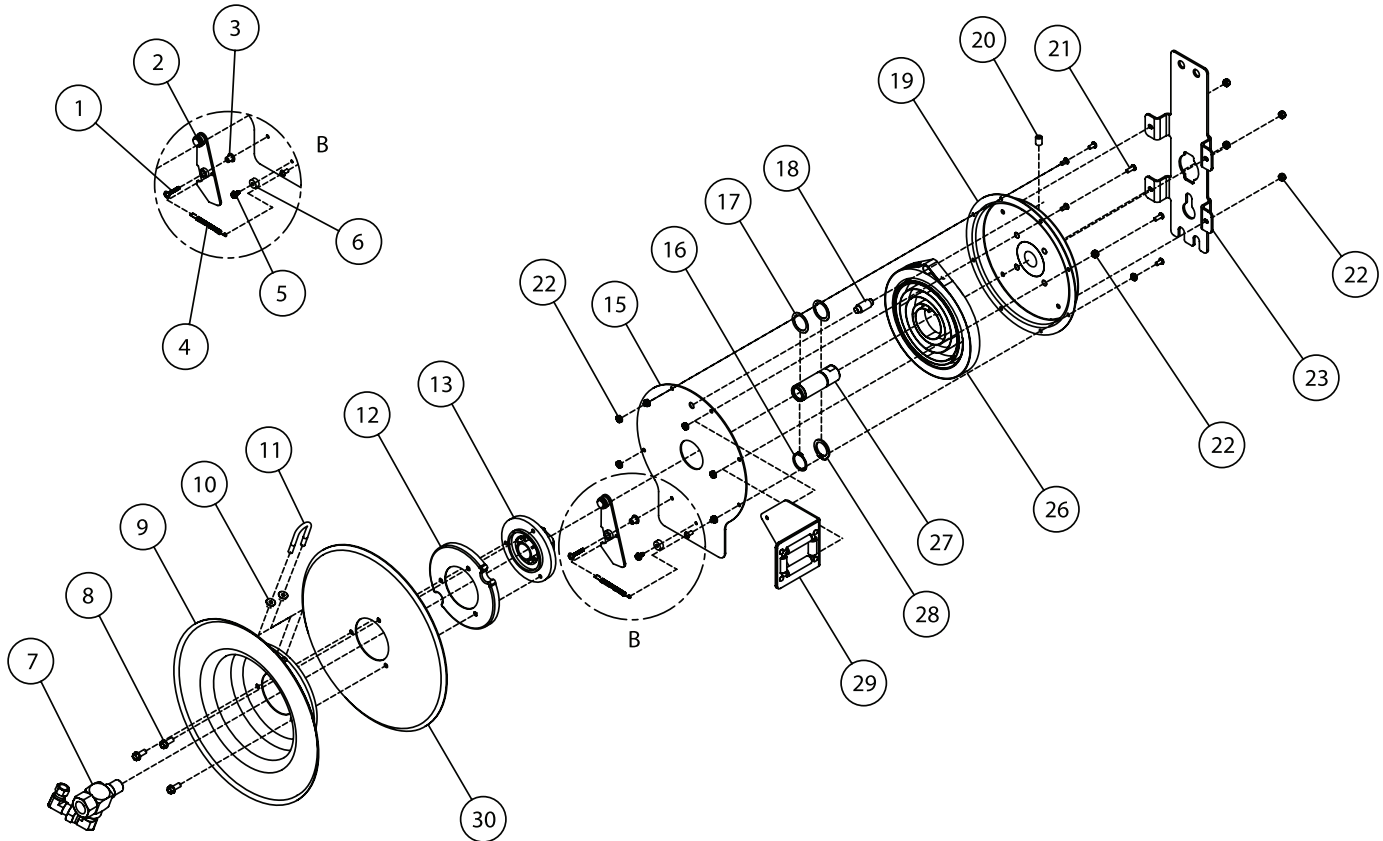
To adjust spring tension, add or remove wraps of hose from the spool, one wrap at a time until desired tension is obtained.

### REPAIRS:

Extensive repairs should be performed only by an authorized serviceman or factory to avoid damage which may void your warranty. Remove all spring tension before beginning disassembly process.

Form# 1231-1011 Rev. 3/2018

# Series 5000 Spring Driven Hose Reels



Item #	Part #	# Req.	Description	Item #	Part #	# Req.	Description	Item #	Part #	# Req.	Description
1	300035	1	Machine Screw	11	3-117440	1	U-Bolt	21	300002	7	Machine Screw
2	S400109	1	Latch Plate Assembly	12	S500019	1	Latch Cam	22	S82-15	17	Lock Nut
3	S400012	1	Latch Bushing	13	S260648	1	Spring Arbor	23	262488	1	Side Mount Plate
4	S400018	1	Latch Plate Screw	15	262494	1	Spring Case Cover	27	S400015	1	Main Shaft
5	S32-136	1	Self Tapping Screw	16	300031	1	Snap Ring	28	S137-12	1	Snap Ring
6	S400021	1	Latch Plate Bumper	17	300034	2	Wear Washer	29	S500107	1	Guide Arm
8	S295-102	3	Self Tapping Screw	18	S261360	1	Spring Case Stud	30	500006	1	Sheave Disc
9	260022	1	Sheave Flange	19	602435	1	Spring Case Assembly				
10	261650-1	2	Lock Nut	20	300006	1	Set Screw				

Item #	Description	# Req.	5450 OLPSMR	5450 OLPSML	5635 OLPSMR	5635 OLPSML	A5825 OLPSMR	A5825 OLPSML
7	Swivel Assembly	1	602330	602330	602330	602330	602444	602444
26	Drive Spring Assembly	1	S503755	S503755	S504240	S504240	S505740	S505740
	Hose Assembly	1	601001-50	601001-50	601013-35	601013-35	601020-25	601020-25
	Bumper Stop Assembly	1	1-HR1004-A	1-HR1004-A	1-HR1004	1-HR1004	2-HR1004-3	2-HR1004-3
	Max. Operating Pressure		300 PSI	300 PSI	300 PSI	300 PSI	300 PSI	300 PSI
	Max. Operating Temperature		150 °F	150 °F	150 °F	150 °F	150 °F	150 °F