

Operating Instructions

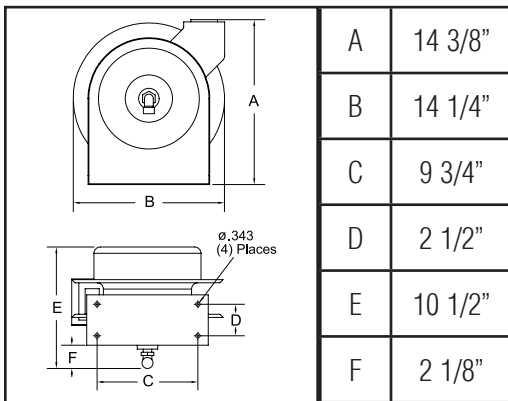
Series LS 5000 Stainless Steel Cord Reels

Model Numbers:

LS 5445 123 3	LS 5425 123 3M	LS 5445 123 9G
LS 5445 123 3A	LS 5445 123 7	LS 5400
LS 5425 123 3M-WC	LS 5445 123 7A	LS 5425 123 X
LS 5445 123 3M-WC	LS 5445 123 7B	LS 5445 123 X
LS 5415 123 3M	LS 5445 123 9	



Dimensions



Electrical Information

Voltage	AMPS	Frequency
125	15	60 HZ Single Phase
125	20	60 HZ Single Phase

IMPORTANT

Read this manual carefully before installing, operating or servicing this equipment.

SAFETY

Personal injury and/or equipment damage may result if proper safety precautions are not observed.

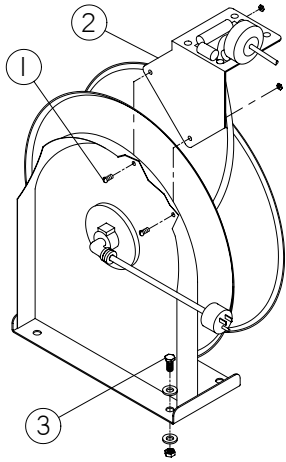
- Ensure that only a qualified electrician installs/services this equipment.
- Ensure that power supply voltage does not exceed maximum voltage rating of reel.
- Ensure that all electrical power is removed from reel before servicing.
- A high-tension spring assembly is contained within the reel. Exercise extreme caution.
- Check for frayed and/or broken wires before each use. Pull electrical cord from reel by grasping the electrical cord itself, not the work device.
- If an electrical malfunction should occur, remove power from reel immediately.
- Ensure that reel, electrical cord, and equipment being serviced are properly grounded. Use an ohmmeter to check ground continuity.
- If reel ceases to unwind or rewind, remove power immediately. Do not pull or jerk on electrical cord!
- Treat and respect the reel as any other piece of machinery, observing all common safety practices.
- All cord reels with flying leads must be hard wired into the electrical circuit to ensure proper function.

WARNING: Even low voltage can cause irreparable damage or death! Exercise extreme caution while operating or servicing this equipment.

Form# 1306-418 Rev: 5/2018

Installation Instructions

Mounting



CAUTION:

Unless reel was specified differently when ordering, maximum installation height is 16 feet. Do not exceed this distance. Ensure that only a qualified electrician installs/ services this equipment. Observe applicable NEC, OSHA, and local codes when installing this equipment. Installation of GFCI cord reels should be performed by a qualified and licensed professional in accordance with local building codes and applicable NEC standards.

1. Unpack and inspect the reel for damage. Turn by hand to check for smooth operation. Check for completeness.
2. Configure reel for top, side or bottom-wind (bottom-wind for constant tension reels only) electrical cable dispensing by removing bolts (1) securing guide arm bracket (2).
3. Determine new guide arm bracket location and remove corresponding bolts. Position guide arm bracket to reel and replace bolts.
4. Position reel on floor, wall or ceiling. Secure into place using four (customer supplied) screws or bolts (3).

Adjusting the Spring Tension

If necessary, adjust spring tension on reel by adding or removing wraps of electrical cord from spool, one wrap at a time, until desired tension is obtained. Add wraps to increase tension. Remove wraps to decrease tension.

WARNING:

When adding wraps of electrical cord, be careful not to exceed the winding mechanism's spring capacity. Add just enough wraps of cord to achieve the desired tension. Damage to the winding mechanism will result if spring is over-tightened. Always be aware of spring tension on reel. Exercise extreme caution.

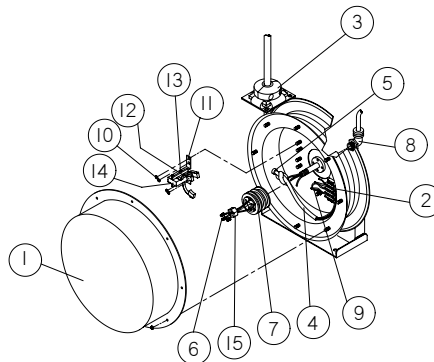
Troubleshooting Instructions:

20 AMP Models

Troubleshooting of the reel consists of isolating a problem to a defective electrical cord/work device, brush holder/brushes, or collector assembly. Refer any other discrepancies only to an authorized service person or directly to Reelcraft.

WARNING:

The following procedure directs the technician to take voltage measurements. Remember, even low voltage is dangerous and can cause personal injury or death. Exercise extreme caution! Ensure that only a qualified electrician installs or services this equipment.



1. If work device is either an incandescent or fluorescent light, replace bulb with a known good bulb. If this does not correct the problem, proceed to step 2. If work device is an electrical receptacle, ensure that tool or fixture connected to it is in good working order. If it is, proceed to step 2.
2. Remove power from reel.
3. Remove access cover (1).
4. Reapply power to reel.
5. Check for correct voltage (120 vac) at a terminal strip (2). If voltage reading is correct, replace output electrical device (refer to Service Instructions). If voltage reading is incorrect, proceed to step 6.
6. Remove power from reel.

7. Using ohmmeter, check continuity of input electrical cord. If cord checks good, proceed to step 8. If cord is faulty, replace it (refer to Service Instructions). Remove brush holder/brushes from reel and inspect (refer to Service Instructions). Replace defective components then proceed to step 9.
8. Reapply power to reel.
9. Check for correct voltage (120 vac) at terminal strip (2).
10. If voltage reading is still incorrect, replace defective collector assembly (refer to Service Instructions).
11. Replace access cover (1).

Service Instructions:

20 AMP Models

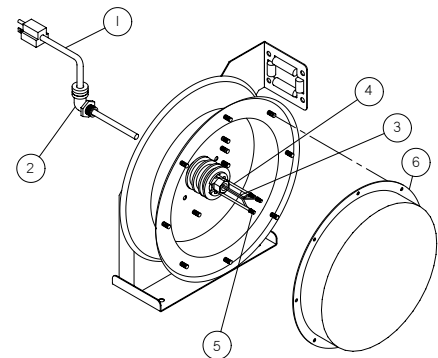
Maintain reel by following the service instructions given below. Refer all other repairs, other than those listed, only to an authorized service person or directly to Reelcraft. Failure to do so can result in personal injury and/or equipment damage and may void the warranty.

Installing the Input Electrical Cable:

20 AMP Models

WARNING:

Use only 12/3 cable for input wiring. Ensure that application does not exceed electrical rating of reel (see page 1 of this manual).



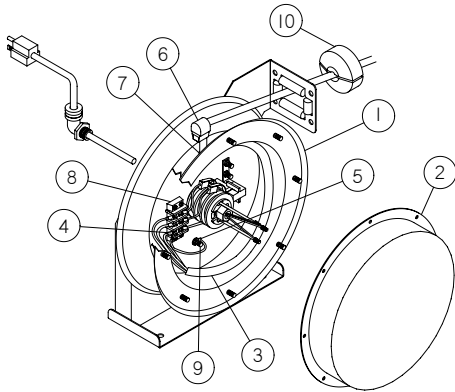
1. Feed input cable (1) through elbow (2) and main shaft.
2. Screw elbow (2) onto reel.
3. Connect input wires (3) and collector ring wires (4) together using wire nuts (5).
4. Take the provided zip tie (not pictured) and zip tie the input cable wires together closest to the slip ring.
5. Assemble cover (6) to reel.

Installing the Output Electrical

Cable: 20 AMP Models

WARNING:

Select output cable in accordance with power requirement of apparatus to be supplied. Ensure that application does not exceed electrical rating of reel (see page 1 of this manual). Use extreme caution, reel under tension. Avoid releasing latch mechanism.

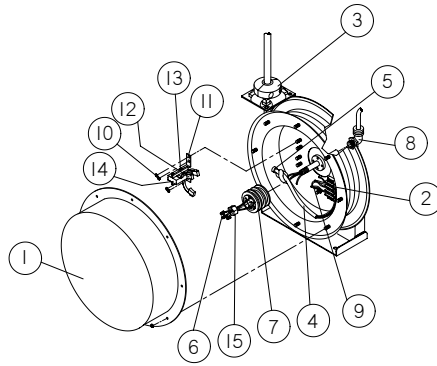


1. Manually turn sheave (1) until spring is tight, back off 2 turns and latch.
2. Remove access cover (2).
3. Remove 6" of output cable outer jacket (3) and add fork terminals (4) to ends.
4. Route cable through strain relief (6), then through cut out in spool (7).
5. Pull enough cable through hole for roughly a 1/2 an inner wrap shown.
6. Connect output wires to terminal block (8) as shown.
7. Connect ground wire to grounding stud (9) as shown.
8. Using an ohmmeter check for ground faults.
9. Take the provided cable clamp (not pictured) and attach it to the wire. Then take the cable clamp and screw it down to the right-most screw on the brush assembly (with the brush assembly facing upward).
10. Replace cover (2).
11. Replace latch and wind cable onto reel.
12. Install bumper stop (10).

Replacing the Output Electrical Cord/Work Device

WARNING:

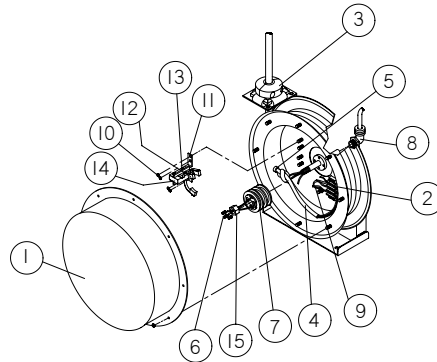
Remove power from reel before performing any of the following procedures. Use extreme caution, reel under tension. Avoid releasing latch mechanism.



1. Pull output electrical cord from reel until fully extended, then latch.
2. Remove output bumper stop (3).
3. Remove access cover (1).
4. Disconnect output electrical cord/work device (4) at terminal strip (2).
5. Remove cable clamp.
6. Remove strain relief (5). Remove output electrical cord/work device.
7. Install replacement electrical cord/work device by reversing steps 2 through 5.
8. Release latch and rewind electrical cord on reel.
9. Replace access cover (1) and bumper stop (3).

Replacing the Input Electrical Cord

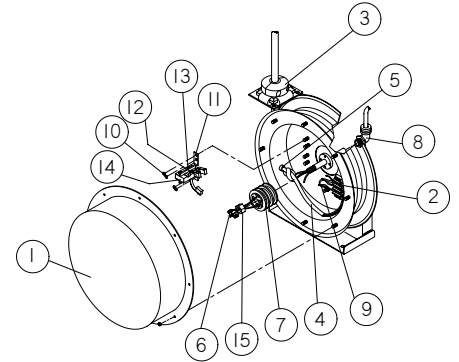
WARNING: All cord reels with GFCI receptacles must be hard wired into the electrical circuits. Use of 2 or 3 prong plugs may cause a potential malfunction of the GFCI receptacle.



1. Remove access cover (1).
2. Remove wire nuts (6) securing input electrical cord to collector assembly (7).
3. Remove zip tie (not pictured), being careful not to damage wires.
4. Remove 90 degree elbow (8).
5. Remove input electrical cord.
6. Remove 11" of outer jacket from replacement input electrical cord (input electrical cord wires must protrude a minimum of

- 6" from center of collector assembly).
7. Install replacement input electrical cord by reversing steps 1 through 4.
8. Replace access cover (1).

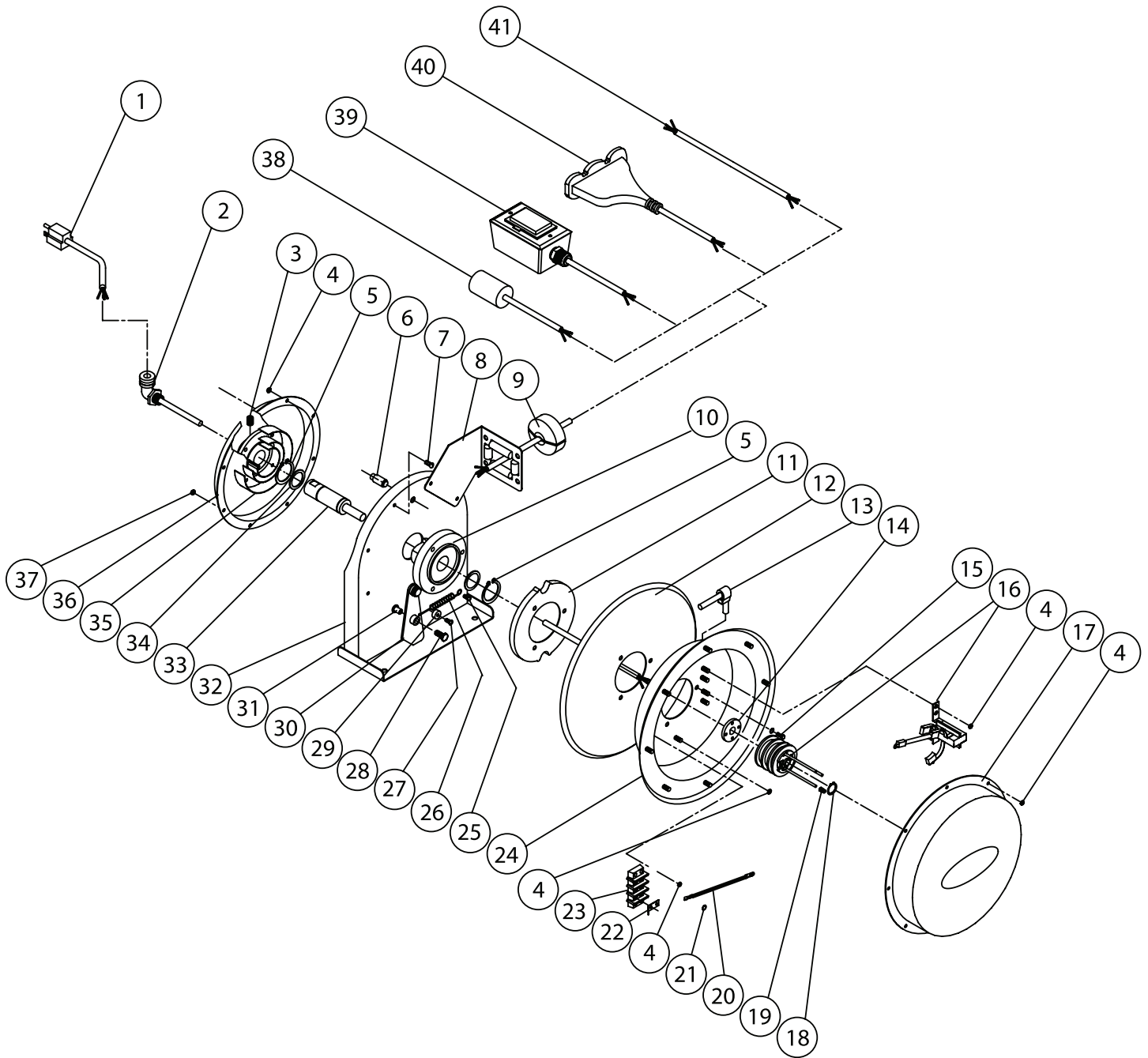
Replacing the Brush Holder/Brushes



1. At terminal strip (2), remove wires connecting brushes (9) to terminal strip.
2. Remove lock nuts (10) securing brush holder (11) to reel. Relocate cable clamp temporarily and remove brush holder.
3. Remove brushes (12) from holder (11).
4. Install replacement brush holder/brushes by reversing steps 1 through 3. Upon completion of installation, adjust brush-to-ring alignment by loosening nuts (13) and sliding finger assembly (14).

Replacing the Collector Assembly

1. Remove access cover (1).
2. Remove wire nuts (6) securing input electrical cord to collector assembly.
3. Remove zip tie (not pictured), being careful not to damage wires.
4. At terminal strip (2), disconnect wires (9) connecting brushes (12) to terminal strip.
5. Remove lock nuts (10) securing brush holder (11) to reel. Relocate cable clamp temporarily and remove brush holder.
6. Remove coupling nut (15).
7. Remove collector assembly.
8. Install replacement collector assembly by reversing steps 1 through 5. Upon completion of installation, adjust brush-to-ring alignment by loosening nuts (13) and sliding finger assembly (14).
9. Replace access cover (1).



Series LS 5000 Stainless Steel Cord Reels

Item #	Description	# Req.	LS 5445 123 3	LS 5445 123 3A	LS 5425 123 3M-WC	LS 5445 123 3M-WC	LS 5415 123 3M	LS 5425 123 3M	LS 5445 123 3M	LS 5445 123 7
1	Inlet Cord Assembly	1	260630	602002	602793	602793	602237	602237	602237	260630
2	Connector, 90° Cord	1	261140-C	261140-C	261140-C	261140-C	261140-C	261140-C	261140-C	261140-C
3	Set Screw 3/8-19 x 1/2" Pin	1	S47-64	S47-64	S47-64	S47-64	S47-64	S47-64	S47-64	S47-64
4	Lock Nut 10-32 Hex	22	S348-15	S348-15	S348-15	S348-15	S348-15	S348-15	S348-15	S348-15
5	Snap Ring	2	S147-25	S147-25	S147-25	S147-25	S147-25	S147-25	S147-25	S147-25
6	Spring Case Stud	1	261361	261361	261361	261361	261361	261361	261361	261361
7	Screw, 10-32 x 1/2"	2	S46-107	S46-107	S46-107	S46-107	S46-107	S46-107	S46-107	S46-107
8	Guide Arm Assembly	1	600057	600057	600057	600057	600057	600057	600057	600057
9	Bumper Assembly	1	1-HS1004-A	1-HS1004-A	1-HS1004-A	1-HS1004-A	1-HS1004-A	1-HS1004-A	1-HS1004-A	1-HS1004-A
10	Spring Arbor	1	S400017	S400017	S400017	S400017	S400017	S400017	S400017	S400017
11	Latch Cam	1	260224	260224	260224	260224	260224	260224	260224	260224
12	Sheave Disc	1	260223	260223	260223	260223	260223	260223	260223	260223
13	Strain Relief	1	260633	260633	260633	260633	260633	260633	260633	260633
14	Plate Adapter	1	261577	261577	261577	261577	261577	261577	261577	261577
15	Hex Screw 1/4-20 x 5/8"	3	S324-102	S324-102	S324-102	S324-102	S324-102	S324-102	S324-102	S324-102
16	Collector Ring Assembly	1	602296	602296	602296	602296	602296	602296	602296	602296
17	Cover	1	261723	261723	261723-W	261723-W	261723	261723	261723	261723
18	Snap Ring	1	S140-13	S140-13	S140-13	S140-13	S140-13	S140-13	S140-13	S140-13
19	Wire Nut	3	260774	260774	260774	260774	260774	260774	260774	260774
20	Grounding Cord Assembly	1	600283	600283	600283	600283	600283	600283	600283	600283
21	Lock Washer	1	S115-10	S115-10	S115-10	S115-10	S115-10	S115-10	S115-10	S115-10
22	Connect Terminal	1	260609	260609	260609	260609	260609	260609	260609	260609
23	Terminal Block Assembly	1	600205	600205	600205	600205	600205	600205	600205	600205
24	Sheave Assembly	1	602790	602790	602790	602790	602790	602790	602790	602790
25	Screw 10-32 x 3/8"	5	S46-105	S46-105	S46-105	S46-105	S46-105	S46-105	S46-105	S46-105
26	Latch Plate Spring	1	S400018	S400018	S400018	S400018	S400018	S400018	S400018	S400018
27	Screw 10-24 x 3/8"	1	S332-117	S332-117	S332-117	S332-117	S332-117	S332-117	S332-117	S332-117
28	Screw 10-32 x 1"	1	300035	300035	300035	300035	300035	300035	300035	300035
29	Latch Bumper	1	S400021	S400021	S400021	S400021	S400021	S400021	S400021	S400021
30	Latch Plate Bumper	1	600062	600062	600062	600062	600062	600062	600062	600062
31	Latch Bushing	1	260225	260225	260225	260225	260225	260225	260225	260225
32	Base Assembly	1	600056	600056	600056	600056	600056	600056	600056	600056
33	Main Shaft Kit	1	263124	263124	263124	263124	263124	263124	263124	263124
34	Spacing Washer	1	260238	260238	260238	260238	260238	260238	260238	260238
35	Drive Spring Assembly	1	504240	504240	504240	504240	504240	504240	504240	504240
36	Spring Case Assembly	1	600061-1	600061-1	600061-1	600061-1	600061-1	600061-1	600061-1	600061-1
37	Nyloc Nut 10-32 x 3/8"	1	S95-22	S95-22	S95-22	S95-22	S95-22	S95-22	S95-22	S95-22
38	Single Outlet	1	600251	602003	602792-25	602792-45	602236-15	602236-25	602236-45	None
39	Duplex Box Cord Assembly	1	None	None	None	None	None	None	None	602332-45
40	Triple Tap Cord Assembly	1	None	None	None	None	None	None	None	None
41	Flying Leads	1	None	None	None	None	None	None	None	None

Series LS 5000 Stainless Steel Cord Reels

Item #	Description	# Req.	LS 5445 123 7A	LS 5445 123 7B	LS 5445 123 9	LS 5445 123 9G	LS 5400	LS 5425 123 X	LS 5445 123 X
1	Inlet Cord Assembly	1	602002	602002	260630	260630	None	262307	262307
2	Connector, 90° Cord	1	261140-C	261140-C	261140-C	261140-C	261140-C	261140-C	261140-C
3	Set Screw 3/8-19 x 1/2" Pin	1	S47-64	S47-64	S47-64	S47-64	S47-64	S47-64	S47-64
4	Lock Nut 10-32 Hex	22	S348-15	S348-15	S348-15	S348-15	S348-15	S348-15	S348-15
5	Snap Ring	2	S147-25	S147-25	S147-25	S147-25	S147-25	S147-25	S147-25
6	Spring Case Stud	1	261361	261361	261361	261361	261361	261361	261361
7	Screw, 10-32 x 1/2"	2	S46-107	S46-107	S46-107	S46-107	S46-107	S46-107	S46-107
8	Guide Arm Assembly	1	600057	600057	600057	600057	600057	600057	600057
9	Bumper Assembly	1	1-HS1004-A	1-HS1004-A	1-HS1004-A	1-HS1004-A	1-HS1004-A	1-HS1004-A	1-HS1004-A
10	Spring Arbor	1	S400017	S400017	S400017	S400017	S400017	S400017	S400017
11	Latch Cam	1	260224	260224	260224	260224	260224	260224	260224
12	Sheave Disc	1	260223	260223	260223	260223	260223	260223	260223
13	Strain Relief	1	260633	260633	260633	260633	260633	260633	260633
14	Plate Adapter	1	261577	261577	261577	261577	261577	261577	261577
15	Hex Screw 1/4-20 x 5/8"	3	S324-102	S324-102	S324-102	S324-102	S324-102	S324-102	S324-102
16	Collector Ring Assembly	1	602296	602296	602296	602296	602296	602296	602296
17	Cover	1	261723	261723	261723	261723	261723	261723	261723
18	Snap Ring	1	S140-13	S140-13	S140-13	S140-13	S140-13	S140-13	S140-13
19	Wire Nut	3	260774	260774	260774	260774	260774	260774	260774
20	Grounding Cord Assembly	1	600283	600283	600283	600283	600283	600283	600283
21	Lock Washer	1	S115-10	S115-10	S115-10	S115-10	S115-10	S115-10	S115-10
22	Connect Terminal	1	260609	260609	260609	260609	260609	260609	260609
23	Terminal Block Assembly	1	600205	600205	600205	600205	600205	600205	600205
24	Sheave Assembly	1	602790	602790	602790	602790	602790	602790	602790
25	Screw 10-32 x 3/8"	5	S46-105	S46-105	S46-105	S46-105	S46-105	S46-105	S46-105
26	Latch Plate Spring	1	S400018	S400018	S400018	S400018	S400018	S400018	S400018
27	Screw 10-24 x 3/8"	1	S332-117	S332-117	S332-117	S332-117	S332-117	S332-117	S332-117
28	Screw 10-32 x 1"	1	300035	300035	300035	300035	300035	300035	300035
29	Latch Bumper	1	S400021	S400021	S400021	S400021	S400021	S400021	S400021
30	Latch Plate Bumper	1	600062	600062	600062	600062	600062	600062	600062
31	Latch Bushing	1	260225	260225	260225	260225	260225	260225	260225
32	Base Assembly	1	600056	600056	600056	600056	600056	600056	600056
33	Cable Path Axle	1	263124	263124	263124	263124	263124	263124	263124
34	Spacing Washer	1	260238	260238	260238	260238	260238	260238	260238
35	Drive Spring Assembly	1	504240	504240	504240	504240	504240	504240	504240
36	Spring Case Assembly	1	600061-1	600061-1	600061-1	600061-1	600061-1	600061-1	600061-1
37	Nyloc Nut 10-32 x 3/8"	1	S95-22	S95-22	S95-22	S95-22	S95-22	S95-22	S95-22
38	Single Outlet	1	None	None	None	None	None	None	None
39	Duplex Box Cord Assembly	1	602333-45	602255-45	None	None	None	None	None
40	Triple Tap Cord Assembly	1	None	None	602498	602497	None	None	None
41	Flying Leads	1	None	None	None	None	None	602353-25	602353-45