

# Operating Instructions

## Series L 5000 Spring Driven Cord Reels

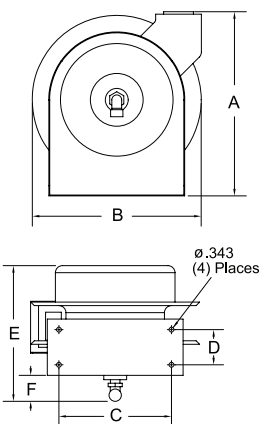
L 5000

L 5700

L 5750 103 X



### Dimensions - Size Index

	1	2
	<b>A</b> 14 3/8"	17 5/8"
<b>B</b> 14 1/4"	16 3/4"	
<b>C</b> 9 3/4"	9 3/4"	
<b>D</b> 2 1/2"	2 1/2"	
<b>E</b> 10 1/2"	12 1/2"	
<b>F</b> 2 1/8"	2 1/8"	

### IMPORTANT

Read this manual carefully before installing, operating or servicing this equipment.

### Electrical Information

Voltage	AMPS	Frequency
125	30	60 HZ Single Phase

### Safety Precautions

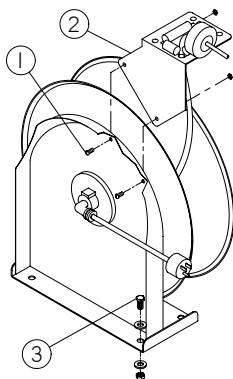
Personal injury and/or equipment damage may result if proper safety precautions are not observed.

- Ensure that only a qualified electrician installs/services this equipment.
- Ensure that power supply voltage does not exceed maximum voltage rating of reel.
- Ensure that reel is properly installed before connecting to power supply.
- All cord reels with flying leads must be hard wired to ensure proper function.

- Ensure that all electrical power is removed from reel before servicing.
- A high-tension spring assembly is contained within the reel. Exercise extreme caution.
- Check for frayed and/or broken wires before each use. Pull electrical cord from reel by grasping the electrical cord itself, not the work device.
- If an electrical malfunction should occur, remove power from reel immediately.

- Ensure that reel, electrical cord, and equipment being serviced are properly grounded. Use an ohmmeter to check ground continuity.
- If reel ceases to unwind or rewind, remove power immediately. Do not pull or jerk on electrical cord!
- Treat and respect the reel as any other piece of machinery, observing all common safety practices.

### Installation Instructions



#### Mounting

**CAUTION:** Unless reel was specified differently when ordering, maximum installation height is 16 feet. Do not exceed this distance. Ensure that only a qualified electrician installs/services this equipment. Installation of GFCI cord reels should be performed by a qualified and licensed professional in accordance with building codes and applicable NEC standards.

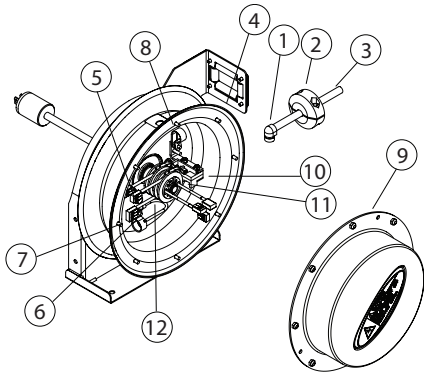
1. Unpack and inspect reel for damage. Turn by hand to check for smooth operation. Check for completeness.

2. Configure reel for top, side or bottom-wind (bottom-wind for constant tension reels only) electrical cord dispensing by removing bolts (1), securing guide arm bracket (2). Determine new guide arm location and remove corresponding bolts. Position guide arm bracket to reel and replace bolts.
3. Position reel on floor, wall, or ceiling. Secure into place, using four (customer supplied) screws or bolts (3).

Form# Rev: 1318-124 9/2024

### Installing the Input Electrical Cable

**WARNING:** Use only 10/3 cable for input wiring. Ensure that application does not exceed electrical rating of reel.

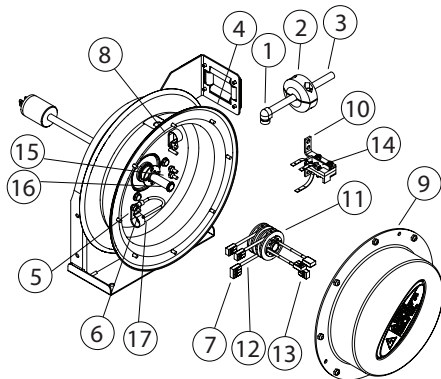


1. Feed input cable (1) through elbow (2) and main shaft.
2. Screw elbow (2) into reel.
3. Connect input wires (3) and collector ring wires (4) together using wire nuts (5).
4. Assemble cover (6) to reel.

### Installing the Output Electrical Cable

#### **WARNING: WIRE COLOR CODE**

Black-Hot  
White-Neutral  
Green-Ground



#### **WARNING:**

Select output cable in accordance with power requirement of apparatus to be supplied. Ensure that application does not exceed electrical rating of reel (see page 1 of this manual). Use extreme caution, reel under tension. Avoid releasing latch mechanism.

1. Manually turn sheave (7) until spring is tight, back off 2 turns, and latch.
2. Remove access cover (8).
3. Remove 6" of output electrical cable outer jacket.
4. Route cable through guide arm and U-clamp (9) then through cut-out (10) in spool.
5. Tighten U-clamp (9).
6. Using wire nuts (11), connect output electrical cable wires to collector assembly brush wires as indicated in illustration.

7. Connect ground wire of output electrical cable to ground lug (12) located on inner side of spool.
8. Using ohmmeter, check for ground faults.
9. Replace access cover (8). Release latch and wind output electrical cable onto reel.
10. Install bumper stop (13).

### Adjustments - Spring Tension

If necessary, adjust spring tension on reel by adding or removing wraps of electrical cord from spool, one wrap at a time, until desired tension is obtained. Add wraps to increase tension. Remove wraps to decrease tension.

**WARNING:** When adding wraps of electrical cord, be careful not to exceed the winding mechanism's spring capacity. Add just enough wraps of cord to achieve the desired tension. Damage to the winding mechanism will result if spring is over-tensioned. Always be aware of spring tension on reel. Exercise extreme caution.

### Troubleshooting Instructions

Troubleshooting of the reel consists of isolating a problem to a defective electrical cord/work device, brush holder/brushes, or collector assembly. Refer any other discrepancies only to an authorized service person or directly to Reelcraft.

#### **WARNING:**

The following procedure directs the technician to take voltage measurements. Remember, even low voltage is dangerous and can cause personal injury or death. Exercise extreme caution! Ensure that only a qualified electrician installs/services this equipment.

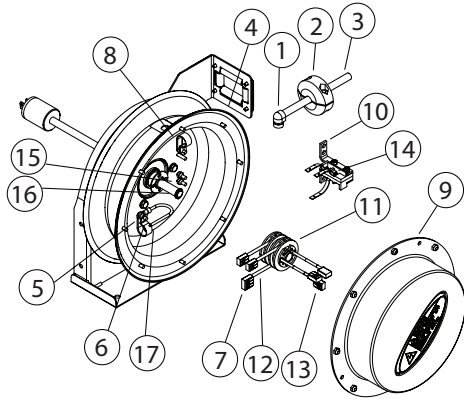
1. Remove power from reel.
2. Remove cover (8) from reel.
3. Remove wire nuts (14) securing input electrical cable wires to collector ring assembly wires. Ensure that bare wires do not contact each other or the reel superstructure.
4. Apply power to reel.
5. Using voltmeter, check voltage between black wire (hot) and white wire (neutral). If voltage reading is correct (120 vac), proceed to step 6. If voltage reading is incorrect, replace input electrical cable or Collector Ring Assembly (refer to Service Instructions).

### Service Instructions

#### **WARNING:**

Remove power from reel before performing any of the following procedures.

### Replacing the Input Electrical Cable



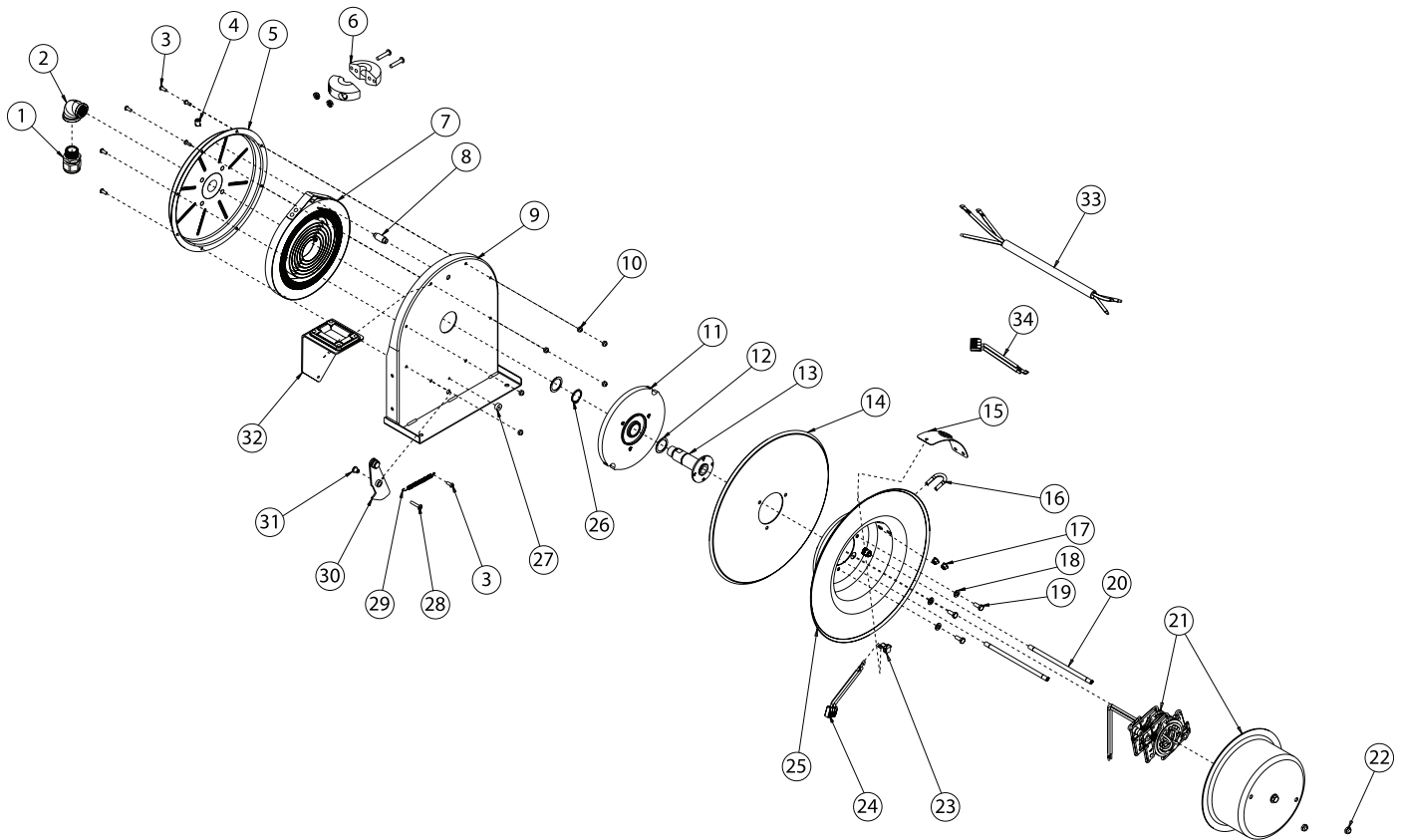
1. Remove access cover (9) from reel.
2. Remove wire nuts (14) connecting input electrical cable (4) wires to collector ring ass'y wires.
3. Unscrew elbow (5) from reel & pull out input cable from main shaft & elbow.
4. Install replacement input cable (refer to Installation Instructions).

### Replacing the Output Electrical Cord

#### **WARNING:**

Use extreme caution, reel under tension. Avoid releasing latch mechanism.

1. Pull output electrical cable from reel until cable is fully extended, then latch.
2. Remove access cover (8).
3. Remove wire nuts (11) securing output electrical cable wires to collector assembly brush wires.
4. Remove output electrical cable ground wire from ground lug (12).
5. Loosen U-clamp (9).
6. Remove output electrical cable.
7. Remove bumper stop (13).
8. Install replacement input electrical cable (refer to Installation Instructions).



Item #	Description	# Req.	L 5000	L 5700	L 5750 103 X
1	Cord Grip Assembly	1	261555	261555	None
2	90° Cord Connector	1	S158-3	S158-3	262293 262294
3	Screw 10-32 x 1/2"	7	300002	300002	300002
4	Set Screw 3/8-16 x 1/2"	1	300006	300006	300006
5	Spring Case and Hub	1	S500103	S600094	S600094
6	Bumper Stop Assembly	2	1-HR1004-3	1-HR1004-3	1-HR1004-3
7	Drive Spring Assembly	1	504240	600050	600050
8	Spring Case Stud	1	S261360	S261360	S261360
9	Base Assembly	1	500101	600029	600029
10	Nyloc Nut 10-32	8	S82-15	S82-15	S82-15
11	Ratchet Arbor	1	263383	263383	263383
12	Spacing Washer	2	300034	300034	300034
13	Flange Shaft	1	602391	602391	602391
14	Sheave Disc	1	500006	260151	260151
15	Strain Relief Cover	1	602846-35	602846-35	602846-35
16	U-Bolt	1	3-117440	3-117440	3-117440
17	Hex flange Lock nut 1/4-20	2	261650-1	261650-1	261650-1

Item #	Description	# Req.	L 5000	L 5700	L 5750 103 X
18	Hex Head Screw 1/4-20 x 5/8"	3	S2-42	S2-42	S2-42
19	Split Lock Washer 1/4"	3	902016	902016	902016
20	Cover Stud	2	391479-7.00	391479-6.75	391479-6.75
21	Slip Ring Kit	1	602375	602375	602375
22	Nyloc Nut 5/16-18	2	S85-7	S85-7	S85-7
23	Grounding Terminal	1	260675	260675	260675
24	Cord Assembly	1	602928	602928	602928
25	Sheave Assembly	1	602406	602388	602388
26	Snap Ring	2	None	300031	300031
27	Latch Bumper	1	S400021	S400021	S400021
28	Screw 10-32 x 1"	2	300035	None	None
29	Latch Plate Spring	2	S400018	S400018	S400018
30	Latch Plate Assembly	1	S400109	S400109	S400109
31	Latch Bushing	1	S400012	S400012	S400012
32	Guide Arm and Roller	1	S500107	S500107	S500107
33	Cord Assembly	1	None	None	602418
34	Cord Assembly	1	None	None	602928
Dimension Size Index # - See page 1			1	2	2