

Operating Instructions

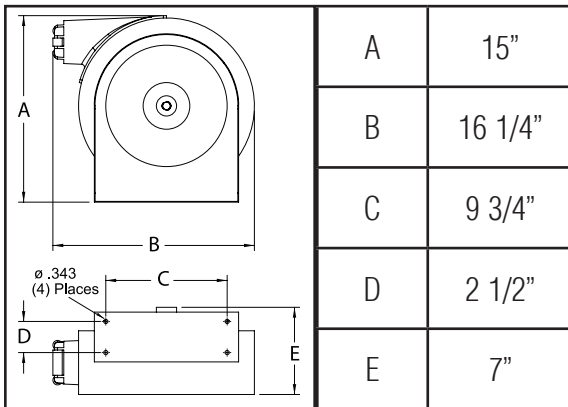
Series 5000 Spring Driven Hose Reels

Low Pressure Model Numbers:

5635 ELP 5450 ELP



Dimensions



SAFETY

1. Do not use reel at higher pressures or temperatures than listed on the back of this bulletin.
2. Remove all spring tension before beginning disassembly process.

INSTALLATION:

A flexible hose connection must be used between the hose reel inlet and the source of supply to prevent possible misalignment and binding.

MOUNTING:

The hose reel is equipped with a universal mounting bracket so that it can be mounted on the floor, wall or ceiling; whichever place is convenient. The hose guide arm can be moved to the position desired by removing the 1/4-20 hex nuts (4) fastening the hose guide enclosure to the reel back cover. Shift the hose guide enclosure to the desired position and replace the 1/4-20 hex nuts. **NOTE:** For proper installation in wall mount applications, ensure reel is mounted with inlet on the right as you are facing the reel. Failing to do so could cause latching issues.

LUBRICATION:

Hose reel spring and bearings are factory lubricated and require no further lubrication.

REPLACING HOSE:

1. Remove 1/4-20 hex nuts (4) which fasten the hose guide enclosure to the reel back cover and pull off the enclosure.
2. Wind spool flange clockwise-facing swivel-until spring is tight.
3. Back off three turns and latch.
4. Insert hose through roller guide.
5. Connect hose fitting to swivel joint and secure hose with clamps.

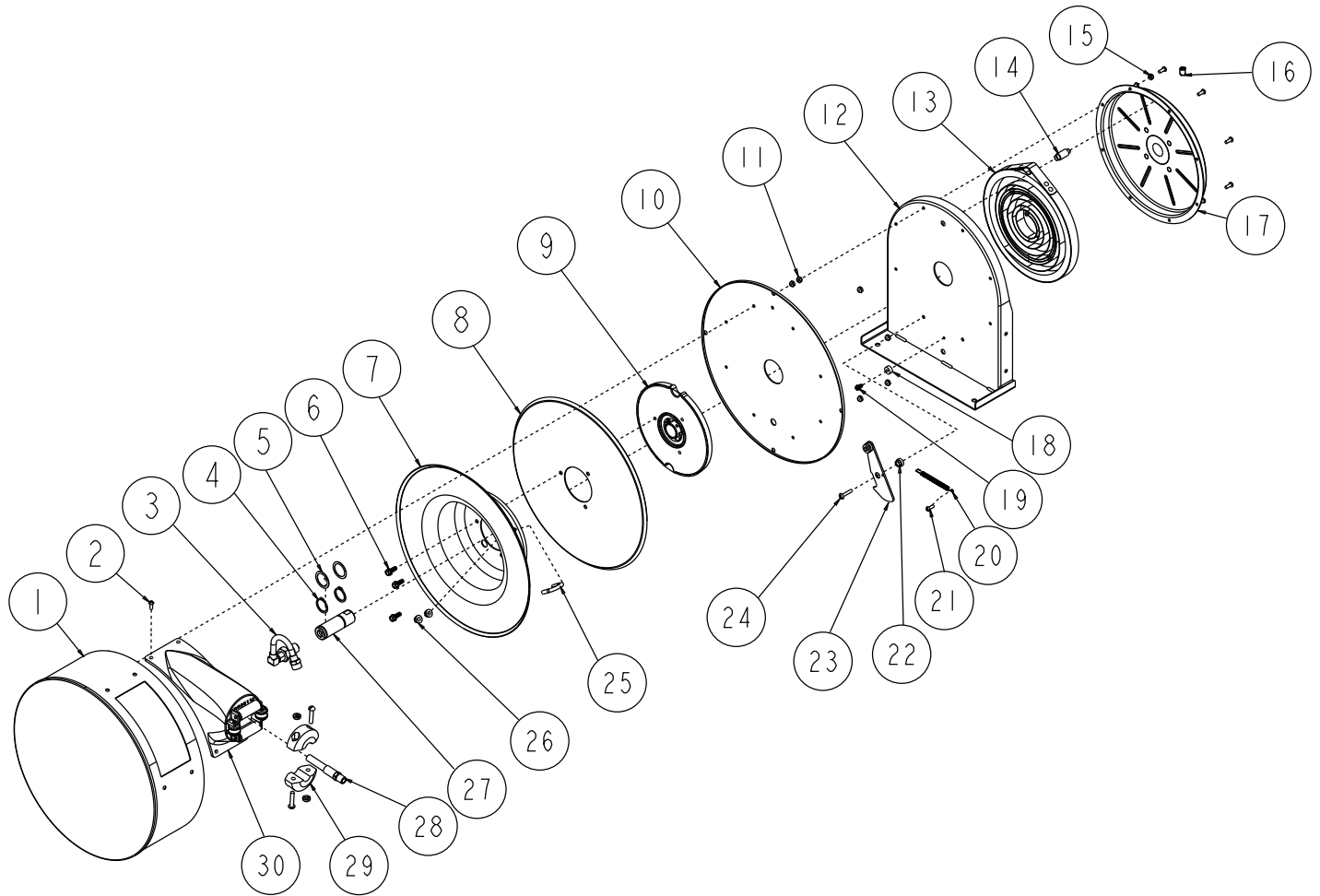
ADJUSTMENTS:

To adjust spring tension, add or remove wraps of hose from the spool, one wrap at a time until desired tension is obtained.

REPAIRS:

Extensive repairs should be performed only by an authorized serviceman or factory to avoid damage which may void your warranty. Remove all spring tension before beginning disassembly process.

Form# 490-884 Rev: 2/2024



Item #	Part #	# Req.	Description	Item #	Part #	# Req.	Description
1	500102	1	Case & Cover Assembly	16	300006	1	3/8-16 x 1/2" Set Screw
2	300001	4	10-32 x 3/8" Screw	17	S500103	1	Spring Case Assembly
3	S600886	1	Swivel assembly	18	S400021	1	Latch Bumper
4	300031	1	1" Snap Ring	19	S32-136	1	10-24 x 3/8" Screw
5	300034	4	Spacing Washer	20	S400018	1	Latch Spring
6	S295-102	3	1/4-10 x 5/8" Hex Screw	21	300002	7	10-32 x 1/2" Screw
7	260022	1	Sheave Flange	22	S400012	1	Latch Bushing
8	500006	1	Sheave Disk	23	S400109	1	Latch Plate Assembly
9	S263382	1	Ratchet Arbor	24	300035	1	10-32 x 1" Machine Screw
10	500004	1	Reel Cover	25	S3-117440	1	U-Bolt
11	300070	4	1/4-20 Nyloc Nut	26	261650-1	2	1/4-20 Nyloc Nut
12	500101	1	Base Assembly	27	S400015	1	Main Shaft
14	S261360	1	Spring Case Stud	30	HR2012	1	Hose Guide Assembly
15	S82-15	8	10-32 x 3/8" Nyloc Nut				

Item #	Description	# Req.	5450 ELP
13	Drive Spring Assembly	1	S503755
28	Hose Assembly	1	S601001-50
29	Bumper Stop Assembly	1	1-HR1004-A

Item #	Description	# Req.	5635 ELP
13	Drive Spring Assembly	1	S504240
28	Hose Assembly	1	S601013-35
29	Bumper Stop Assembly	1	1-HR1004