

Operating Instructions

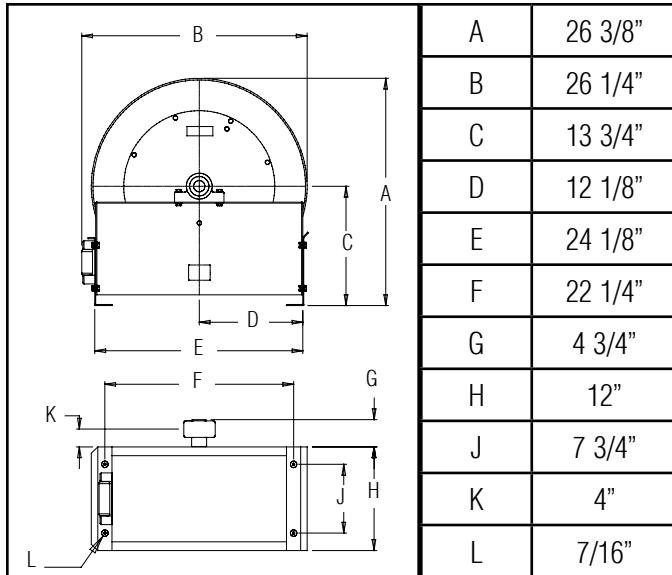
Series D9000 Spring Driven Hose Reels

Medium Pressure Model Numbers:

D9200 OMP D9300 OMP D9350 OMP
D9275 OMP D9330 OMP



Dimensions



Four 7/16" diameter mounting holes

SAFETY

1. Models designed for fuel are coded with the prefix "F" i.e., "FD9400 OMP." Check name plate on the reel before installing.
2. Do not use reel at higher pressures or temperatures than listed on the back of this bulletin.
3. Remove all spring tension before beginning disassembly process.
4. Reel spring motor case is permanently sealed. Any attempt to remove the spring motor may cause serious injury.

INSTALLATION:

The swivel union is packed separately in the reel carton, use teflon tape to assure a satisfactory seal. A flexible hose connection must be used between the hose reel inlet and the source of supply to prevent possible misalignment and binding. Non flexible connections will void the warranty, pressure rating of inlet hose must be equal to or more than the pressure rating of the reel. Consult factory for proper spring when installing reels above 16 ft.

LUBRICATION:

Hose reel spring and bearings are factory lubricated and require no further lubrication.

REPLACING HOSE:

1. Wind spool flange clockwise-facing swivel-until spring is tight.
2. Back off three turns and latch.
3. Insert hose through roller guide.
4. Connect hose fitting to female outlet ell.

ADJUSTMENTS:

To adjust spring tension, add or remove wraps of hose from the spool, one wrap at a time until desired tension is obtained.

REPAIRS:

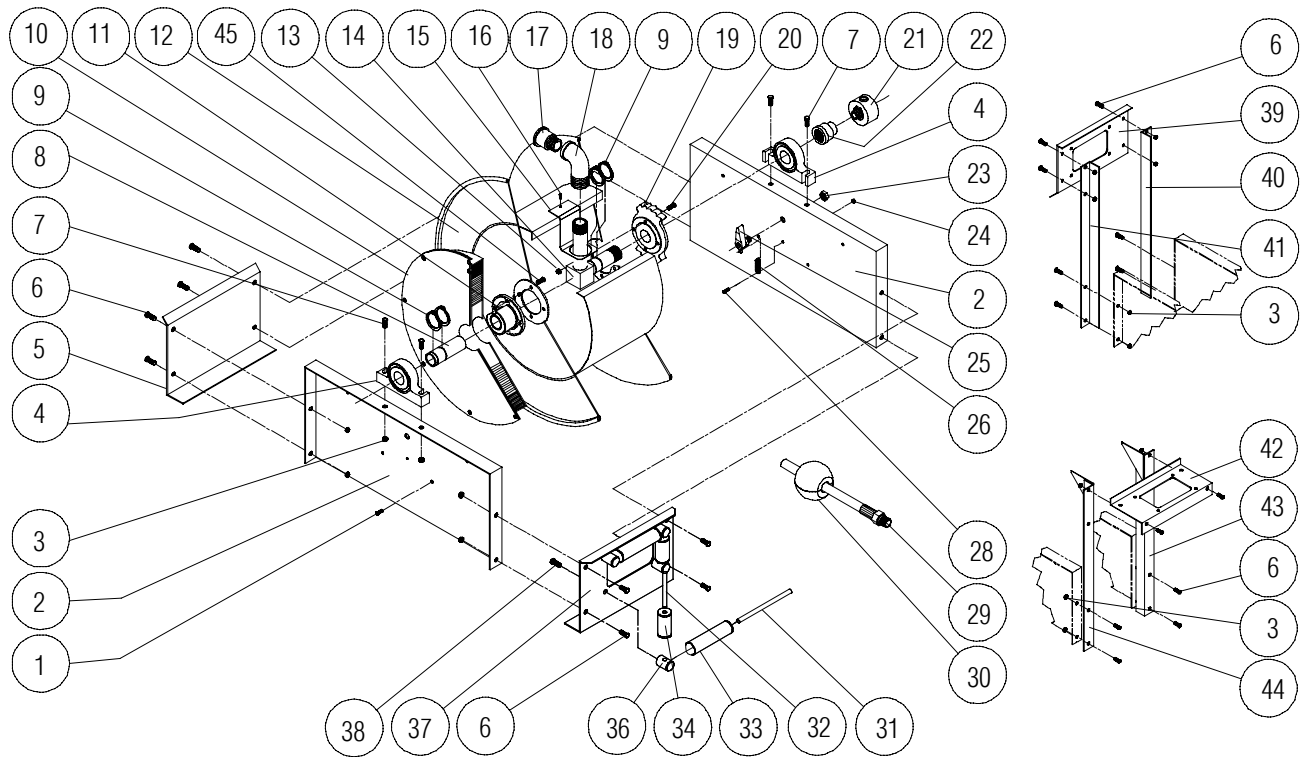
Extensive repairs should be performed only by an authorized serviceman or factory to avoid damage which may void your warranty. Remove all spring tension before beginning disassembly process.

MODIFICATION:

Hose latching mechanism can be removed for constant tension applications.

Form# 497-285 Rev: 11/2019

Series D9000 Spring Driven Hose Reels



Item #	Part #	# Req	Description	Item #	Part #	# Req	Description	Item #	Part #	# Req	Description
1	S2-41	4	1/4-20 x 1/2" hex screw	14	S270054	1	1" Inlet tube	33	262436-5.468	2	Guide roller
2	270009	2	Side frame	15	270029	1	Hose outlet support	34	262436-2.968	2	Guide roller
3	S281-6	12	3/8-16 hex flange nut	16	S32-136	1	#10 x 3/8" self tap screw	36	S270014	4	Guide roller post
4	S270058	2	Pillow block	18	270029	1	90° ell	37	270011	1	Hose guide roller plate
5	270012	1	End frame support	19	S270001	1	Latch ratchet hub	38	S2-51	4	5/16-18 x 1/2" hex screw
6	S44-2	8	3/8-16 x 5/8" mach. screw	20	S2-42	4	1/4-20 x 5/8" hex screw	39	270044	1	Guide roller plate SW
7	S44-8	4	3/8-16 x 1 3/4" screw	23	S280-8	1	1/2-20 hex flange nut	40	270042	1	SW support bracket
8	602314	1	Support shaft	24	S82-15	1	10-32 x 3/8" nyloc nut	41	270042	1	SW support bracket
9	S140-31	6	Snap ring	25	S600018	1	Latch pawl assembly	42	270044	1	Guide roller plate TW
10	S270105	1	Spring & case assembly	26	S260067	1	Latch spring	43	263190	1	Riser, roller plate LH
11	S270002	1	Spring arbor	28	S393-2	1	10-32 shoulder screw	44	263189	1	Riser, roller plate RH
12	270107	1	Sheave assembly	31	S270016	2	Guide roller pin - long	45	S328-29	4	5/16-18 x 1/2" screw
13	S281-4	8	1/4-20 hex flange nut	32	S270015	2	Guide roller pin - short				

Item #	Description	# Req	D9200 OMP	D9275 OMP	D9300 OMP	D9330 OMP	D9350 OMP
17	Bushing	1	S174-112	S174-112	300055	300055	300055
21	Swivel assembly	1	S602033	S602033	S602026	S602026	S602026
22	Coupling reducer	1	S290-5	S290-5	S290-6	S290-6	S290-6
29	Hose assembly	1	None	S24-260043	None	S26-260043	S27-260043
30	Bumper stop assembly	1	None	2-HR1005	None	3-HR1005	3-HR1005