



SERIES 5000 / 5005

Premium Duty Spring Retractable Reels



5650 OLP

Compact for a wide range of applications with critical space requirements

Hose is plumbed into the base to eliminate the risk of undue stress on the swivel

Reliable speed latch allows for positive locking of the spool in two positions per rotation

All steel components are powder coated for maximum corrosion resistance

Robotically welded steel base offers maximum strength and consistent quality

Guide arm adjusts to two positions



AIR



WATER



OIL



GREASE

I.D. Hose Sizes 1/4", 3/8", 1/2"

Reel Accessories

Part	Part Number	Specifications
Pivot Base	S600608	340°, Color: Black
Swing Bracket	600626	Wall Mount, Color: Black
Swing Bracket	600993	Wall Mount, Color: Red
Inlet Hose	Visit reelcraft.com for more information	



Model with Hose and Bumper	Shipping Weight		Hose I.D.		Hose O.D.		Hose Length		Max Pressure		NPT(M) Hose Outlet	NPT(F) Reel Inlet	NPT(F) Reel Outlet	Size Index #
	lbs	kg	in	mm	in	mm	ft	m	psi	bar	in	in	in	
Low Pressure Air/Water Reels Maximum Temperature 150°F (65°C) Maximum Working Pressure is at 70°F (20°C)														
5450 OLP**	26	12	1/4	6	.475	12	50	15	300	21	1/4	3/8	1/4	1
5635 OLP	25	11	3/8	10	.600	15	35	11	300	21	1/4	3/8	1/4	1
5650 OLP*	36	16	3/8	10	.600	15	50	15	300	21	1/4	3/8	1/4	2
A5825 OLP	27	12	1/2	13	.750	19	25	8	300	21	1/2	3/8	1/2	1
A5835 OLP	39	18	1/2	13	.750	19	35	11	300	21	3/8	3/8	1/2	2
A5850 OLP*	41	19	1/2	13	.750	19	50	15	300	21	1/2	3/8	1/2	3
Medium Pressure Oil Reels Maximum Temperature 210°F (99°C)														
5630 OMP	31	14	3/8	10	.690	18	30	9	2600	179	3/8	3/8	3/8	1
A5835 OMP	42	19	1/2	13	.820	21	35	11	3000	207	1/2	3/8	1/2	2

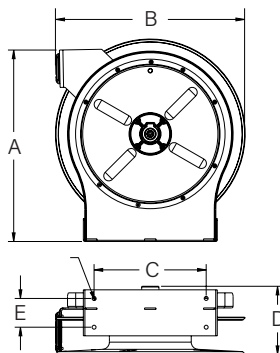
*Most popular models | Low pressure reels supplied with PVC hose. Medium pressure reels supplied with S.A.E. 100R1-AT (3/8") or S.A.E. 100R17 (1/2") one wire braid hose.

**Steel enclosed model available; visit Reelcraft.com for more information.

Model without Hose and Bumper	Shipping Weight		Hose Capacity					Max Pressure		NPT(F) Reel Inlet	NPT(F) Reel Outlet	Size Index #		
	lbs	kg	Hose I.D.		Hose O.D.		Hose Length		psi	bar	in		in	
Low Pressure Air/Water Reels Maximum Temperature 210°F (99°C)														
5400 OLP	20	9	1/4	6	.475	12	50	15	500	35	3/8	1/4	1	
5600 OLP	21	10	3/8	10	.600	15	35	11	500	35	3/8	1/4	1	
5605 OLP	21	10	3/8	10	.600	15	50	15	500	35	3/8	1/4	2	
A5800 OLP	22	10	1/2	13	.750	19	25	8	500	35	3/8	1/2	1	
A5806 OLP	35	16	1/2	13	.750	19	50	15	500	35	3/8	1/2	3	
Medium Pressure Oil Reels Maximum Temperature 210°F (99°C)														
5400 OMP	23	10	1/4	6	.530	13	35	11	3000	207	3/8	3/8	1	
5600 OMP	24	11	3/8	10	.690	18	30	9	3000	207	3/8	3/8	1	
A5805 OMP	32	15	1/2	13	.820	21	35	11	3000	207	3/8	1/2	2	
High Pressure Grease Reels Maximum Temperature 210°F (99°C)														
5400 OHP	23	10	1/4	6	.580	15	30	9	5000	345	1/4	1/4	1	

Dimensions - Size Index

	1		2		3	
	in	mm	in	mm	in	mm
A	14 3/8	365	17 5/8	448	17 5/8	448
B	13 3/4	349	16 3/4	425	16 3/4	425
C	9 3/4	248	9 3/4	248	9 3/4	248
D	2 1/2	64	2 1/2	64	2 1/2	64
E	6 1/8	156	5 7/8	149	7 1/4	184



Additional Models Available for:



CORD



TWIN HYDRAULIC



WELDING



Interactive Reel Catalog

