

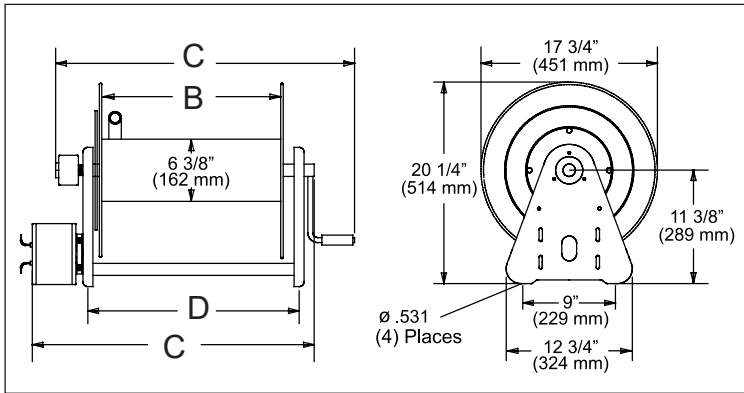
Operating Instructions

Series 30000 Air Motor Driven Reels

| | | | | |
|-------------|-------------|-------------|-------------|-------------|
| AA30106 L4A | AA30118 M6A | AA32106 M4A | AA32122 M6A | AA33118 L4A |
| AA30106 L6A | AA30122 L4A | AA32106 M6A | AA32128 L6A | AA33118 L6A |
| AA30106 M4A | AA30122 L6A | AA32112 L4A | AA32128 M6A | AA33118 M4A |
| AA30106 M6A | AA30122 M4A | AA32112 L6A | AA33106 L4A | AA33118 M6A |
| AA30112 L4A | AA30122 M6A | AA32112 M4A | AA33106 L6A | AA33122 L4A |
| AA30112 L6A | AA30128 L4A | AA32112 M6A | AA33106 M4A | AA33122 L6A |
| AA30112 M4A | AA30128 L6A | AA32118 L4A | AA33106 M6A | AA33122 M4A |
| AA30112 M6A | AA30128 M4A | AA32118 L6A | AA33112 L4A | AA33128 L6A |
| AA30118 L4A | AA30128 M6A | AA32118 M4A | AA33112 L6A | AA33128 M6A |
| AA30118 L6A | AA32106 L4A | AA32118 M6A | AA33112 M4A | |
| AA30118 M4A | AA32106 L6A | AA32122 L6A | AA33112 M6A | |



Dimensional Data



| Part # | B | C | D |
|-----------------------|-----|---------|---------|
| 30106 / 32106 / 33106 | 6" | 17 1/4" | 9 3/4" |
| 30112 / 32112 / 33112 | 12" | 23 1/4" | 15 3/4" |
| 30118 / 32118 / 33118 | 18" | 29 5/8" | 21 3/4" |
| 30122 / 32122 / 33122 | 22" | 33 1/4" | 25 3/4" |
| 30128 / 32128 / 33128 | 27" | 38 1/4" | 30 3/4" |

Safety Precautions

Personal injury and/or equipment damage may result if proper safety precautions are not observed.

- Ensure that the reel has been properly installed before connecting supply line (see installation instructions).
- Bleed fluid/gas pressure from system before servicing reel.
- Before connecting reel to supply line ensure that supply line pressure does not exceed maximum rated working pressure of reel.
- Do not play pranks on other personnel. Even low pressure is very dangerous and can cause irreparable damage or death.
- Do not wear loose fitting clothing while operating reel.
- Be aware of other personnel in work area.
- Be aware of other machinery in work area.
- If a leak occurs in the hose or reel, remove supply line pressure immediately.
- If the reel is power driven check for loose, frayed, and/or broken wires before operating.
- Treat and respect a hose reel as any other piece of machinery, observing all common safety practices.

Form# 534-89C Rev. 2/2020

INSTALLATION INSTRUCTIONS

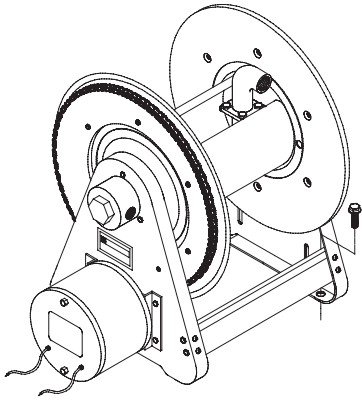
Inspection

Unpack and inspect the reel for damage. Turn the reel by hand to check for smooth operation. Check for completeness.

Mounting of all hose reels

NOTE: Ensure that mounting surface is flat to prevent binding on reel after it is mounted.

1. Two 1/2" diameter mounting holes are located at the base of each side support panel (2 each). Mount reel using four (customer supplied) bolts; tightening them securely to ensure a solid, rigid attachment.



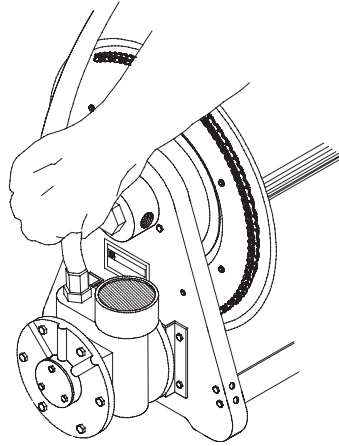
2. Perform the following steps only after all other installation steps, pertaining to your particular reel, are accomplished. Refer to page 4 for special instructions.

NOTE: A flexible hose connection must be used to compensate for any offset between the supply line and the reel swivel.

3. Apply thread compound to all threads.
4. Thread male connector of supply line into swivel. Tighten securely.

WARNING: Do not exceed 100 PSI motor inlet pressure. Use an FRL or control valve in line to adjust speed of motor.

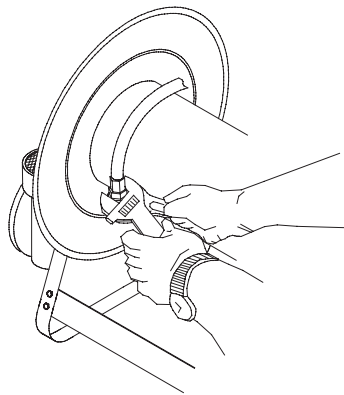
5. Connect air line to motor in accordance with diagram.



Connecting the hose

CAUTION: Do not connect the hose to the connecting tube assembly until after hose reel has been installed. Fully extend and charge hose before winding on to reel. Momentarily open control valve, when initially charging, to purge hose of gases. When fluid appears at control valve, close valve. This prevents flattening of the hose and excessive pressure on the drum when fluid supply is reinitialized at a later time.

1. Apply thread compound to all threads.
2. Hand thread male hose connector into connecting tube assembly.
3. Using a wrench, firmly hold onto connecting tube assembly while tightening hose connector.



OPERATING INSTRUCTIONS

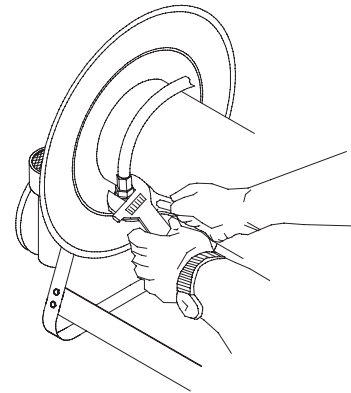
WARNING-PREVENT STATIC

SPARKING: When working around flammable liquids such as solvents, paints, chemicals or petroleum products, ensure that the hose reel, hose and the equipment being serviced are properly grounded. Use grounded hose(s) (static wire). Use an ohmmeter to check continuity of the ground circuit. Fire and/or explosion can result if proper grounding is not achieved. If reel is power or air driven, be careful of chain/sprocket drive system. Keep hands clear. Do not wear loose fitting clothing. Pull hose from the reel by grasping the hose itself, not the control handle or swivel.

SERVICE INSTRUCTIONS

Replacing the hose

1. Using a wrench, firmly hold onto the connecting tube assembly while removing hose connector.
2. Follow procedures for "Connecting the hose" (refer to installation instructions).



Replacing the swivel

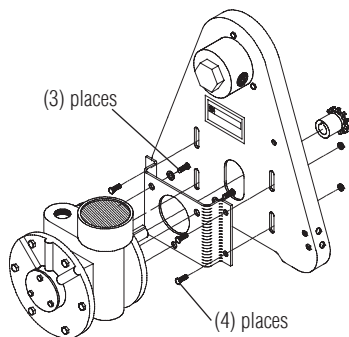
CAUTION: Remove supply line pressure before performing the following procedure.

1. Remove supply line from swivel.
2. Remove swivel assembly from inlet shaft.
3. Install swivel assembly to inlet shaft by reversing steps 1 and 2. Apply thread compound to all threads.

Replacing the motor

CAUTION: Before replacing the motor, remove all air pressure from motor.

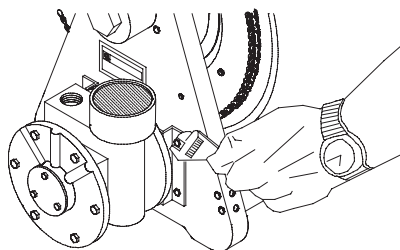
1. Disconnect air lines from motor.
2. Remove bolts securing motor mounting bracket to reel. Remove bracket (refer to diagram on page 3).



Replacing the chain

CAUTION: Before replacing the chain, remove all air pressure from motor.

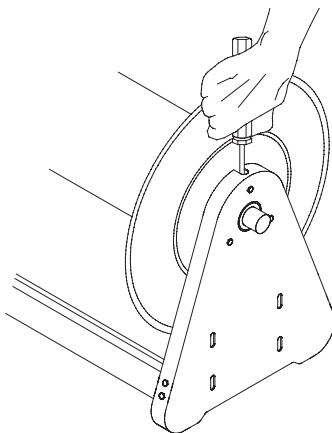
1. Loosen (do not remove) bolts securing motor mounting bracket in place.
2. Remove chain master-link.
3. Remove chain master-link. Install new chain by reversing steps 1 and 2 above.



ADJUSTMENT PROCEDURES

Adjusting the reel

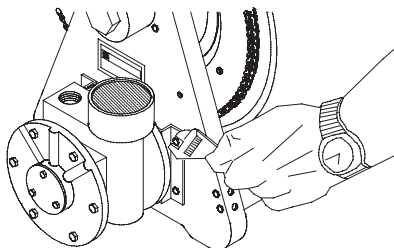
1. Adjust reel drag by loosening or tightening set screw on hub casting on manual driven reel.

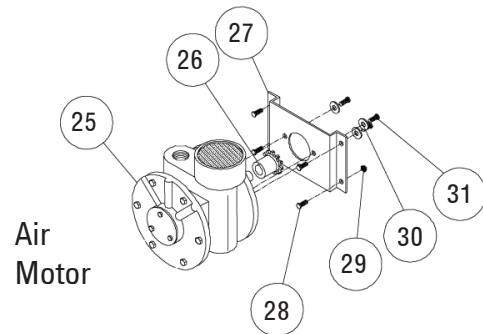
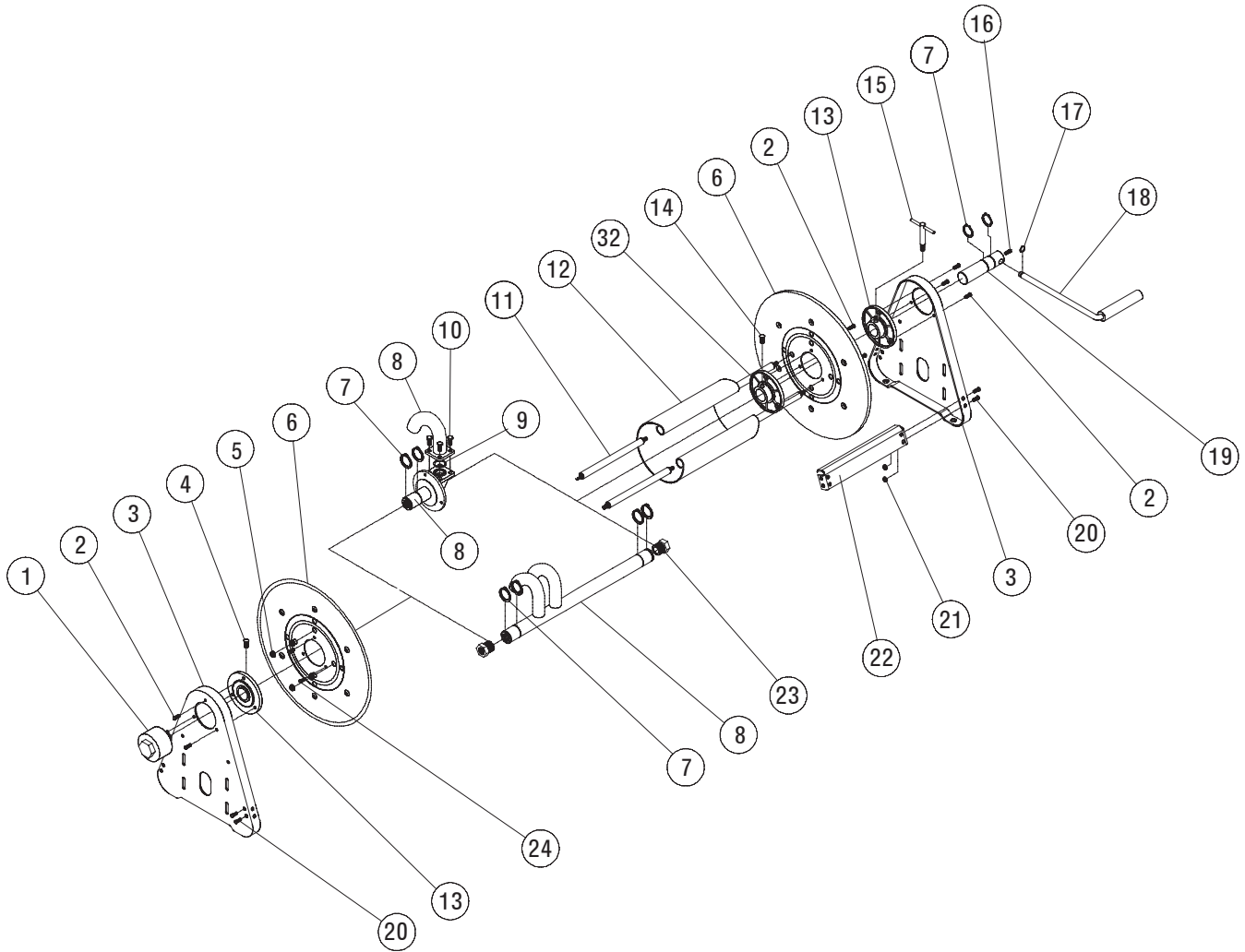


Adjusting the chain tension

CAUTION: Before adjusting the chain tension, remove all air pressure from motor. Over-tensioned (tightening) of chain results in reduced motor life. Adjust to allow between 1/4 and 1/2 inch play in chain.

1. Loosen bolts (do not remove) securing motor mounting bracket to reel.
2. Move motor mounting bracket and motor until proper chain tension is obtained.
3. Tighten motor mounting bracket bolts.





Series 30000 Air Motor Driven Reels

| ITEM | DESCRIPTION | QTY. | AA30106 L4A | AA30106 L6A | AA30106 M4A | AA30106 M6A | AA30112 L4A | AA30112 L6A | AA30112 M4A | AA30112 M6A |
|------|------------------------|------|-------------|-------------|-------------|-------------|-------------|-------------|-------------|-------------|
| 1 | Swivel assembly | 1 | NONE | NONE | NONE | NONE | NONE | NONE | NONE | NONE |
| 2 | Screw, 5/16-12 x 5/8" | 6 | S317-31 | S317-31 | S317-31 | S317-31 | S317-31 | S317-31 | S317-31 | S317-31 |
| 3 | Side frame | 2 | 260403 | 260403 | 260403 | 260403 | 260403 | 260403 | 260403 | 260403 |
| 5 | Nut, 5/16-18 | 8 | S85-7 | S85-7 | S85-7 | S85-7 | S85-7 | S85-7 | S85-7 | S85-7 |
| 6 | Spool flange | 2 | S260399-3 | S260399-3 | S260399-3 | S260399-3 | S260399-3 | S260399-3 | S260399-3 | S260399-3 |
| 7 | Snap ring | 4 | 300007 | 300007 | 300007 | 300007 | 300007 | 300007 | 300007 | 300007 |
| 8 | Inlet assembly | 1 | 600327-2 | 600327-2 | 600327-2 | 600327-2 | 600327-2 | 600327-2 | 600327-2 | 600327-2 |
| 9 | O-ring | 1 | S211-120 | S211-120 | S211-120 | S211-120 | S211-120 | S211-120 | S211-120 | S211-120 |
| 10 | Screw, 5/16-18 x 3/4" | 4 | S7-51 | S7-51 | S7-51 | S7-51 | S7-51 | S7-51 | S7-51 | S7-51 |
| 11 | Tie rod | 4 | 260402-100 | 260402-200 | 260402-200 | 260402-200 | 260402-200 | 260402-200 | 260402-200 | 260402-200 |
| 12 | Spacer | 4 | 260401-1 | 260401-2 | 260401-2 | 260401-2 | 260401-2 | 260401-2 | 260401-2 | 260401-2 |
| 13 | Hub & bushing assembly | 2 | S600640 | S600640 | S600640 | S600640 | S600640 | S600640 | S600640 | S600640 |
| 15 | Lock handle assembly | 1 | S280109 | S280109 | S280109 | S280109 | S280109 | S280109 | S280109 | S280109 |
| 20 | Screw, 5/16-18 x 5/8" | 8 | S2-52 | S2-52 | S2-52 | S2-52 | S2-52 | S2-52 | S2-52 | S2-52 |
| 21 | Nut, 5/16-18 | 8 | 300107 | 300107 | 300107 | 300107 | 300107 | 300107 | 300107 | 300107 |
| 22 | Cross brace | 2 | 263121-1 | 263121-2 | 263121-2 | 263121-2 | 263121-2 | 263121-2 | 263121-2 | 263121-2 |
| 24 | Screw, 1/4-20 x 5/8" | 6 | S2-42 | S2-42 | S2-42 | S2-42 | S2-42 | S2-42 | S2-42 | S2-42 |
| 25 | Drive motor | 1 | 260428 | 260429 | 260428 | 260429 | 260428 | 260429 | 260428 | 260429 |
| 26 | Gear, motor | 1 | 260436 | 260408 | 260436 | 260408 | 260436 | 260408 | 260436 | 260408 |
| 27 | Bracket, motor | 1 | 260405 | 260433 | 260405 | 260433 | 260405 | 260433 | 260405 | 260433 |
| 28 | Screw 5/16-18 x 5/8" | 4 | S2-52 | S2-52 | S2-52 | S2-52 | S2-52 | S2-52 | S2-52 | S2-52 |
| 29 | Lock nut 5/16-18 | 12 | S85-7 | S85-7 | S85-7 | S85-7 | S85-7 | S85-7 | S85-7 | S85-7 |
| 30 | Washer | 7 | 300039 | 300039 | 300039 | 300039 | 300039 | 300039 | 300039 | 300039 |
| 31 | Screw 5/16-18 x 5/8" | 3 | S317-31 | S317-31 | S317-31 | S317-31 | S317-31 | S317-31 | S317-31 | S317-31 |
| 32 | Collar | 1 | 602688 | 602688 | 602688 | 602688 | 602688 | 602688 | 602688 | 602688 |

| ITEM | DESCRIPTION | QTY. | AA30118 L4A | AA30118 L6A | AA30118 M4A | AA30118 M6A | AA30122 L4A | AA30122 L6A | AA30122 M4A | AA30122 M6A |
|------|------------------------|------|-------------|-------------|-------------|-------------|-------------|-------------|-------------|-------------|
| 1 | Swivel assembly | 1 | NONE | NONE | NONE | NONE | NONE | NONE | NONE | NONE |
| 2 | Screw, 5/16-12 x 5/8" | 6 | S317-31 | S317-31 | S317-31 | S317-31 | S317-31 | S317-31 | S317-31 | S317-31 |
| 3 | Side frame | 2 | 260403 | 260403 | 260403 | 260403 | 260403 | 260403 | 260403 | 260403 |
| 5 | Nut, 5/16-18 | 8 | S85-7 | S85-7 | S85-7 | S85-7 | S85-7 | S85-7 | S85-7 | S85-7 |
| 6 | Spool flange | 2 | S260399-3 | S260399-3 | S260399-3 | S260399-3 | S260399-3 | S260399-3 | S260399-3 | S260399-3 |
| 7 | Snap ring | 4 | 300007 | 300007 | 300007 | 300007 | 300007 | 300007 | 300007 | 300007 |
| 8 | Inlet assembly | 1 | 600327-2 | 600327-2 | 600327-2 | 600327-2 | 600327-2 | 600327-2 | 600327-2 | 600327-2 |
| 9 | O-ring | 1 | S211-120 | S211-120 | S211-120 | S211-120 | S211-120 | S211-120 | S211-120 | S211-120 |
| 10 | Screw, 5/16-18 x 3/4" | 4 | S7-51 | S7-51 | S7-51 | S7-51 | S7-51 | S7-51 | S7-51 | S7-51 |
| 11 | Tie rod | 4 | 260402-300 | 260402-300 | 260402-300 | 260402-300 | 260402-400 | 260402-400 | 260402-400 | 260402-400 |
| 12 | Spacer | 4 | S260401-3 | S260401-3 | S260401-3 | S260401-3 | S260401-4 | S260401-4 | S260401-4 | S260401-4 |
| 13 | Hub & bushing assembly | 2 | S600640 | S600640 | S600640 | S600640 | S600640 | S600640 | S600640 | S600640 |
| 15 | Lock handle assembly | 1 | S280109 | S280109 | S280109 | S280109 | S280109 | S280109 | S280109 | S280109 |
| 20 | Screw, 5/16-18 x 5/8" | 8 | S2-52 | S2-52 | S2-52 | S2-52 | S2-52 | S2-52 | S2-52 | S2-52 |
| 21 | Nut, 5/16-18 | 8 | 300107 | 300107 | 300107 | 300107 | 300107 | 300107 | 300107 | 300107 |
| 22 | Cross brace | 2 | 263121-3 | 263121-3 | 263121-3 | 263121-3 | 263121-4 | 263121-4 | 263121-4 | 263121-4 |
| 24 | Screw, 1/4-20 x 5/8" | 6 | S2-42 | S2-42 | S2-42 | S2-42 | S2-42 | S2-42 | S2-42 | S2-42 |
| 25 | Drive motor | 1 | 260428 | 260429 | 260428 | 260429 | 260428 | 260429 | 260428 | 260429 |
| 26 | Gear, motor | 1 | 260436 | 260408 | 260436 | 260408 | 260436 | 260408 | 260436 | 260408 |
| 27 | Bracket, motor | 1 | 260405 | 260433 | 260405 | 260433 | 260405 | 260433 | 260405 | 260433 |
| 28 | Screw 5/16-18 x 5/8" | 4 | S2-52 | S2-52 | S2-52 | S2-52 | S2-52 | S2-52 | S2-52 | S2-52 |
| 29 | Lock nut 5/16-18 | 12 | S85-7 | S85-7 | S85-7 | S85-7 | S85-7 | S85-7 | S85-7 | S85-7 |
| 30 | Washer | 7 | 300039 | 300039 | 300039 | 300039 | 300039 | 300039 | 300039 | 300039 |
| 31 | Screw 5/16-18 x 5/8" | 3 | S317-31 | S317-31 | S317-31 | S317-31 | S317-31 | S317-31 | S317-31 | S317-31 |
| 32 | Collar | 1 | 602688 | 602688 | 602688 | 602688 | 602688 | 602688 | 602688 | 602688 |

Series 30000 Air Motor Driven Reels

| ITEM | DESCRIPTION | QTY. | AA30128 L4A | AA30128 L6A | AA30128 M4A | AA30128 M6A | AA32106 L4A | AA32106 L6A | AA32106 M4A | AA32106 M6A |
|------|------------------------|------|----------------|----------------|----------------|----------------|----------------|----------------|----------------|----------------|
| 1 | Swivel assembly | 1 | NONE | NONE | NONE | NONE | S600888-1 | S600888-1 | S602033 | S602033 |
| 2 | Screw, 5/16-12 x 5/8" | 6 | S317-31 | S317-31 | S317-31 | S317-31 | S317-31 | S317-31 | S317-31 | S317-31 |
| 3 | Side frame | 2 | 260403 | 260403 | 260403 | 260403 | 260403 | 260403 | 260403 | 260403 |
| 5 | Nut, 5/16-18 | 8 | S85-7 | S85-7 | S85-7 | S85-7 | S85-7 | S85-7 | S85-7 | S85-7 |
| 6 | Spool flange | 2 | S260399-3 | S260399-3 | S260399-3 | S260399-3 | S260399-3 | S260399-3 | S260399-3 | S260399-3 |
| 7 | Snap ring | 4 | 300007 | 300007 | 300007 | 300007 | 300007 | 300007 | 300007 | 300007 |
| 8 | Inlet assembly | 1 | 600327-2 | 600327-2 | 600327-2 | 600327-2 | 600327-2 | 600327-2 | 600327-2 | 600327-2 |
| 9 | O-ring | 1 | S211-120 | S211-120 | S211-120 | S211-120 | S211-120 | S211-120 | S211-120 | S211-120 |
| 10 | Screw, 5/16-18 x 3/4" | 4 | S7-51 | S7-51 | S7-51 | S7-51 | S7-51 | S7-51 | S7-51 | S7-51 |
| 11 | Tie rod | 4 | 260402-500 | 260402-500 | 260402-500 | 260402-500 | 260402-100 | 260402-100 | 260402-100 | 260402-100 |
| 12 | Spacer | 4 | S260401-5 | S260401-5 | S260401-5 | S260401-5 | 260401-1 | 260401-1 | 260401-1 | 260401-1 |
| 13 | Hub & bushing assembly | 2 | S600640 | S600640 | S600640 | S600640 | S600640 | S600640 | S600640 | S600640 |
| 15 | Lock handle assembly | 1 | S280109 | S280109 | S280109 | S280109 | S280109 | S280109 | S280109 | S280109 |
| 20 | Screw, 5/16-18 x 5/8" | 8 | S2-52 | S2-52 | S2-52 | S2-52 | S2-52 | S2-52 | S2-52 | S2-52 |
| 21 | Nut, 5/16-18 | 8 | 300107 | 300107 | 300107 | 300107 | 300107 | 300107 | 300107 | 300107 |
| 22 | Cross brace | 2 | 263121-5 | 263121-5 | 263121-5 | 263121-5 | 263121-1 | 263121-1 | 263121-1 | 263121-1 |
| 24 | Screw, 1/4-20 x 5/8" | 6 | S2-42 | S2-42 | S2-42 | S2-42 | S2-42 | S2-42 | S2-42 | S2-42 |
| 25 | Drive motor | 1 | 260428 | 260429 | 260428 | 260429 | 260428 | 260429 | 260428 | 260429 |
| 26 | Gear, motor | 1 | 260436 | 260408 | 260436 | 260408 | 260436 | 260408 | 260436 | 260408 |
| 27 | Bracket, motor | 1 | 260405 | 260433 | 260405 | 260433 | 260405 | 260433 | 260405 | 260433 |
| 28 | Screw 5/16-18 x 5/8" | 4 | S2-52 | S2-52 | S2-52 | S2-52 | S2-52 | S2-52 | S2-52 | S2-52 |
| 29 | Lock nut 5/16-18 | 12 | S85-7 | S85-7 | S85-7 | S85-7 | S85-7 | S85-7 | S85-7 | S85-7 |
| 30 | Washer | 7 | 300039 | 300039 | 300039 | 300039 | 300039 | 300039 | 300039 | 300039 |
| 31 | Screw 5/16-18 x 5/8" | 3 | S317-31 | S317-31 | S317-31 | S317-31 | S317-31 | S317-31 | S317-31 | S317-31 |
| 32 | Collar | 1 | 602688 | 602688 | 602688 | 602688 | 602688 | 602688 | 602688 | 602688 |

| ITEM | DESCRIPTION | QTY. | AA32112 L4A | AA32112 L6A | AA32112 M4A | AA32112 M6A | AA32118 L4A | AA32118 L6A | AA32118 M4A | AA32118 M6A |
|------|------------------------|------|----------------|----------------|----------------|----------------|----------------|----------------|----------------|----------------|
| 1 | Swivel assembly | 1 | S600888-1 | S600888-1 | S602033 | S602033 | S600888-1 | S600888-1 | S602033 | S602033 |
| 2 | Screw, 5/16-12 x 5/8" | 6 | S317-31 | S317-31 | S317-31 | S317-31 | S317-31 | S317-31 | S317-31 | S317-31 |
| 3 | Side frame | 2 | 260403 | 260403 | 260403 | 260403 | 260403 | 260403 | 260403 | 260403 |
| 5 | Nut, 5/16-18 | 8 | S85-7 | S85-7 | S85-7 | S85-7 | S85-7 | S85-7 | S85-7 | S85-7 |
| 6 | Spool flange | 2 | S260399-3 | S260399-3 | S260399-3 | S260399-3 | S260399-3 | S260399-3 | S260399-3 | S260399-3 |
| 7 | Snap ring | 4 | 300007 | 300007 | 300007 | 300007 | 300007 | 300007 | 300007 | 300007 |
| 8 | Inlet assembly | 1 | 600327-2 | 600327-2 | 600327-2 | 600327-2 | 600327-2 | 600327-2 | 600327-2 | 600327-2 |
| 9 | O-ring | 1 | S211-120 | S211-120 | S211-120 | S211-120 | S211-120 | S211-120 | S211-120 | S211-120 |
| 10 | Screw, 5/16-18 x 3/4" | 4 | S7-51 | S7-51 | S7-51 | S7-51 | S7-51 | S7-51 | S7-51 | S7-51 |
| 11 | Tie rod | 4 | 260402-200 | 260402-200 | 260402-200 | 260402-200 | 260402-300 | 260402-300 | 260402-300 | 260402-300 |
| 12 | Spacer | 4 | 260401-2 | 260401-2 | 260401-2 | 260401-2 | 260401-3 | 260401-3 | 260401-3 | 260401-3 |
| 13 | Hub & bushing assembly | 2 | S600640 | S600640 | S600640 | S600640 | S600640 | S600640 | S600640 | S600640 |
| 15 | Lock handle assembly | 1 | S280109 | S280109 | S280109 | S280109 | S280109 | S280109 | S280109 | S280109 |
| 20 | Screw, 5/16-18 x 5/8" | 8 | S2-52 | S2-52 | S2-52 | S2-52 | S2-52 | S2-52 | S2-52 | S2-52 |
| 21 | Nut, 5/16-18 | 8 | 300107 | 300107 | 300107 | 300107 | 300107 | 300107 | 300107 | 300107 |
| 22 | Cross brace | 2 | 263121-2 | 263121-2 | 263121-2 | 263121-2 | 263121-3 | 263121-3 | 263121-3 | 263121-3 |
| 24 | Screw, 1/4-20 x 5/8" | 6 | S2-42 | S2-42 | S2-42 | S2-42 | S2-42 | S2-42 | S2-42 | S2-42 |
| 25 | Drive motor | 1 | 260428 | 260429 | 260428 | 260429 | 260428 | 260429 | 260428 | 260429 |
| 26 | Gear, motor | 1 | 260436 | 260408 | 260436 | 260408 | 260436 | 260408 | 260436 | 260408 |
| 27 | Bracket, motor | 1 | 260405 | 260433 | 260405 | 260433 | 260405 | 260433 | 260405 | 260433 |
| 28 | Screw 5/16-18 x 5/8" | 4 | S2-52 | S2-52 | S2-52 | S2-52 | S2-52 | S2-52 | S2-52 | S2-52 |
| 29 | Lock nut 5/16-18 | 12 | S85-7 | S85-7 | S85-7 | S85-7 | S85-7 | S85-7 | S85-7 | S85-7 |
| 30 | Washer | 7 | 300039 | 300039 | 300039 | 300039 | 300039 | 300039 | 300039 | 300039 |
| 31 | Screw 5/16-18 x 5/8" | 3 | S317-31 | S317-31 | S317-31 | S317-31 | S317-31 | S317-31 | S317-31 | S317-31 |
| 32 | Collar | 1 | 602688 | 602688 | 602688 | 602688 | 602688 | 602688 | 602688 | 602688 |

Series 30000 Air Motor Driven Reels

| ITEM | DESCRIPTION | QTY. | AA32122 L6A | AA32122 M6A | AA32128 L6A | AA32128 M6A | AA33106 L4A | AA33106 L6A | AA33106 M4A | AA33106 M6A |
|------|------------------------|------|-------------|-------------|-------------|-------------|-------------|-------------|-------------|-------------|
| 1 | Swivel assembly | 1 | S600888-1 | S602033 | S600888-1 | S602033 | S602026 | S602026 | S602026 | S602026 |
| 2 | Screw, 5/16-12 x 5/8" | 6 | S317-31 | S317-31 | S317-31 | S317-31 | S317-31 | S317-31 | S317-31 | S317-31 |
| 3 | Side frame | 2 | 260403 | 260403 | 260403 | 260403 | 260403 | 260403 | 260403 | 260403 |
| 5 | Nut, 5/16-18 | 8 | S85-7 | S85-7 | S85-7 | S85-7 | S85-7 | S85-7 | S85-7 | S85-7 |
| 6 | Spool flange | 2 | S260399-3 | S260399-3 | S260399-3 | S260399-3 | S260399-3 | S260399-3 | S260399-3 | S260399-3 |
| 7 | Snap ring | 4 | 300007 | 300007 | 300007 | 300007 | 300007 | 300007 | 300007 | 300007 |
| 8 | Inlet assembly | 1 | 600327-2 | 600327-2 | 600327-2 | 600327-2 | 600327-2 | 600327-2 | 600327-2 | 600327-2 |
| 9 | O-ring | 1 | S211-120 | S211-120 | S211-120 | S211-120 | S211-120 | S211-120 | S211-120 | S211-120 |
| 10 | Screw, 5/16-18 x 3/4" | 4 | S7-51 | S7-51 | S7-51 | S7-51 | S7-51 | S7-51 | S7-51 | S7-51 |
| 11 | Tie rod | 4 | 260402-400 | 260402-400 | 260402-500 | 260402-500 | 260402-100 | 260402-100 | 260402-100 | 260402-100 |
| 12 | Spacer | 4 | 260401-4 | 260401-4 | 260401-5 | 260401-5 | 260401-1 | 260401-1 | 260401-1 | 260401-1 |
| 13 | Hub & bushing assembly | 2 | S600640 | S600640 | S600640 | S600640 | S600640 | S600640 | S600640 | S600640 |
| 15 | Lock handle assembly | 1 | S280109 | S280109 | S280109 | S280109 | S280109 | S280109 | S280109 | S280109 |
| 20 | Screw, 5/16-18 x 5/8" | 8 | S2-52 | S2-52 | S2-52 | S2-52 | S2-52 | S2-52 | S2-52 | S2-52 |
| 21 | Nut, 5/16-18 | 8 | 300107 | 300107 | 300107 | 300107 | 300107 | 300107 | 300107 | 300107 |
| 22 | Cross brace | 2 | 263121-4 | 263121-4 | 263121-5 | 263121-5 | 263121-1 | 263121-1 | 263121-1 | 263121-1 |
| 24 | Screw, 1/4-20 x 5/8" | 6 | S2-42 | S2-42 | S2-42 | S2-42 | S2-42 | S2-42 | S2-42 | S2-42 |
| 25 | Drive motor | 1 | 260429 | 260429 | 260429 | 260429 | 260428 | 260429 | 260428 | 260429 |
| 26 | Gear, motor | 1 | 260408 | 260408 | 260408 | 260408 | 260436 | 260408 | 260436 | 260408 |
| 27 | Bracket, motor | 1 | 260433 | 260433 | 260433 | 260433 | 260405 | 260433 | 260405 | 260433 |
| 28 | Screw 5/16-18 x 5/8" | 4 | S2-52 | S2-52 | S2-52 | S2-52 | S2-52 | S2-52 | S2-52 | S2-52 |
| 29 | Lock nut 5/16-18 | 12 | S85-7 | S85-7 | S85-7 | S85-7 | S85-7 | S85-7 | S85-7 | S85-7 |
| 30 | Washer | 7 | 300039 | 300039 | 300039 | 300039 | 300039 | 300039 | 300039 | 300039 |
| 31 | Screw 5/16-18 x 5/8" | 3 | S317-31 | S317-31 | S317-31 | S317-31 | S317-31 | S317-31 | S317-31 | S317-31 |
| 32 | Collar | 1 | 602688 | 602688 | 602688 | 602688 | 602688 | 602688 | 602688 | 602688 |

| ITEM | DESCRIPTION | QTY. | AA33112 L4A | AA33112 L6A | AA33112 M4A | AA33112 M6A | AA33118 L4A | AA33118 L6A | AA33118 M4A | AA33118 M6A |
|------|------------------------|------|-------------|-------------|-------------|-------------|-------------|-------------|-------------|-------------|
| 1 | Swivel assembly | 1 | S602026 | S602026 | S602026 | S602026 | S602026 | S602026 | S602026 | S602026 |
| 2 | Screw, 5/16-12 x 5/8" | 6 | S317-31 | S317-31 | S317-31 | S317-31 | S317-31 | S317-31 | S317-31 | S317-31 |
| 3 | Side frame | 2 | 260403 | 260403 | 260403 | 260403 | 260403 | 260403 | 260403 | 260403 |
| 5 | Nut, 5/16-18 | 8 | S85-7 | S85-7 | S85-7 | S85-7 | S85-7 | S85-7 | S85-7 | S85-7 |
| 6 | Spool flange | 2 | S260399-3 | S260399-3 | S260399-3 | S260399-3 | S260399-3 | S260399-3 | S260399-3 | S260399-3 |
| 7 | Snap ring | 4 | 300007 | 300007 | 300007 | 300007 | 300007 | 300007 | 300007 | 300007 |
| 8 | Inlet assembly | 1 | 600327-2 | 600327-2 | 600327-2 | 600327-2 | 600327-2 | 600327-2 | 600327-2 | 600327-2 |
| 9 | O-ring | 1 | S211-120 | S211-120 | S211-120 | S211-120 | S211-120 | S211-120 | S211-120 | S211-120 |
| 10 | Screw, 5/16-18 x 3/4" | 4 | S7-51 | S7-51 | S7-51 | S7-51 | S7-51 | S7-51 | S7-51 | S7-51 |
| 11 | Tie rod | 4 | 260402-200 | 260402-200 | 260402-200 | 260402-200 | 260402-300 | 260402-200 | 260402-300 | 260402-200 |
| 12 | Spacer | 4 | 260401-2 | 260401-2 | 260401-2 | 260401-2 | S260401-3 | 260401-2 | S260401-3 | 260401-2 |
| 13 | Hub & bushing assembly | 2 | S600640 | S600640 | S600640 | S600640 | S600640 | S600640 | S600640 | S600640 |
| 15 | Lock handle assembly | 1 | S280109 | S280109 | S280109 | S280109 | S280109 | S280109 | S280109 | S280109 |
| 20 | Screw, 5/16-18 x 5/8" | 8 | S2-52 | S2-52 | S2-52 | S2-52 | S2-52 | S2-52 | S2-52 | S2-52 |
| 21 | Nut, 5/16-18 | 8 | 300107 | 300107 | 300107 | 300107 | 300107 | 300107 | 300107 | 300107 |
| 22 | Cross brace | 2 | 263121-2 | 263121-2 | 263121-2 | 263121-2 | 263121-3 | 263121-2 | 263121-3 | 263121-2 |
| 24 | Screw, 1/4-20 x 5/8" | 6 | S2-42 | S2-42 | S2-42 | S2-42 | S2-42 | S2-42 | S2-42 | S2-42 |
| 25 | Drive motor | 1 | 260428 | 260429 | 260428 | 260429 | 260428 | 260429 | 260428 | 260429 |
| 26 | Gear, motor | 1 | 260436 | S260408 | 260436 | S260408 | 260436 | S260408 | 260436 | S260408 |
| 27 | Bracket, motor | 1 | 260405 | 260433 | 260405 | 260433 | 260405 | 260433 | 260405 | 260433 |
| 28 | Screw 5/16-18 x 5/8" | 4 | S2-52 | S2-52 | S2-52 | S2-52 | S2-52 | S2-52 | S2-52 | S2-52 |
| 29 | Lock nut 5/16-18 | 12 | S85-7 | S85-7 | S85-7 | S85-7 | S85-7 | S85-7 | S85-7 | S85-7 |
| 30 | Washer | 7 | 300039 | 300039 | 300039 | 300039 | 300039 | 300039 | 300039 | 300039 |
| 31 | Screw 5/16-18 x 5/8" | 3 | S317-31 | S346-55 | S317-31 | S346-55 | S317-31 | S346-55 | S317-31 | S346-55 |
| 32 | Collar | 1 | 602688 | 602688 | 602688 | 602688 | 602688 | 602688 | 602688 | 602688 |

Series 30000 Air Motor Driven Reels

| ITEM | DESCRIPTION | QTY. | AA33122 L4A | AA33122 L6A | AA33122 M4A | AA33128 L6A | AA33128 M6A |
|------|------------------------|------|----------------|----------------|----------------|----------------|----------------|
| 1 | Swivel assembly | 1 | S602026 | S602026 | S602026 | S602026 | S602026 |
| 2 | Screw, 5/16-12 x 5/8" | 6 | S317-31 | S317-31 | S317-31 | S317-31 | S317-31 |
| 3 | Side frame | 2 | 260403 | 260403 | 260403 | 260403 | 260403 |
| 5 | Nut, 5/16-18 | 8 | S85-7 | S85-7 | S85-7 | S85-7 | S85-7 |
| 6 | Spool flange | 2 | S260399-3 | S260399-3 | S260399-3 | S260399-3 | S260399-3 |
| 7 | Snap ring | 4 | 300007 | 300007 | 300007 | 300007 | 300007 |
| 8 | Inlet assembly | 1 | 600327-2 | 600327-2 | 600327-2 | 600327-2 | 600327-2 |
| 9 | O-ring | 1 | S211-120 | S211-120 | S211-120 | S211-120 | S211-120 |
| 10 | Screw, 5/16-18 x 3/4" | 4 | S7-51 | S7-51 | S7-51 | S7-51 | S7-51 |
| 11 | Tie rod | 4 | 260402-400 | 260402-400 | 260402-400 | 260402-500 | 260402-500 |
| 12 | Spacer | 4 | 260401-4 | 260401-4 | 260401-4 | 260401-5 | 260401-5 |
| 13 | Hub & bushing assembly | 2 | S600640 | S600640 | S600640 | S600640 | S600640 |
| 15 | Lock handle assembly | 1 | S280109 | S280109 | S280109 | S280109 | S280109 |
| 20 | Screw, 5/16-18 x 5/8" | 8 | S2-52 | S2-52 | S2-52 | S2-52 | S2-52 |
| 21 | Nut, 5/16-18 | 8 | 300107 | 300107 | 300107 | 300107 | 300107 |
| 22 | Cross brace | 2 | 263121-4 | 263121-4 | 263121-4 | 263121-5 | 263121-5 |
| 24 | Screw, 1/4-20 x 5/8" | 6 | S2-42 | S2-42 | S2-42 | S2-42 | S2-42 |
| 25 | Drive motor | 1 | 260428 | 260429 | 260428 | 260429 | 260429 |
| 26 | Gear, motor | 1 | 260436 | 260408 | 260436 | 260408 | 260408 |
| 27 | Bracket, motor | 1 | 260405 | 260433 | 260405 | 260433 | 260433 |
| 28 | Screw 5/16-18 x 5/8" | 4 | S2-52 | S2-52 | S2-52 | S2-52 | S2-52 |
| 29 | Lock nut 5/16-18 | 12 | S85-7 | S85-7 | S85-7 | S85-7 | S85-7 |
| 30 | Washer | 7 | 300039 | 300039 | 300039 | 300039 | 300039 |
| 31 | Screw 5/16-18 x 5/8" | 3 | S317-31 | S317-31 | S317-31 | S317-31 | S317-31 |
| 32 | Collar | 1 | 602688 | 602688 | 602688 | 602688 | 602688 |