

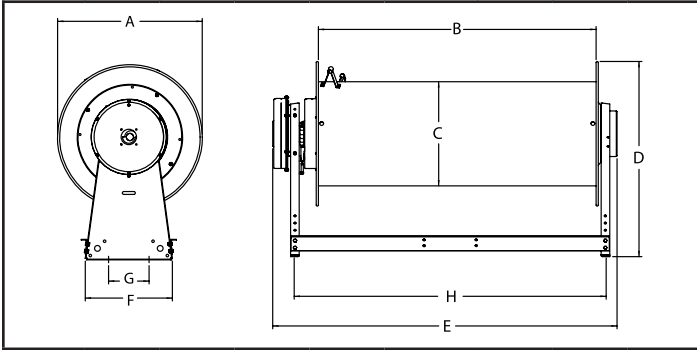
# Operating Instructions

## Spring Driven Exhaust Hose Reels

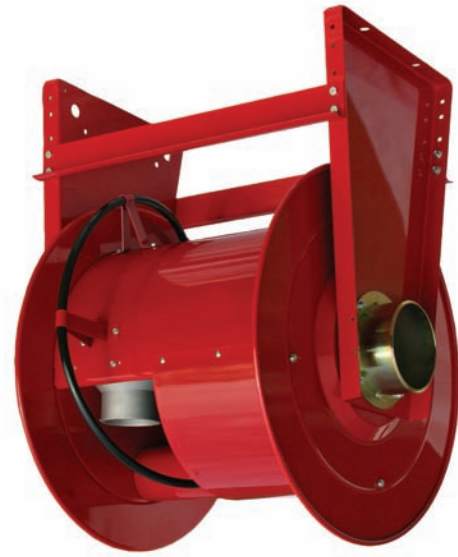
3.5" Outlet Hose V316	4" Outlet Hose V419 V428 V432	5" Outlet Hose V519 V528 V532	6" Outlet Hose V619 V628 V632
--------------------------	--	--	--

### Dimensions

	A	B	C	D	E	F	G	H
<b>VX16</b>	20"	16"	16"	23"	24 3/4"	14"	7"	22"
<b>VX19</b>	25"	19"	18"	31"	27 3/4"	14"	7"	25"
<b>VX28</b>	25"	28"	18"	31"	36 3/4"	14"	7"	34"
<b>VX32</b>	25"	32"	18"	31"	40 3/4"	14"	7"	38"



Four 9/16" diameter x 3/4" mounting slots



### Connecting the Hoses

1. Turn reel until spring is tight. Back off three turns, then latch.
2. Position input hose to input adapter (2). Secure into place with hose clamp (3).
3. Position output hose to output adapter (4). Secure into place with hose clamp (5).
4. Release latch and wind hose onto reel.

### Adjustments

**WARNING:** Use extreme caution; reel under tension. Avoid releasing latch mechanism.

If necessary, adjust spring tension on reel by adding or removing wraps of hose from spool, one wrap at a time, until desired tension is obtained. Add wraps to increase tension. Remove wraps to decrease tension.

**CAUTION:** When adding wraps of hose, be careful not to exceed the winding mechanism's spring capacity. Add just enough wraps of hose to achieve the desired tension. Damage to the winding mechanism will result if spring is over-tensioned.

### Safety

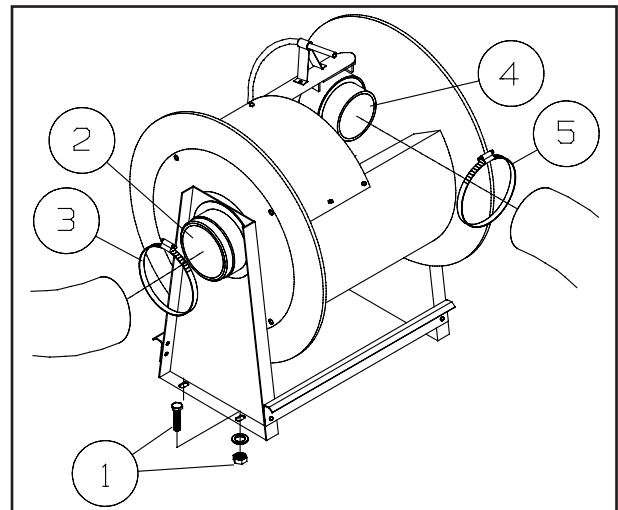
Personal injury and/or equipment damage may result if proper safety precautions are not observed.

- Ensure that reel is properly installed before connecting input and output hoses.
- Ensure that working pressure and temperature do not exceed rating of reel.
- Be aware of machinery and personnel in work area.
- If a leak occurs in the hose or reel, remove from service immediately.
- A high tension spring assembly is contained within the reel. Exercise extreme caution.
- If reel ceases to unwind or rewind, remove from service immediately. Do not pull or jerk on hose!
- Other than replacing the hoses, refer all other repairs only to an authorized service person or directly to Reelcraft. Failure to do so may void the warranty.

### Mounting

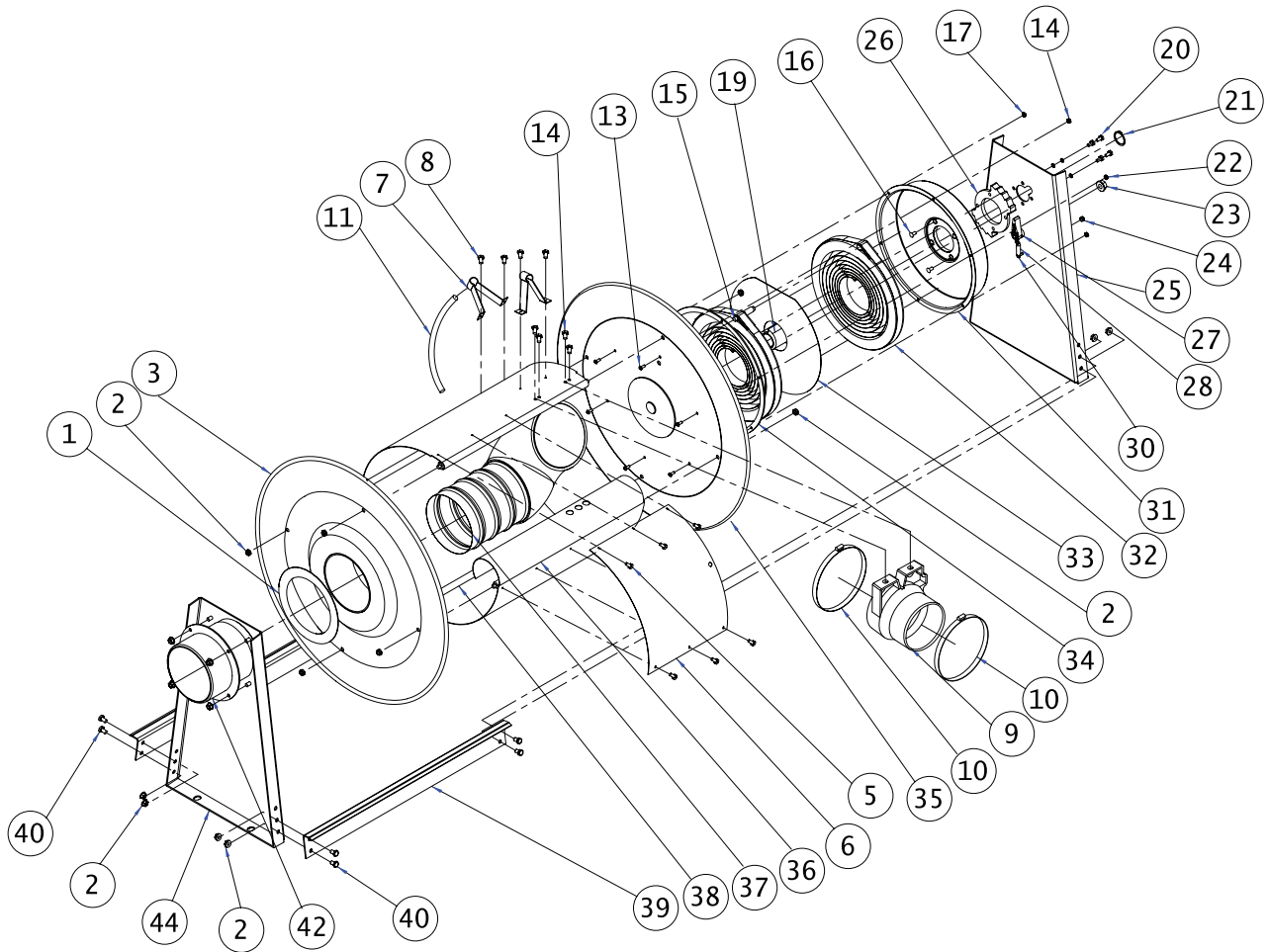
1. Position reel on floor, wall, or ceiling. Secure into place using four (customer supplied) bolts (1).

### Installation Instructions



Form# 571-691 Rev: 3/2017

# Spring Driven Exhaust Hose Reels



ITEM	Part #	QTY	Description	ITEM	Part #	QTY	Description
1	260166	1	Washer, Plastic	22	902016	4	Washer, Split Lock
2	300107	12	Nut, Lock (Whiz) 5/16-18 Zinc	23	S280-8	1	Nut, Hex Flange 1/2-20
5	S285-24	6	Screw, Self Tapping 10-3/8"	24	S82-15	1	Nut, Nyloc 10-32 x 3/8"
7	260178	2	Support, Guide	26	260164	1	Ratchet, Latch
8	S282-88	4	Screw, Self Drilling #10 x 1/2"	27	S600018	1	Latch Pawl Assembly
10	260186	4	Clamp Hose	28	S260067	1	Spring, Latch
11	260177-54	1	Tube, Guide	30	S393-2	1	10-32 Shoulder Screw
13	300001	6	Screw, Machine 10-32 x 3/8"	31	260169	1	Spring Case
14	S294-27	7	Screw, Self Tapping #10 x 1/2"	32	S260069	2	Drive Spring Assembly
15	260174	1	Stud, Spring Case	33	S600045	1	Spacer, Spring
16	S239-97	4	Rivet	34	260165	1	Gasket
17	300011	6	Nut, Hex Lock 10-32	40	S2-51	8	Screw, Hex Cap 5/16-18 x 1/2"
19	S600984	1	Arbor, Spring	42	600312	1	Adapter Assembly
20	S56-41	4	Screw, Hex 1/4-20 x 1/2" GR.5		600138	1	Bumper Stop
21	300007	1	Ring, Snap				

ITEM	Description	# Req.	V316	V419	V519	V619	V428	V528	V628	V432	V532	V632
3	Flange Assembly (left)	1	602292	600317	600317	600317	600317	600317	600317	600317	600317	600317
6	Support, Hose	1	262283	260344	260344	260344	260748	260748	260748	261669	261669	261669
9	Reducer	1	None	260803	260804	260805	260803	260804	260805	260803	260804	260805
25	Base (right)	1	262281	260746	260746	260746	260746	260746	260746	260746	260746	260746
35	Flange Assembly	1	602291	600986	600986	600986	600986	600986	600986	600986	600986	600986
36	Spacer, Sheave	1	262282	260173	260173	260173	260739	260739	260739	260772-L	260772-L	260772-L
37	Tube, Connecting	1	260759-1	260759-1	260759-1	260759-1	260759-1	260759-1	260759-1	260759-2	260759-2	260759-2
38	Rod, Tie	4	326468-16-1	260402-600	260402-600	260402-600	260402-700	260402-700	260402-700	260402-800	260402-800	260402-800
39	Brace, Cross	2	262387-2	262387-3	262387-3	262387-3	262387-4	262387-4	262387-4	262387-5	262387-5	262387-5
44	Base Assembly	1	602290	600314	600314	600314	600314	600314	600314	600314	600314	600314