

Operating Instructions

Series E9000 Spring Driven Hose Reels

High Pressure Model Numbers:

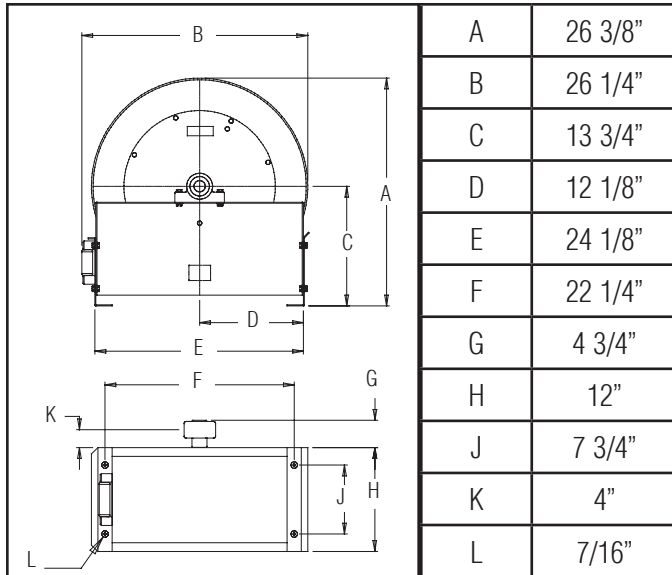
[E9100_OHP](#)

[E9150_OHP](#)

[E9175_OHP](#)



Dimensions



Four 7/16" diameter mounting holes

SAFETY

1. Do not use reel at higher pressures or temperatures than listed on the back of this bulletin.
2. Remove all spring tension before beginning disassembly process.
3. Reel spring motor case is permanently sealed. Any attempt to remove the spring motor may cause serious injury.

INSTALLATION:

The swivel union is packed separately in the reel carton, use teflon tape to assure a satisfactory seal. A flexible hose connection must be used between the hose reel inlet and the source of supply to prevent possible misalignment and binding. Non flexible connections will void the warranty, pressure rating of inlet hose must be equal to or more than the pressure rating of the reel. Consult Reelcraft for proper spring when installing reels above 16 ft.

LUBRICATION:

Hose reel spring and bearings are factory lubricated and require no further lubrication.

REPLACING HOSE:

1. Wind spool flange clockwise-facing swivel-until spring is tight.
2. Back off three turns and latch.
3. Insert hose through roller guide.
4. Connect hose fitting to female outlet ell.

ADJUSTMENTS:

To adjust spring tension, add or remove wraps of hose from the spool, one wrap at a time until desired tension is obtained.

REPAIRS:

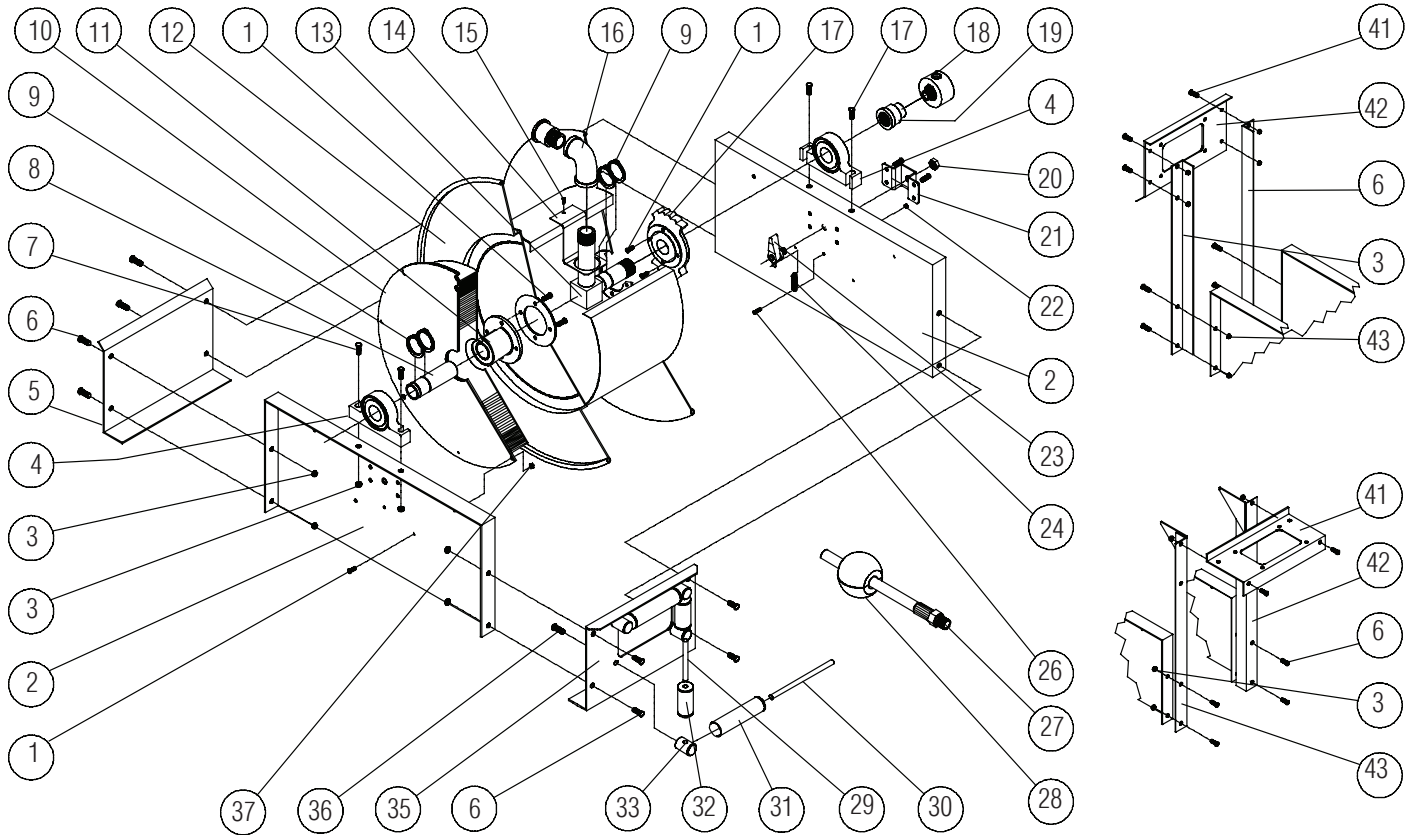
Extensive repairs should be performed only by an authorized serviceman or factory to avoid damage which may void your warranty. Remove all spring tension before beginning disassembly process.

MODIFICATION:

Hose latching mechanism can be removed for constant tension applications.

Form# 615-193 Rev: 8/2019

Series E9000 Spring Driven Hose Reels



Item #	Part #	# Req	Description	Item #	Part #	# Req	Description	Item #	Part #	# Req	Description
1	S2-41	16	1/4-20 x 1/2" hex screw	15	S32-136	1	#10 x 3/8" self tap screw	31	262436-5.468	2	Guide roller
2	270009	2	Side frame	16	S257-26	1	Swivel union	32	262436-2.968	2	Guide roller
3	S281-6	12	3/8-16 hex flange nut	17	260889	1	Latch ratchet	33	S270014	4	Guide roller post
4	S600416	2	Pillow block	18	S602033	1	Swivel assembly	35	270011	1	Hose guide roller plate
5	270012	1	End frame support	19	S168-3	1	Reducer	36	S2-51	4	5/16-18 x 1/2" hex screw
6	S44-2	8	3/8-16 x 5/8" machine screw	20	S280-8	1	1/2-20 hex flang nut	37	S281-4	8	1/4-20 hex nut
7	S44-8	4	3/8-16 x 1 3/4" screw	21	260934	1	Latch bracket	38	270044	1	Guide roller plate SW
8	270899	1	Support shaft	22	S82-15	1	10-32 x 3/8" nyloc nut	39	270042	1	SW support bracket
9	S140-34	6	Snap ring	23	S600454	1	Latch pawl assembly	40	270042	1	SW support bracket
10	600413-1	1	Spring & case assembly	24	S260067	1	Latch spring	41	270044	1	Guide roller plate TW
11	260888	1	Spring arbor	26	S393-2	1	10-32 shoulder screw	42	263190	1	TW support bracket
12	600415	1	Spool assembly	29	S270016	2	Guide roller pin - long	43	263189	1	TW support bracket
13	260894	8	Inlet tube assembly	30	S270015	2	Guide roller pin - short				
14	270029	1	Hose outlet support								

Item #	Description	# Req	E9100 OHP	E9150 OHP	E9175 OHP
27	Hose assembly	1	None	S19-260044	S18-260044
28	Bumper stop assembly	1	None	S602762	S602762
--	Hose ID and length	--	None	3/8" x 50'	3/8" x 75'
--	Working pressure	--	5000 PSI	4800 PSI	4800 PSI
--	Max. temperature	--	210 °F	210 °F	210 °F