

Operating Instructions

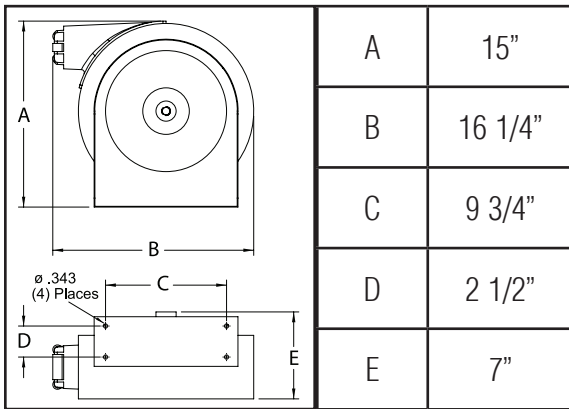
Series 5000 Spring Driven Hose Reels

Low and Medium Pressure Model Numbers:

A5800 ELP A5800 EMP
A5825 ELP A5825 EMP



Dimensions



SAFETY

1. Do not use reel at higher pressures or temperatures than listed on the back of this bulletin.
2. Remove all spring tension before beginning disassembly process.

INSTALLATION:

A flexible hose connection must be used between the hose reel inlet and the source of supply to prevent possible misalignment and binding.

MOUNTING:

The hose reel is equipped with a universal mounting bracket so that it can be mounted on the floor, wall or ceiling; whichever place is convenient. The hose guide arm can be moved to the position desired by removing the 1/4-20 hex nuts (4) fastening the hose guide enclosure to the reel back cover. Shift the hose guide enclosure to the desired position and replace the 1/4-20 hex nuts. **NOTE:** For proper installation in wall mount applications, ensure reel is mounted with inlet on the right as you are facing the reel. Failing to do so could cause latching issues.

LUBRICATION:

Hose reel spring and bearings are factory lubricated and require no further lubrication.

REPLACING HOSE:

1. Remove 1/4-20 hex nuts (4) which fasten the hose guide enclosure to the reel back cover and pull off the enclosure.
2. Wind spool flange clockwise-facing swivel-until spring is tight.
3. Back off three turns and latch.
4. Insert hose through roller guide.
5. Connect hose fitting to swivel joint and secure hose with clamps.

ADJUSTMENTS:

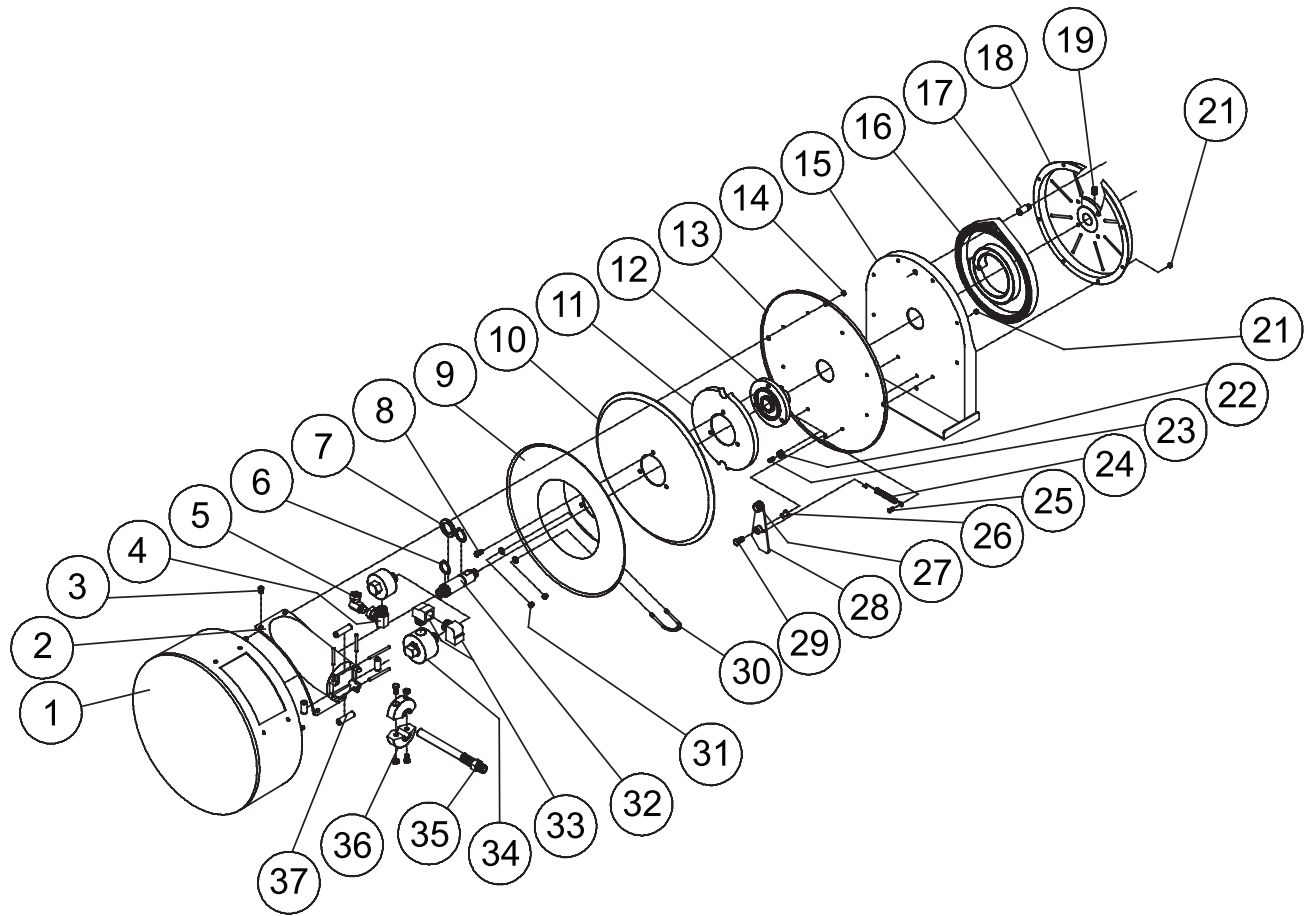
To adjust spring tension, add or remove wraps of hose from the spool, one wrap at a time until desired tension is obtained.

REPAIRS:

Extensive repairs should be performed only by an authorized serviceman or factory to avoid damage which may void your warranty. Remove all spring tension before beginning disassembly process.

Form# 905-897 Rev: 3/2018

Series 5000 Spring Driven Hose Reels



Item #	Part #	# Req.	Description	Item #	Part #	# Req.	Description	Item #	Part #	# Req.	Description
1	500102	1	Case and Cover Assembly	13	500004	1	Reel Cover	24	S400018	1	Latch Spring
2	HR2012	1	Hose Guide Assembly	14	300070	4	1/4-20 Nyloc Nut	25	300002	7	10-32 x 1/2" Screw
3	300001	4	10-32 x 3/8" Screw	15	500101	1	Base Assembly	26	S400012	1	Latch Bushing
6	300031	2	1" Snap Ring	16	S505740	1	Drive Spring Assembly	27	400020	1	O-ring
7	300034	4	Spacing Washer	17	S261360	1	Spring Case Stud	28	S400109	1	Latch Plate Assembly
8	S295-102	3	1/4-10 x 5/8" Screw	18	S500103	1	Spring Case Assembly	29	300035	1	10-32 x 1" Screw
9	260022	1	Sheave Flange	19	300006	1	3/8-16 x 1/2" Set Screw	30	3-117440	1	U-bolt Hose Clamp
10	500006	1	Sheave Disk	21	S82-15	8	10-32 x 3/8" Nyloc Nut	31	261650-1	2	1/4-20 Nyloc Nut
11	S500019	1	Latch Cam	22	S400021	1	Latch Bumper	32	602305	1	Main Shaft
12	S260648	1	Spring Arbor	23	S32-136	1	10-24 x 3/8" Screw	37	S260019	1	Guide Roller and Pin Kit

Item #	Description	# Req.	A5800 ELP	A5800 EMP	A5825 ELP	A5825 EMP
4	90° Street Ell	1	None	S257-26	None	S257-26
5	90° Street Ell	1	None	260749	None	260749
33	90° Street Ell	1	300010	None	300010	None
34	Swivel Assembly	1	S600887-1	S600887-1	S600595-1	S600595-1
35	Hose Assembly	1	None	None	601020-25	21-260043
36	Bumper Stop Assembly	1	None	None	2-HR1004-3	2-HR1004-3
Hose I.D. and Length			None	1/2' x 25'	1/2" x 16'	1/2" x 25'
Reel Inlet Connection			3/8" M.P.T.	3/8" M.P.T.	3/8" M.P.T.	3/8" M.P.T.
Max. Operating Pressure			500 P.S.I.	3250 P.S.I.	300 P.S.I.	3250 P.S.I.
Max. Operating Temperature			210 °F	210 °F	150 °F	210 °F