

# Operating Instructions

## Series 5000 Spring Driven Hose Reels

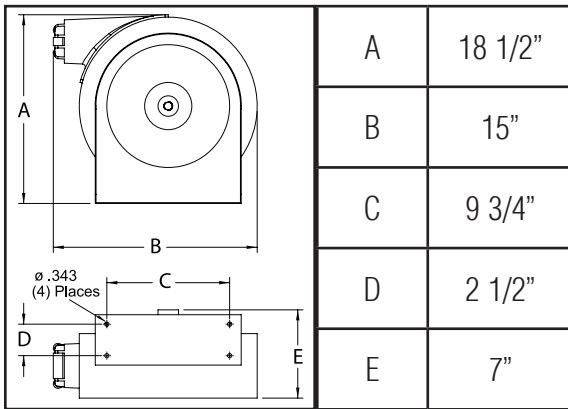
Low Pressure Model Numbers:

5600 ELS      5600 ELS-S

### SAFETY

1. Do not use reel at higher pressures or temperatures than listed on the back of this bulletin.
2. Remove all spring tension before beginning disassembly process.

### Dimensions



### RECOMMENDED MAINTENANCE

It is recommended to disassemble, inspect and re-lube the swivel every 3 months. Disassemble, wipe off and inspect the swivel body and stem for any evidence of galling on the metal-to-metal contact (bearing) areas. If evidence of galling is found, the swivel should be replaced. If the swivel shows no evidence of galling, re-lube the swivel with anti-seize lubricant on the bearing areas of the swivel components and reassemble the components. The swivel should be pressure tested to insure the O-rings are seated properly and that there is no evidence of leaking. Attach the swivel assembly to the reel and test the hose reel assembly for leaks at the threaded connections. It is up to the customer to insure that the lubricant used is compatible with the media they are running through the hose reel assembly.

### INSTALLATION:

A flexible hose connection must be used between the hose reel inlet and the source of supply to prevent possible misalignment and binding.

### MOUNTING:

The hose reel is equipped with a universal mounting bracket so that it can be mounted on the floor, wall or ceiling; whichever place is convenient. The hose guide arm can be moved to the position desired by removing the 1/4-20 hex nuts (4) fastening the hose guide enclosure to the reel back cover. Shift the hose guide enclosure to the desired position and replace the 1/4-20 hex nuts. **NOTE:** For proper installation in wall mount applications, ensure reel is mounted with inlet on the right as you are facing the reel. Failing to do so could cause latching issues.

### LUBRICATION:

Hose reel spring and bearings are factory lubricated and require no further lubrication.

### REPLACING HOSE:

1. Remove 1/4-20 hex nuts (4) which fasten the hose guide enclosure to the reel back cover and pull off the enclosure.
2. Wind spool flange clockwise-facing swivel-until spring is tight.
3. Back off three turns and latch.
4. Insert hose through roller guide.
5. Connect hose fitting to swivel joint and secure hose with clamps.

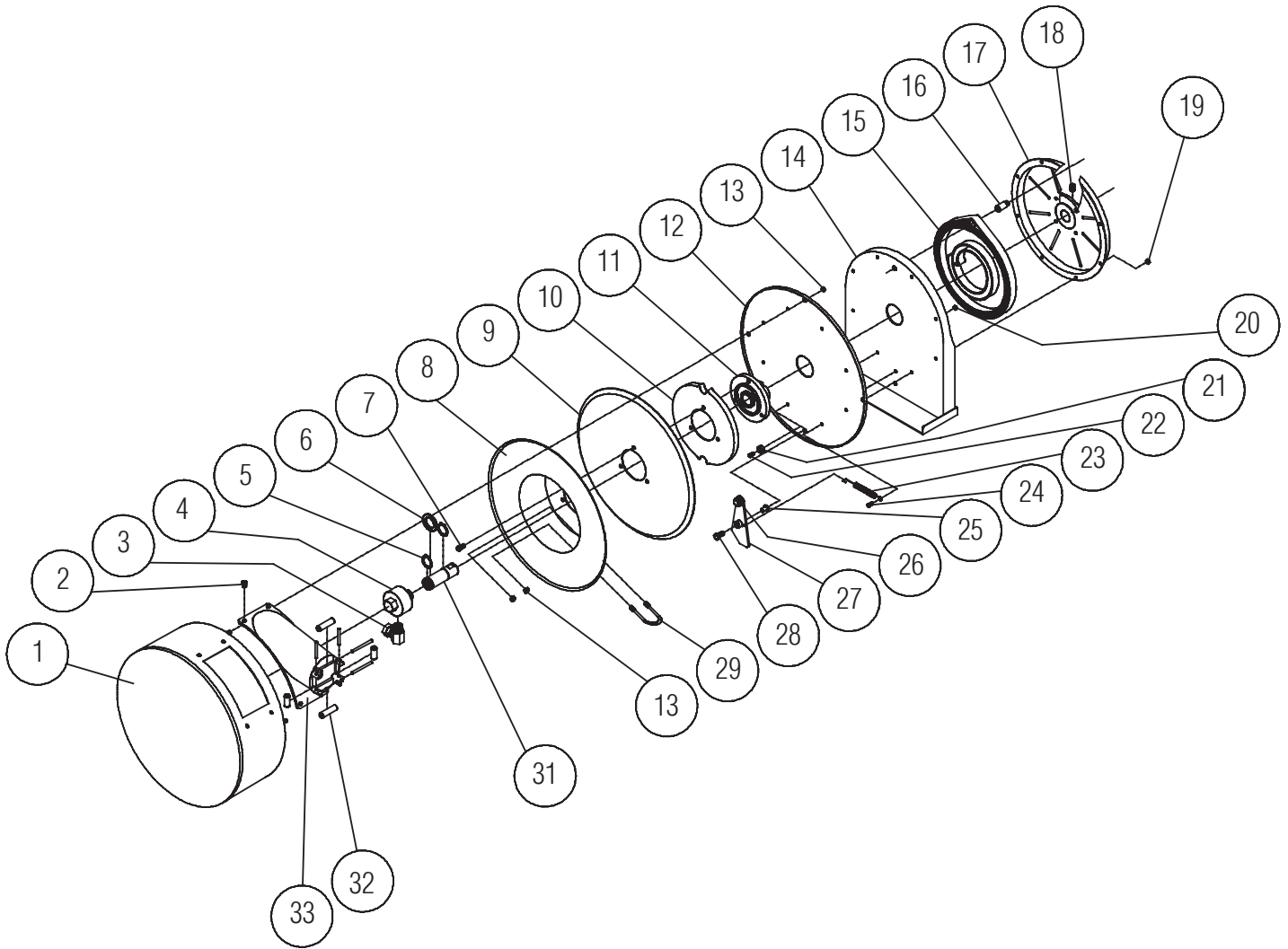
### ADJUSTMENTS:

To adjust spring tension, add or remove wraps of hose from the spool, one wrap at a time until desired tension is obtained.

### REPAIRS:

Extensive repairs should be performed only by an authorized serviceman or factory to avoid damage which may void your warranty. Remove all spring tension before beginning disassembly process.

Form# 935-198 Rev: 3/2018



Item #	Part #	# Req.	Description	Item #	Part #	# Req.	Description	Item #	Part #	# Req.	Description
1	600658	1	Case & Cover Assembly	11	S260648	1	Spring Arbor	23	S400018	1	Latch Spring
2	S46-105	4	10-32 x 3/8" Screw	12	261323	1	Reel Cover	24	S46-107	7	10-32 x 1/2" Screw
3	S160-3	1	90° Street Ell	13	S96-13	6	1/4-20 Nyloc Nut	25	S260225	1	Latch Bushing
4	600093-2	1	Swivel Assembly**	14	600056	1	Base Assembly	26	400020	7	O'Ring
4	S602681-2	1	Swivel Assembly	15	S504240	1	Drive Spring Assembly	27	S600062	1	Latch Plate Assembly
5	S147-25	2	1" Snap Ring	16	261361	1	Spring Case Stud	28	300035	1	10-32 x 1" Mach. Screw
6	260238	4	Spacing Washer	18	S47-66	1	3/8-16 x 1/2" Set Screw	29	260242	1	U-Bolt
7	S324-102	3	1/4-10 x 5/8" Hex Screw	19	260239	7	10-32 Hex Lock Nut	31	260227	1	Main Shaft**
8	260221	1	Sheave Flange	20	S95-22	1	10-32 x 3/8" Nyloc Nut	31	S262922	1	Main Shaft
9	260223	1	Sheave Disk	21	S400021	1	Latch Bumper	32	S260019	1	Guide Roller Pin Kit
10	260224	1	Latch Cam	22	S332-117	1	10-24 x 3/8" Screw	33	600657	1	Hose Guide Assembly

Item #	Description	# Req.	5600 ELS	5600 ELS-S
17	Spring Case Assembly	1	600061	600061-1

**\*\*Prior to August 2016**  
See online tech bulletin for more information