



OPERATION AND MAINTENANCE MANUAL

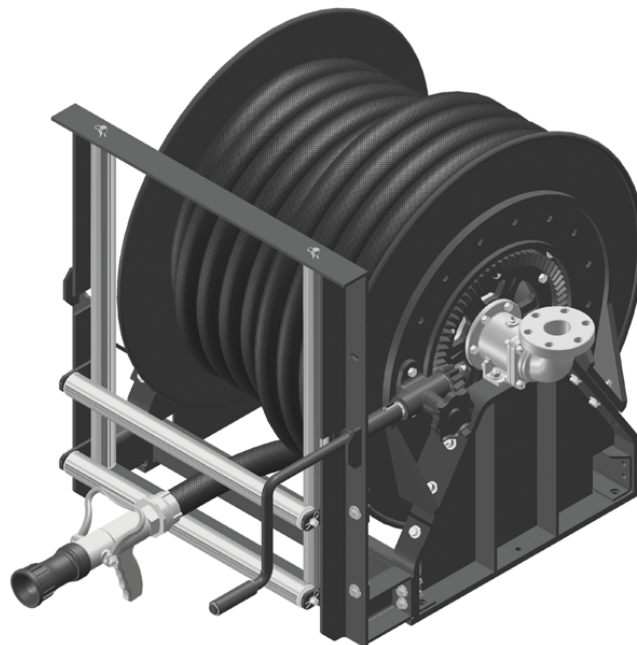
AFFF HOSE REEL ASSEMBLY

MIL-R-24414-II-125 & MIL-R-24414-II-150

REELS BUILT TO MIL-R-24414D:

3600-29-19-15RR
3600-29-19-15RRU
3600-29-19-15ARR
3600-29-19-15ARRU
3600-29-19-15RG
3600-29-19-15RGU
3600-29-19-15ARG
3600-29-19-15ARGU

3600-29-19-15LR
3600-29-19-15LRU
3600-29-19-15ALR
3600-29-19-15ALRU
3600-29-19-15LG
3600-29-19-15LGU
3600-29-19-15ALG
3600-29-19-15ALGU





1.0	Safety summary.....	1
1.1	General safety notices.....	1
1.2	First aid.....	1
2.0	Technical specifications.....	2
2.1	Description of hose reel.....	2
2.2	Description of manufacturer.....	2
2.3	AFFF hose reel assembly identification.....	2
2.4	Characteristics.....	2
2.4.1	General arrangement drawing (see Appendix A).....	2
2.5	Major components of hose reel.....	2
2.5.1	Hose reel part number designation.....	3
2.5.2	Hose reel assembly, MIL-R-24414 (see Appendix B).....	3
2.5.3	Description of major components.....	3
2.5.4	Parts & accessories breakdown (see Appendices C, D & E).....	4
3.0	Pre-inspection.....	4
4.0	Mounting the reel.....	4
4.1	Footprint foundation layout, MIL-R-24414, Type II (see Appendix F).....	4
5.0	Maintenance instructions.....	4
5.1	Periodic maintenance (every 30 days).....	4
5.2	Annual maintenance.....	4
6.0	Certificate of conformance/analysis	4
7.0	Principles of Operation.....	5
7.1	Hose connection.....	5
7.2	Retrieval of hose.....	5
7.3	Deployment of hose.....	5
7.4	Repositioning inlet assembly.....	5
7.5	Repositioning hand crank.....	5
7.6	Repositioning gooseneck.....	5
8.0	Trouble shooting guide.....	6
9.0	Provisioning documentation technical data (see Appendix G).....	6
Appendices:		
Appendix A.....		7
Appendix B.....		8
Appendix C.....		9
Appendix D.....		10
Appendix E.....		11
Appendix F.....		12
Appendix G.....		13

1.0 Safety Summary

1.1 General Safety Notices

The following general safety precautions should be understood and applied during operation and maintenance of equipment covered herein. Should situations arise that are not covered in these general safety precautions, the commanding officer or other authority shall issue orders as deemed necessary to cover the situation.

1. Insure that all maintenance operations comply with the proper safety regulations and procedures.
2. Ensure that any protective guards are properly installed and maintained around rotating parts of machinery.
3. Do not wear loose clothing while working near rotating parts of machinery.
4. Do not make alterations to equipment or components, unless otherwise specified by the manufacturer (Reelcraft Industries, Inc.).
5. Ensure that the area is well ventilated when using cleaning solvents. Avoid prolonged breathing of fumes and solvent contact with skin or eyes.
6. Do not stand or climb on reel. The extra weight may be detrimental to plumbing connections and/or flange and spool.

1.2 First aid

An injury, regardless of severity, should never go unattended. Always seek medical attention early.

2.0 Technical Specifications

2.1 Description of Hose Reel

AFFF hose reel assembly for 125ft or 150ft of 1-1/2 in ID hose as per MIL-R-24414D

2.2 Description of Manufacturer

Reelcraft Industries, Inc.
 2842 E. Business Hwy. 30
 Columbia City, IN 46725
 1-800-444-3134
 www.reelcraft.com

Cage Code: 52173

2.3 AFFF Hose Reel Assembly Identification:

Part Number: 24414-II-125 & 24414-II-150

2.4 Characteristics

Length	: 42-1/4"	
Width	: 32-7/16"	
Height	: 31-1/2"	
Weight	Hose reel ONLY	: 118.0 lbs.
	Hose reel and roller guide	: 173.0 lbs.
	Complete system * shipping weight (commercial)	: 271.3 lbs.
	Complete system * shipping weight (crated)	: 316.3 lbs.
	Complete system * EMPTY	: 231.3 lbs.
	Complete system * FILLED	: 311.5 lbs.

*Complete system includes: hose reel, guide roller, 150' x 1-1/2" hose assembly & nozzle. For models with 125' x 1-1/2" subtract 35lbs. from complete system weight to get actual weight.

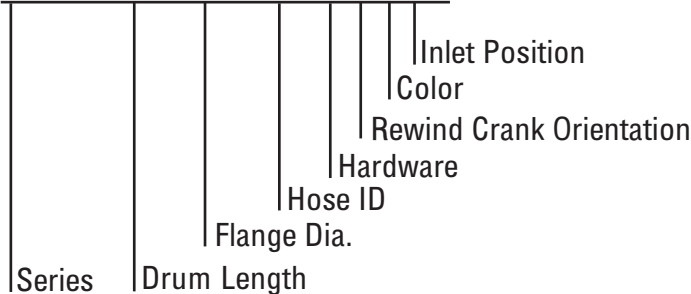
Position of Hose	: Top or bottom wind (specified at time of order)
Position of Inlet	: 2 positions, @ 180 degrees (specified at time of order)
Position of Crank Rewind	: 9 positions, @ 20 degrees (specified at time of order)

2.4.1 General Arrangement Drawing (see Appendix A)

2.5 Major Components of Hose Reel

2.5.1 Reelcraft Hose Reel Part Number Designation

3600-29-19-15ARRU



Nameplates - A 2" X 3" stainless steel name plate may be found on the lower right/left corner of the side frame (or on top plate of guide roller if ordered as parts). It details Model #, Serial #, Mil-Spec. # & Contract # if applicable (see sample).

Stenciling - Stenciling is provided on front tie plate of reels. Unless otherwise specified at time of order it will include supplier Cage Code, supplier part number & Reelcraft Cage Code.

Hardware Codes	
	Carbon Steel (standard)
A	Stainless Steel
Rewind Crank Orientation Codes	
R	Right Hand Inlet
L	Left Hand Inlet
Color Codes	
R	Red
G	Green
Inlet Position Codes	
	Down (standard)
U	Up



2.5.2 Hose reel assembly, MIL-R-24414 (see Appendix B)

2.5.3 Major Components

HOSE REELS	3600-29-19-15RR	right hand rewind, red
	3600-29-19-15RRU	right hand rewind, red, inlet facing up
	3600-29-19-15LR	left hand rewind, red
	3600-29-19-15LRU	left hand rewind, red, inlet facing up
	3600-29-19-15ARR	stainless steel hardware, right hand rewind, red
	3600-29-19-15ARRU	stainless steel hardware, right hand rewind, inlet facing up
	3600-29-19-15ALR	stainless steel hardware, left hand rewind, red
	3600-29-19-15ALRU	stainless steel hardware, left hand rewind, red, inlet facing up
	3600-29-19-15RG	right hand rewind, green
	3600-29-19-15RGU	right hand rewind, green, inlet facing up
	3600-29-19-15LG	left hand rewind, green
	3600-29-19-15LGU	left hand rewind, green, inlet facing up
	3600-29-19-15ARG	stainless steel hardware, right hand rewind, green
	3600-29-19-15ARGU	stainless steel hardware, right hand rewind, green, inlet facing up
	3600-29-19-15ALG	stainless steel hardware, left hand rewind, green
3600-29-19-15ALGU	stainless steel hardware, left hand rewind, green, inlet facing up	
ACCESSORIES	340307BW	red, bottom wind (type II)
	340307ABW	red, stainless steel hardware, bottom wind (type II)
	340307	red, top wind (type II)
	340307A	red, stainless steel hardware, top wind (type II)
	340307GBW	green, bottom wind, green (type II)
	340307AGBW	green, stainless steel hardware, bottom wind (type II)
	340307G	green, top wind (type II)
	340307AG	green, stainless steel hardware, top wind (type II)
	360700-125	1-1/2" X 125' (38m) hose assembly and couplings
	360700-150	1-1/2" X 150' (46m) hose assembly and couplings
	SFL-GN-95	brass nozzle with pistol grip - 95 GPM @ 100 PSI
	SFL-GN-125	brass nozzle with pistol grip - 125 GPM @ 100 PSI

2.5.4. Parts & Accesories Breakdown (see Appendices C, D & E)

3.0 Pre-Inspection

- Step One: Check reel for shipping damage
- Step Two: Unwind hose from reel, check drum for shipping damage and rewind
- Step Three: Insure all parts are supplied as ordered

4.0 Mounting The Reel

Bolt the hose reel securely to a rigid surface. This is important to insure proper alignment and optimal performance.

4.1 Footprint Foundation Layout, MIL-R-24414D, Type II (see Appendix F)

5.0 Maintenance Instructions

5.1 Regular Maintenance (every 30 days):

- 1) Lubricate all grease fittings (including bearings), with good quality general purpose grease especially under continuous service.
- 2) All hardware on the reel should be checked to ensure it is secure and free from defect or damage. Any damaged or missing hardware should be replaced immediately.
- 3) Rollers should be checked to make sure they roll freely.

5.2 Annual Maintenance

Operating Test

- 1) Hose is to be fully unwound from reel and checked for defects.
- 2) Hose reel assembly is pressurized to 175 PSI (hydrostatic)
- 3) Hose is reeled on and off under pressure.
- 4) Check that there has been **NO**:
 - Leakage at any point in the fluid path
 - Bending or wobbling of the frame or drum
 - Binding of the drum

FAILURE TO FOLLOW THESE INSTRUCTIONS MAY VOID WARRANTY

6.0 Certificate of Conformance/ Analysis - Certs are available upon request.

7.0 Principles of Operation

Overview : This hose reel system allows the efficient storage of 125' or 150' of 1-1/2" ID hose and the easy manual deployment/retrieval of the hose. It is designed for use with AFFF and seawater in fire fighting applications.

7.1 Hose Connection

Lay entire hose length out in front of reel with female end facing reel. Carefully thread female hose coupling onto male gooseneck, making sure not to cross thread. Next, tighten hose coupling with wrench. Hose will twist with coupling, be sure to un-twist before winding.

7.2 Retrieval of Hose

The pressure in the hose should be relieved prior to rewinding. The crank is installed, and wound in an counter-clock wise direction to rewind the hose. Care must be taken that the hose does not kink or twist during winding. The hose should be guided to coil in layers, starting on hose connection side winding towards opposite side and then vice versa with the intent to minimize space between wraps. If the hose or nozzle becomes snagged, clear by hand, do not use the pinion crank.

7.3 Deployment of Hose

The operator should first check that the handcrank is not attached to the reel. The hand brake should be loosened to reduce the friction on the pinion rewind. The nozzle and hose can then be pulled off the reel. Care should be taken to ensure that the hose does not coil or kink while being taken off the reel.

7.4 Repositioning Inlet Assembly

Disconnect the inlet from the supply hose. Carefully remove the four (4) nuts and bolts holding the inlet in position. Rotate the inlet to the desired angle (4 positions @ 90 degrees). Replace the four (4) nuts and bolts, making sure they are tightened completely (two (2) wrench sizes required).

7.5 Repositioning Hand Crank

Carefully remove two (2) nuts and bolts holding hand cranking position. Rotate the hand crank to the desired angle (9 positions @ 20 degrees, through 180 degrees). Replace the two (2) nuts and bolts, making sure they are tightened completely (two (2) wrench sizes required).

7.6 Repositioning Gooseneck From Bottom Wind to Top Wind (and vice versa)

Disconnect fire hose from the outlet . Carefully remove the four (4) bolts holding the outlet in position. Rotate the outlet by 180 degrees (two (2) positions @ 180 degrees). Replace the four (4) bolts, making sure they are tightened completely. Next, unbolt the four (4) brackets holding the horizontal roller guides and reconnect the rollers and bracket to the top position holes. Reconnect the fire hose, and wind it back on by rotating the drum counter-clock wise.

8.0 Trouble Shooting Guide

Symptom	Cause and Solution
Difficult to wind or rewind hose.	<ul style="list-style-type: none"> - Hose was improperly wound back on reel, and the hose has overlapped. Untangle the hose. - The hand crank tensioner is fully or partly engaged. Release hand crank tensioner. - Insufficient grease in bearing. Add grease via grease fittings.
Leakage at inlet bearing.	<ul style="list-style-type: none"> - O-ring has failed. Replace O-ring. - The spindle separated from the bearing. Replace O-ring and snap ring.
The drum wobbles.	<ul style="list-style-type: none"> - The bearings are out of alignment. Loosen bearings, align the shaft, and tighten the hardware. - The walls of the drum have been damaged. Straighten if minor, replace drum if severe.
Guide rollers are binding.	<ul style="list-style-type: none"> - The rollers have been bent or bowed. Replace damaged rollers. - Foreign material has become entangled in the ends of the rollers. Remove rollers and clear debris.

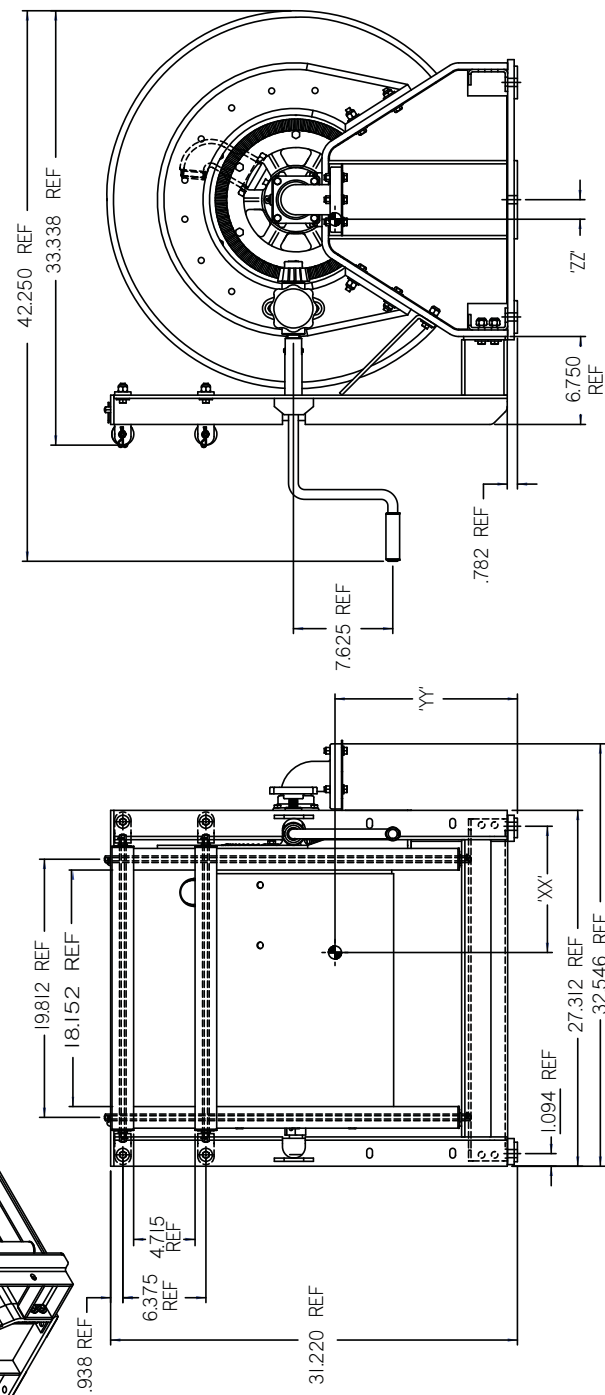
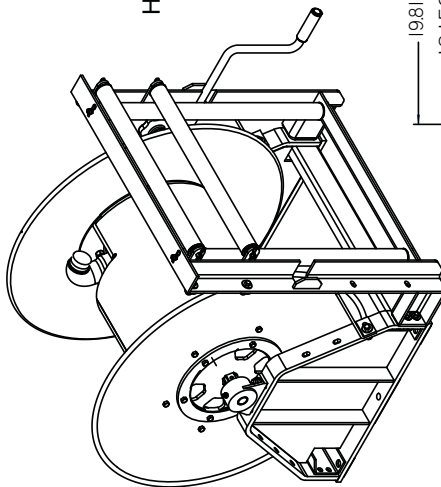
9.0 Provisioning Documentation Technical Data (see Appendix G)

THIS DOCUMENT CONTAINS PROPRIETARY INFORMATION OF REELCRAFT, INC. AND IT SHALL NOT BE DISCLOSED TO OTHERS OR REPRODUCED OR USED FOR OTHERS WITHOUT THE EXPRESS WRITTEN CONSENT OF REELCRAFT, INC.

APPENDIX "A"

MANUAL REWIND HOSE REEL FOR 100' TO 150' X 1-1/2" ID HOSE CONVEYING 125 GPM OF AFFF PER MIL-F-24385 AT 175 PSI
 USE 24414-II-100 FOR 100' OF HOSE, HOSE ASSEMBLY 360700-100
 USE 24414-II-125 FOR 125' OF HOSE, HOSE ASSEMBLY 360700-125
 USE 24414-II-150 FOR 150' OF HOSE, HOSE ASSEMBLY 360700-150

MARKING FOR SHIPMENT PER MIL-STD-129 REQUIRED
 REEL SHALL BE IN ACCORDANCE WITH MIL-R-24414D(SH) LATEST REVISION
 TOLERANCE ±1/16 UNLESS OTHERWISE SPECIFIED
 PROTECT MACHINED CONNECTING SURFACES FROM PAINT AND DURING SHIPPING AND HANDLING
 HOSE REEL TO BE PAINTED RED (11105) "R" OR GREEN (14062) "G" PER FED-STD-595 (3600-29-19-15RRR OR 3600-29-19-15RGR)
 MARKING PER MIL-STD-130 REQUIRED



NOTE:
 -RIGHT HAND TOP WIND SHOWN. FOR RIGHT HAND BOTTOM WIND, ROTATE GOOSNECK 180°.
 -ALL THREADED BOLTS MUST THREAD PAST THE NYLON NUT BY AT LEAST 1 FULL THREAD, BUT NOT MORE THAN 5 FULL THREADS. IF THE BOLT LENGTH DOES NOT MEET THIS REQUIREMENT, SUBSTITUTE WITH A LONGER OR SHORTER BOLT AS NEEDED. MAKE ANY REPLACEMENTS WITH THE SAME MATERIALS AND FINISH. ALL DIMENSIONS MUST BE APPROVED BY THE RESPONSIBLE GOVERNMENT DOCUMENTATION ENGINEER.
 NOT SHOWN FOR CLARITY
 -HOSE ASSEMBLY (360700-100) or (360700-125) or (360700-150)
 -NOZZLE (SFL-GN-125)

WEIGHT TABLE AND CENTER OF GRAVITY				
ITEM	MASS	XX	YY	ZZ
HOSE REEL WITH ROLLER GUIDE ONLY	179 lbs	969 in	938 in	126 in
COMPLETE SYSTEM EMPTY W/ 100' FT.	223 lbs	954 in	913 in	118 in
COMPLETE SYSTEM FLEED W/ 100' FT.	297 lbs	932 in	847 in	114 in
COMPLETE SYSTEM FLEED W/ 125' FT.	369 lbs	924 in	813 in	118 in
COMPLETE SYSTEM FLEED W/ 150' FT.	332 lbs	984 in	813 in	114 in
COMPLETE SYSTEM FLEED W/ 150' FT.	442 lbs	932 in	847 in	114 in



NO. 3600-29-19-15RR w/ 340307
 DATE: 12/04/08
 4-II-100) OR (24414-II-125) OR (24414-II-150)

TITLE: SINGLE AGENT HOSE REEL W/ HOSE GUIDE
 TYPE II, GROUP A

DRAWN BY: BDH	ENG APPROVAL: ELW	MFG APPROVAL: X	DRAWING NOT TO SCALE	CUSTOMER APPROVAL:	LTR AI	DESCRIPTION FOR REFERENCE ONLY	DATE 12/04/08	ECN # 11575
------------------	----------------------	--------------------	----------------------	--------------------	-----------	-----------------------------------	------------------	----------------

Form#
Rev.

THIS DOCUMENT CONTAINS PROPRIETARY INFORMATION OF REELCRAFT IND. INC. AND IT SHALL NOT BE DISCLOSED TO OTHERS OR DUPLICATED OR USED FOR OTHERS WITHOUT THE EXPRESS WRITTEN CONSENT OF REELCRAFT IND. INC.

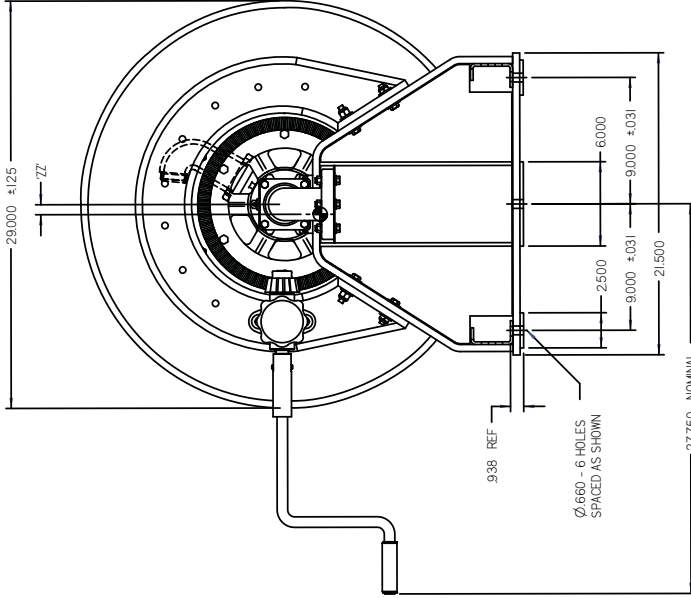
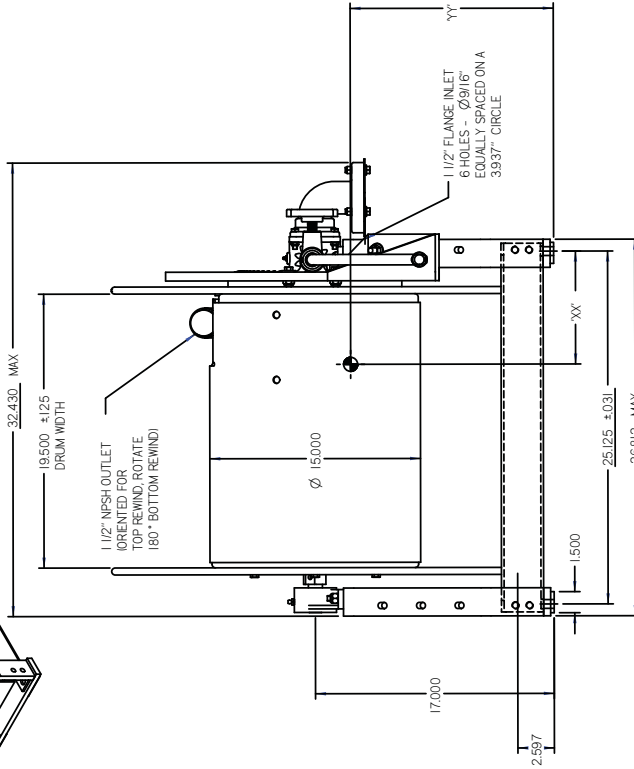
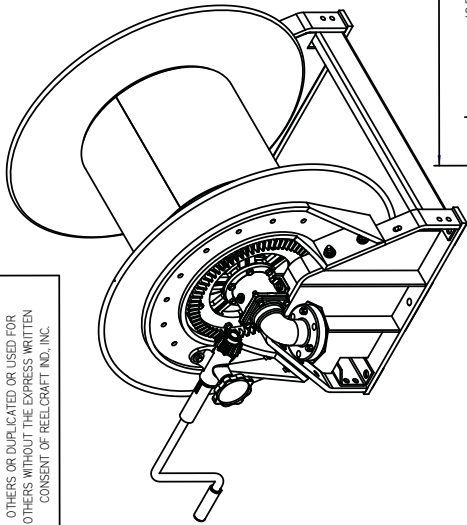
APPENDIX "B"

MANUAL REWIND HOSE REEL FOR 100' TO 150' X 1-1/2" ID HOSE CONVEYING 125 GPM OF AFFP PER MIL-F-24385 AT 175 PSI USE 24414-II-100 FOR 100' OF HOSE; HOSE ASSEMBLY 360700-100 USE 24414-II-125 FOR 125' OF HOSE; HOSE ASSEMBLY 360700-125 USE 24414-II-150 FOR 150' OF HOSE; HOSE ASSEMBLY 360700-150 MARKING FOR SHIPMENT PER MIL-STD-129 REQUIRED

REEL SHALL BE IN ACCORDANCE WITH MIL-R-24414D(SH) LATEST REVISION TOLERANCE ±1/16 UNLESS OTHERWISE SPECIFIED PROTECT MACHINED CONNECTING SURFACES

FROM PAINT AND DURING SHIPPING AND HANDLING

HOSE REEL TO BE PAINTED RED (11105) "R" OR GREEN (14062) "G" PER FED-STD-595 (3600-29-19-15RR OR 3600-29-19-15RG) MARKING PER MIL-STD-130 REQUIRED



NOTE: -RIGHT HAND TOP WIND SHOWN. FOR RIGHT HAND BOTTOM WIND, ROTATE GOOSNECK 180°

-ALL THREADED BOLTS MUST THREAD PAST THE NYLON NUT BY AT LEAST 1 FULL THREAD, BUT NOT MORE THAN 5 FULL THREADS. IF THE BOLT LENGTH DOES NOT MEET THIS REQUIREMENT, SUBSTITUTE WITH A LONGER OR SHORTER BOLT AS NEEDED. MAKE ANY INVENTORY ADJUSTMENTS FOR THIS SUBSTITUTION. ANY DEVIATIONS MUST BE APPROVED BY THE RESPONSIBLE GOVERNMENT DOCUMENTATION ENGINEER.

NOT SHOWN FOR CLARITY
-HOSE ASSEMBLY (360700-100) or (360700-125) or (360700-150)
-NOZZLE (SEL-GN-125)
-HOSE GUIDE ASSEMBLY (340307)

WEIGHT TABLE AND CENTER OF GRAVITY						
ITEM	MASS	XX	YY	ZZ		
HOSE REEL WITHOUT ROLLER GUIDE ONLY	125 lbs	8.04 in	14.47 in	7.1 in		
COMPLETE SYSTEM EMPTY/100 FT.	223 lbs	8.19 in	14.62 in	7.1 in		
COMPLETE SYSTEM FILLED WITH AFFP/100 FT.	297 lbs	8.27 in	14.66 in	7.1 in		
COMPLETE SYSTEM EMPTY/125 FT.	244 lbs	8.19 in	14.62 in	7.1 in		
COMPLETE SYSTEM FILLED WITH AFFP/125 FT.	335 lbs	8.27 in	14.66 in	7.1 in		
COMPLETE SYSTEM EMPTY/150 FT.	278 lbs	8.19 in	14.62 in	7.1 in		
COMPLETE SYSTEM FILLED WITH AFFP/150 FT.	389 lbs	8.27 in	14.66 in	7.1 in		

		DRAWING NO.	3600-29-19-15RR	DATE	6/11/08
		(24414-II-100) OR (24414-II-125) OR (24414-II-150)			
		DRAWING TITLE	SINGLE AGENT HOSE REEL TYPE II, GROUP A		
DRAWN BY:	ENG APPROVAL:	MFG APPROVAL:	DRAWING NOT TO SCALE	CUSTOMER APPROVAL:	
JLB	ELW	DWT			
LTR	DESCRIPTION		DATE	ECN #	
AI	NEW RELEASE		6/11/08	11273SUPP	

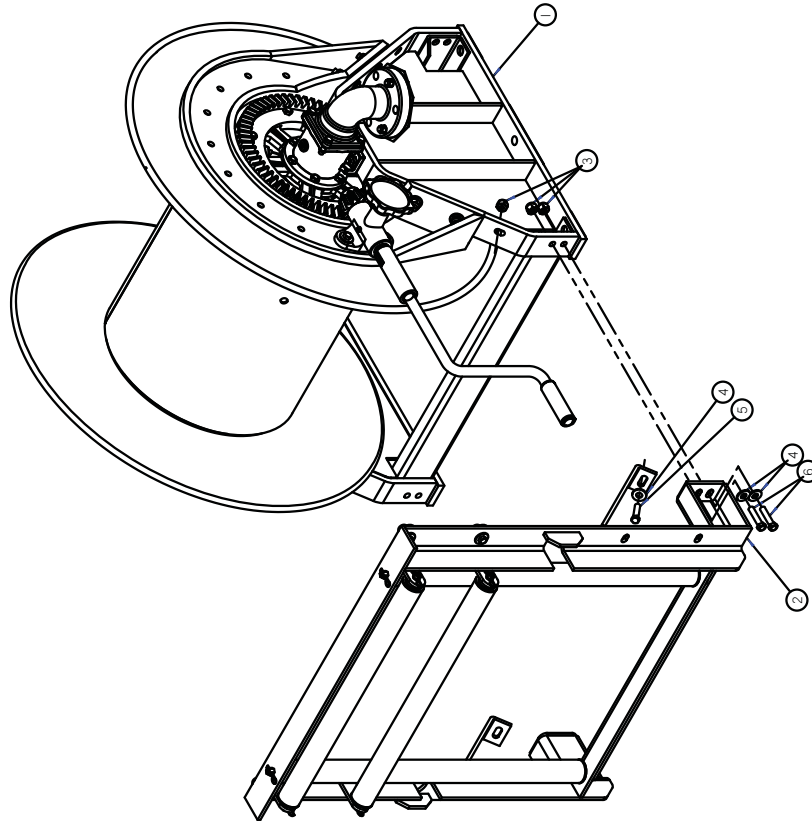


DRAWING NO. 3600-29-19-15RR w/ 340307
 (24414-II-100) OR (24414-II-125) OR (24414-II-150) DATE: 12/04/08

DRAWING TITLE: SINGLE AGENT HOSE REEL W/ HOSE GUIDE
 TYPE II, GROUP A

DRAWN BY: BDH	ENG APPROVAL: ELW	MFG APPROVAL: X	DRAWING NOT TO SCALE	CUSTOMER APPROVAL:	LTR AI	DESCRIPTION FOR REFERENCE ONLY	DATE 12/04/08	ECN # 11575
------------------	----------------------	--------------------	-------------------------	--------------------	-----------	-----------------------------------	------------------	----------------

APPENDIX "C"



REEL ASSEMBLY WITH HOSE GUIDE			QUANTITY
ITEM NUMBER	PART NUMBER	DESCRIPTION	
1	3600-29-19-15RR	SINGLE AGENT HOSE REEL	1
2	340307	HOSE GUIDE ASSEMBLY	1
3	S81-6	NUT NYLOC	6
4	S110-6	WASHER FLAT	6
5	S56-67	HEX CAP SCREW 3/8-16 X 1 1/2"	2
6	S56-68	HEX CAP SCREW 3/8-16 X 1 3/4"	4

THIS DOCUMENT CONTAINS PROPRIETARY INFORMATION OF REELCRAFT INC. AND IT SHALL NOT BE DISCLOSED TO OTHERS OR DUPLICATED OR USED FOR OTHERS WITHOUT THE EXPRESS WRITTEN CONSENT OF REELCRAFT INC. IN.

NOTE:
 -FOR RED PAINT DROP -XX. FOR GREEN PAINT ADD -58 IN PLACE OF -XX
 -ALL THREADED BOLTS MUST THREAD PAST THE NYLON NUT BY AT LEAST 1 FULL THREAD, BUT NOT MORE THAN 5 FULL THREADS. IF THE BOLT LENGTH DOES NOT MEET THIS REQUIREMENT, SUBSTITUTE WITH A LONGER OR SHORTER BOLT AS NEEDED. MAKE ANY INVENTORY ADJUSTMENTS FOR THIS SUBSTITUTION. ANY DEVIATIONS MUST BE APPROVED BY THE RESPONSIBLE GOVERNMENT DOCUMENTATION ENGINEER.

INCLUDED BUT NOT SHOWN:
 -(1) 360600-4 STRAP AND BRACKET ASSEMBLY
 -(2) S353-12 SCREW, TRUSS HEAD 3/8-16 X 1"
 -(2) S37-446 SCREW, SET 3/8-16 X 3/8"

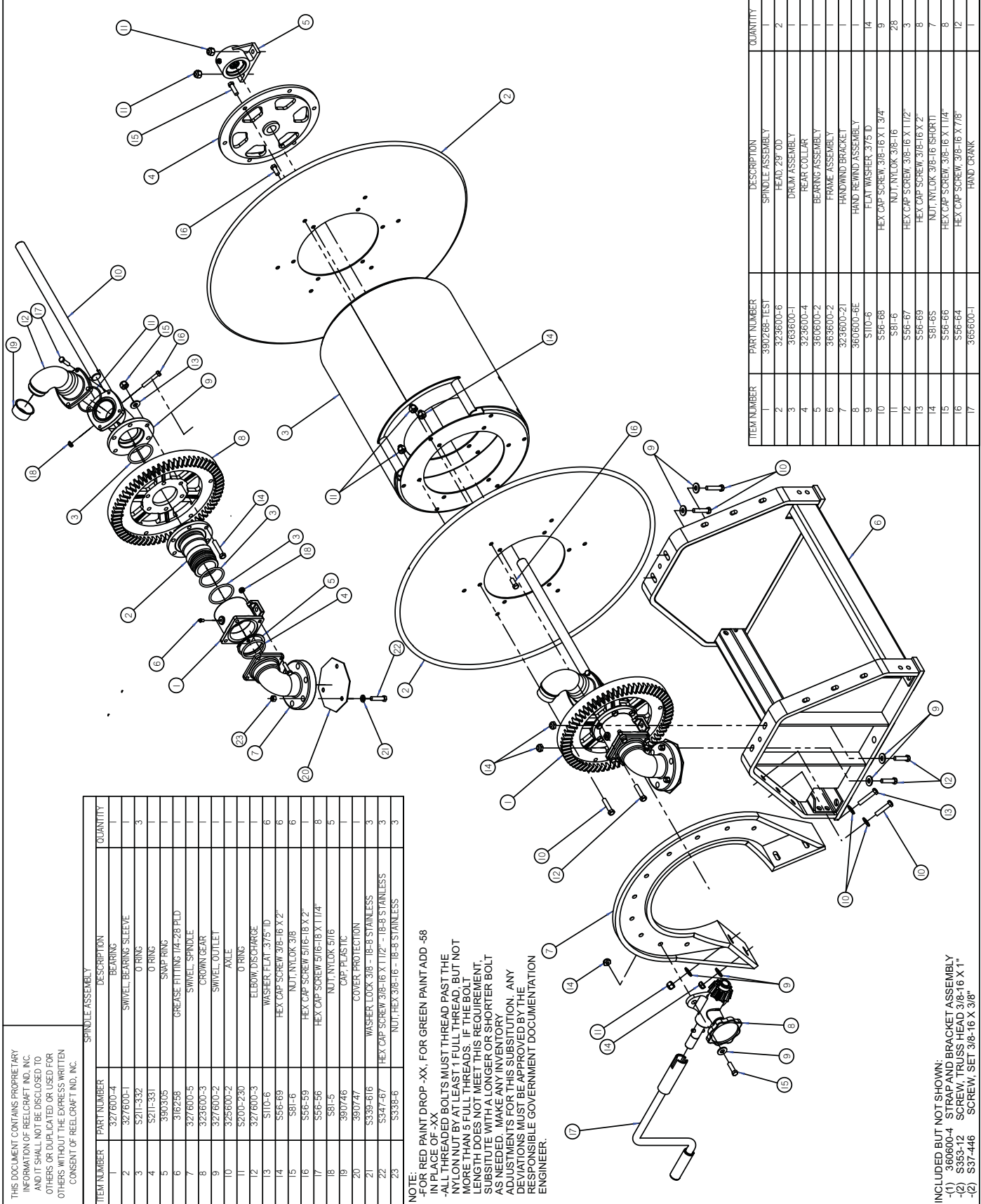


REELCRAFT

DRAWING NO.	3600-29-19-15RR	DATE	6/11/08
(24414-II-100) OR (24414-II-125) OR (24414-II-150)			
DRAWING TITLE: SINGLE AGENT HOSE REEL TYPE II, GROUP A			

DRAWN BY:	ENG APPROVAL:	MFG APPROVAL:	DRAWING NOT TO SCALE	CUSTOMER APPROVAL:	LTR	DESCRIPTION	DATE	ECN #
JLB	ELW	DWT			AI	NEW RELEASE	6/11/08	11273SUPP

APPENDIX "D"



ITEM NUMBER	PART NUMBER	DESCRIPTION	QUANTITY
1	390268-TEST	SPINDLE ASSEMBLY	1
2	323600-6	HEAD, 2.9" OD	2
3	363600-1	DRUM ASSEMBLY	1
4	323600-4	BEAR COIL LAR	1
5	360600-2	BEARING ASSEMBLY	1
6	363600-2	FRAME ASSEMBLY	1
7	323600-21	HAND REWIND ASSEMBLY	1
8	360600-6E	HAND REWIND ASSEMBLY	1
9	S110-6	FLAT WASHER, 3/8" X 1 3/4"	14
10	S56-68	HEX CAP SCREW, 3/8-16 X 1 3/4"	9
11	S81-6	NUT, N/LOCK, 3/8-16	28
12	S66-67	HEX CAP SCREW, 3/8-16 X 1 1/2"	3
13	S66-69	HEX CAP SCREW, 3/8-16 X 2"	8
14	S81-6S	NUT, N/LOCK, 3/8-16 ISFORTI	7
15	S56-66	HEX CAP SCREW, 3/8-16 X 1 1/4"	8
16	S56-64	HEX CAP SCREW, 3/8-16 X 7/8"	12
17	365600-1	HAND CRANK	1

ITEM NUMBER	PART NUMBER	DESCRIPTION	QUANTITY
1	327600-4	BEARING	1
2	327600-1	SWIVEL BEARING SLEEVE	1
3	S211-332	O RING	3
4	S211-331	O RING	3
5	390305	SWAP RING	1
6	316256	GREASE FITTING 1/4-28 PLD	1
7	327600-5	SWIVEL SPINDLE	1
8	323600-3	CROWN GEAR	1
9	327600-2	SWIVEL OUTLET	1
10	325600-2	AXLE	1
11	S200-240	O RING	1
12	327600-3	ELBOW DISCHARGE	1
13	S110-6	WASHER, FLAT, 3/75" ID	6
14	S56-69	HEX CAP SCREW, 3/8-16 X 2"	6
15	S81-6	NUT, N/LOCK, 3/8"	6
16	S56-59	HEX CAP SCREW, 5/16-18 X 2"	1
17	S56-56	HEX CAP SCREW, 5/16-18 X 1 1/4"	8
18	S81-5	NUT, N/LOCK, 5/16"	5
19	390746	CAP PLASTIC	1
20	390747	COVER PROTECTION	1
21	S339-616	WASHER, LOCK, 3/8" - 18-8 STAINLESS	3
22	S347-67	HEX CAP SCREW, 3/8-16 X 1 1/2" - 18-8 STAINLESS	3
23	S338-6	NUT, HEX, 3/8-16 - 18-8 STAINLESS	3

NOTE: RED PAINT DROP -XX, FOR GREEN PAINT ADD -56 IN PLACE OF -XX.
 -ALL THREADED BOLTS MUST BE FULL THREAD, BUT NOT NYLON NUT BY AT LEAST 1 FULL THREAD. IF THE BOLT MORE THAN 5 FULL THREADS, IF THE BOLT LENGTH DOES NOT MEET THIS REQUIREMENT, SUBSTITUTE WITH A LONGER OR SHORTER BOLT AS NEEDED. MAKE ANY INVENTORY ADJUSTMENTS FOR THIS SUBSTITUTION. ANY DEVIATIONS MUST BE APPROVED BY THE RESPONSIBLE GOVERNMENT DOCUMENTATION ENGINEER.

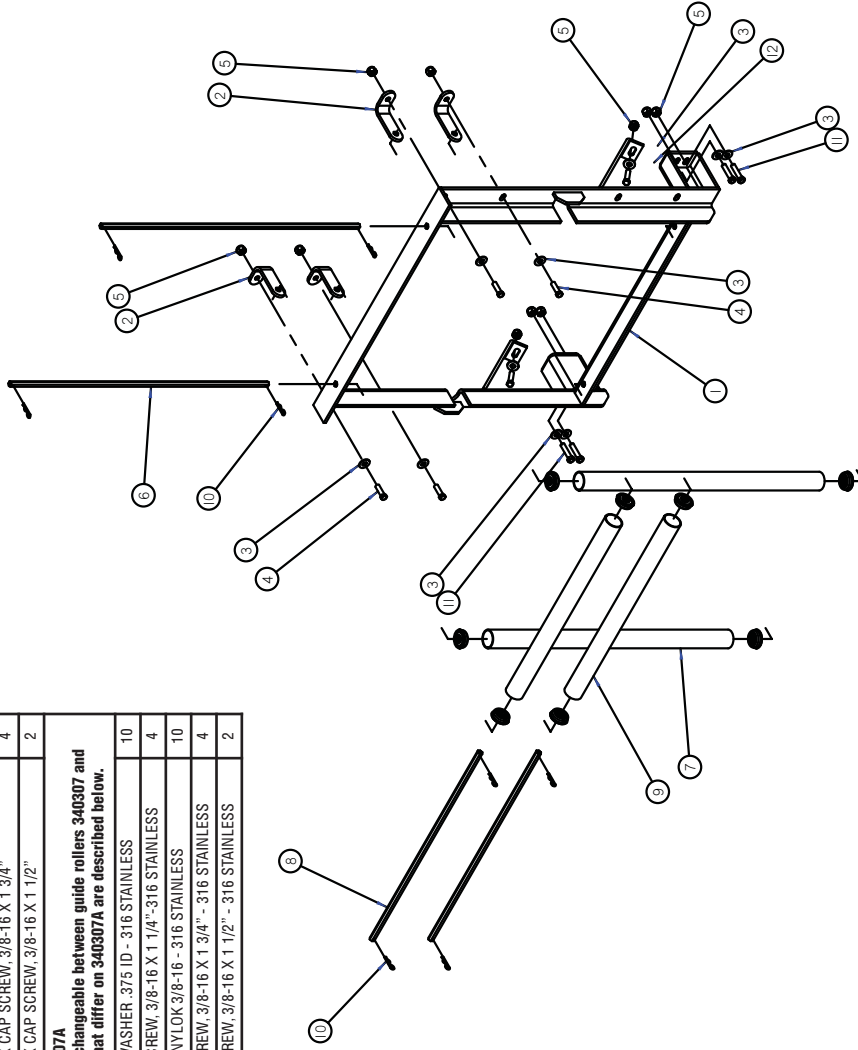
INCLUDED BUT NOT SHOWN:
 -(1) 360600-4 STRAP AND BRACKET ASSEMBLY
 -(2) S353-12 SCREW, TRUSS HEAD 3/8-16 X 1"
 -(3) S37-446 SCREW, SET, 3/8-16 X 3/8"

APPENDIX "E"

ITEM #	PART #	DESCRIPTION	QTY.
1	366001	FRAME ASSEMBLY	1
2	366002	ROLLER BRACKET	4
3	S110-6	FLAT WASHER .375 ID	10
4	S56-66	HEX CAP SCREW, 3/8-16 X 1 1/4"	4
5	S81-6	NUT, NYLOK 3/8-16	10
6	326307-9	HEX SHAFT	2
7	366006	ROLLER ASSEMBLY	2
8	326307-10	HEX SHAFT	2
9	366007	ROLLER ASSEMBLY	2
10	G00680123	HAIR PIN	8
11	S56-68	HEX CAP SCREW, 3/8-16 X 1 3/4"	4
12	S56-67	HEX CAP SCREW, 3/8-16 X 1 1/2"	2

NOTE: Components 1, 2, 6, 7, 8, 9 and 10 interchangeable between guide rollers 340307 and 340307A. The stainless replacement parts that differ on 340307A are described below.

ITEM #	PART #	DESCRIPTION	QTY.
3	S357-6	FLAT WASHER .375 ID - 316 STAINLESS	10
4	S359-66	HEX CAP SCREW, 3/8-16 X 1 1/4" - 316 STAINLESS	4
5	S355-6	NUT, NYLOK 3/8-16 - 316 STAINLESS	10
11	S359-68	HEX CAP SCREW, 3/8-16 X 1 3/4" - 316 STAINLESS	4
12	S359-67	HEX CAP SCREW, 3/8-16 X 1 1/2" - 316 STAINLESS	2



TYPE II ROLLER GUIDE

THIS MATERIAL IS OWNED BY REELCRAFT. IT IS NOT TO BE REPRODUCED OR DISTRIBUTED WITHOUT WRITTEN PERMISSION.

NOTED	UNLESS OTHERWISE NOTED, ALL DIMENSIONS ARE TO BE TAKEN TO THE CENTERLINE UNLESS OTHERWISE SPECIFIED. DIMENSIONS IN PARENTHESES ARE FOR INFORMATION ONLY. DIMENSIONS IN SQUARE BRACKETS ARE FOR INFORMATION ONLY. DIMENSIONS IN ITALIC FONT ARE FOR INFORMATION ONLY. DIMENSIONS IN BOLD FONT ARE FOR INFORMATION ONLY.
NOTED	UNLESS OTHERWISE NOTED, ALL DIMENSIONS ARE TO BE TAKEN TO THE CENTERLINE UNLESS OTHERWISE SPECIFIED. DIMENSIONS IN PARENTHESES ARE FOR INFORMATION ONLY. DIMENSIONS IN SQUARE BRACKETS ARE FOR INFORMATION ONLY. DIMENSIONS IN ITALIC FONT ARE FOR INFORMATION ONLY. DIMENSIONS IN BOLD FONT ARE FOR INFORMATION ONLY.
NONE	UNLESS OTHERWISE NOTED, ALL DIMENSIONS ARE TO BE TAKEN TO THE CENTERLINE UNLESS OTHERWISE SPECIFIED. DIMENSIONS IN PARENTHESES ARE FOR INFORMATION ONLY. DIMENSIONS IN SQUARE BRACKETS ARE FOR INFORMATION ONLY. DIMENSIONS IN ITALIC FONT ARE FOR INFORMATION ONLY. DIMENSIONS IN BOLD FONT ARE FOR INFORMATION ONLY.
55 LBS	UNLESS OTHERWISE NOTED, ALL DIMENSIONS ARE TO BE TAKEN TO THE CENTERLINE UNLESS OTHERWISE SPECIFIED. DIMENSIONS IN PARENTHESES ARE FOR INFORMATION ONLY. DIMENSIONS IN SQUARE BRACKETS ARE FOR INFORMATION ONLY. DIMENSIONS IN ITALIC FONT ARE FOR INFORMATION ONLY. DIMENSIONS IN BOLD FONT ARE FOR INFORMATION ONLY.

NOTED	UNLESS OTHERWISE NOTED, ALL DIMENSIONS ARE TO BE TAKEN TO THE CENTERLINE UNLESS OTHERWISE SPECIFIED. DIMENSIONS IN PARENTHESES ARE FOR INFORMATION ONLY. DIMENSIONS IN SQUARE BRACKETS ARE FOR INFORMATION ONLY. DIMENSIONS IN ITALIC FONT ARE FOR INFORMATION ONLY. DIMENSIONS IN BOLD FONT ARE FOR INFORMATION ONLY.
NOTED	UNLESS OTHERWISE NOTED, ALL DIMENSIONS ARE TO BE TAKEN TO THE CENTERLINE UNLESS OTHERWISE SPECIFIED. DIMENSIONS IN PARENTHESES ARE FOR INFORMATION ONLY. DIMENSIONS IN SQUARE BRACKETS ARE FOR INFORMATION ONLY. DIMENSIONS IN ITALIC FONT ARE FOR INFORMATION ONLY. DIMENSIONS IN BOLD FONT ARE FOR INFORMATION ONLY.
NONE	UNLESS OTHERWISE NOTED, ALL DIMENSIONS ARE TO BE TAKEN TO THE CENTERLINE UNLESS OTHERWISE SPECIFIED. DIMENSIONS IN PARENTHESES ARE FOR INFORMATION ONLY. DIMENSIONS IN SQUARE BRACKETS ARE FOR INFORMATION ONLY. DIMENSIONS IN ITALIC FONT ARE FOR INFORMATION ONLY. DIMENSIONS IN BOLD FONT ARE FOR INFORMATION ONLY.
55 LBS	UNLESS OTHERWISE NOTED, ALL DIMENSIONS ARE TO BE TAKEN TO THE CENTERLINE UNLESS OTHERWISE SPECIFIED. DIMENSIONS IN PARENTHESES ARE FOR INFORMATION ONLY. DIMENSIONS IN SQUARE BRACKETS ARE FOR INFORMATION ONLY. DIMENSIONS IN ITALIC FONT ARE FOR INFORMATION ONLY. DIMENSIONS IN BOLD FONT ARE FOR INFORMATION ONLY.

NOTE:
 -ALL THREADED BOLTS MUST THREAD PAST THE NYLON NUT BY AT LEAST 1 FULL THREAD, BUT NOT MORE THAN 5 FULL THREADS. IF THE BOLT LENGTH DOES NOT MEET THIS REQUIREMENT, SUBSTITUTE WITH A LONGER OR SHORTER BOLT AS NEEDED. MAKE ANY INVENTORY ADJUSTMENTS FOR THIS SUBSTITUTION. ANY DEVIATIONS MUST BE APPROVED BY THE RESPONSIBLE GOVERNMENT DOCUMENTATION ENGINEER.

340307XX

LTR	DESCRIPTION	DATE	ECN
B1	REVISED AND REDRAWN	6/4/08	11273

1	2	3	4	5	6	7	8	9	10	11	12	13	14	15	16
---	---	---	---	---	---	---	---	---	----	----	----	----	----	----	----

340307XX

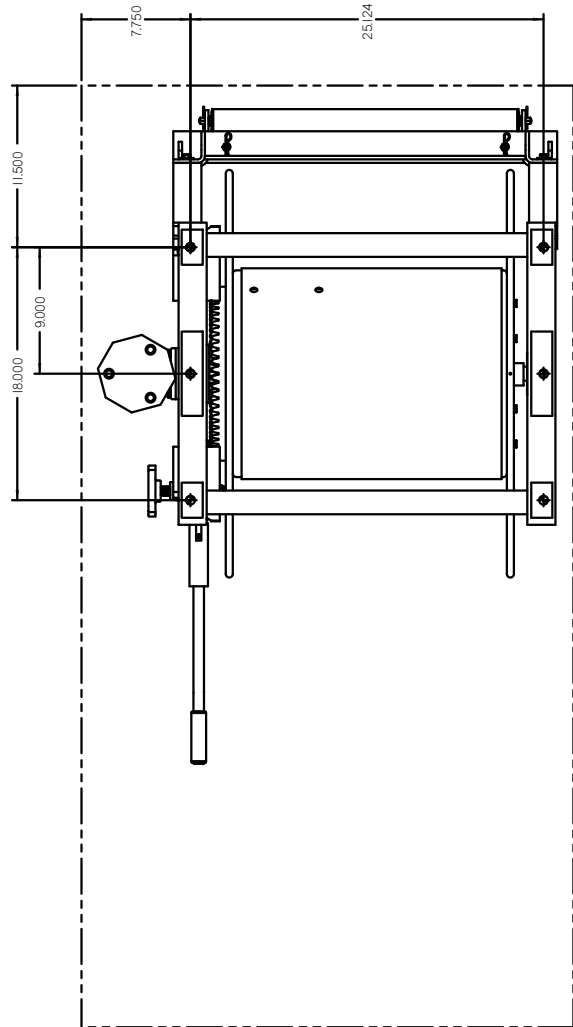
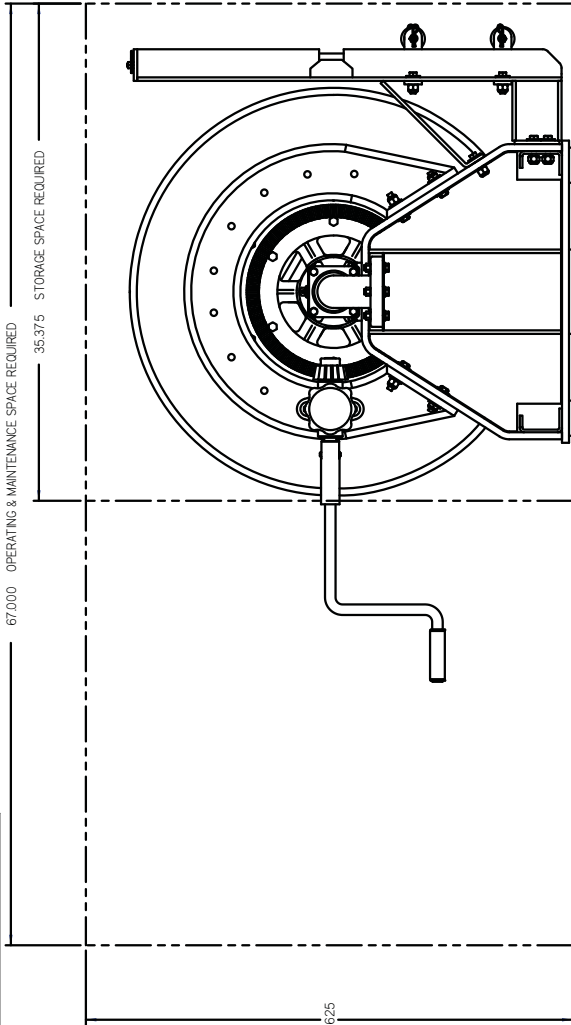
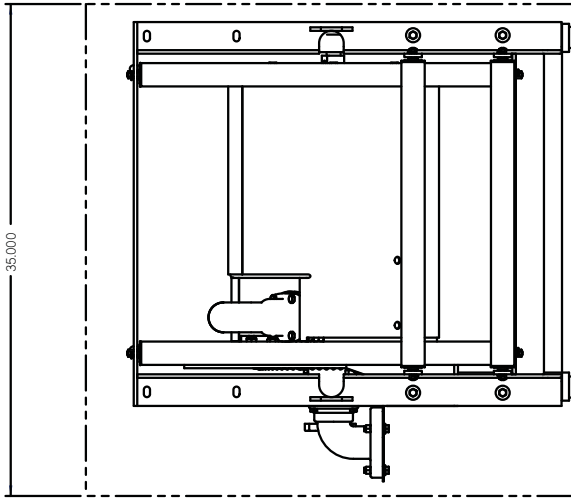


DRAWING NO. 3600-29-19-15RR w/ 340307BW
 [24414-II-100] OR [24414-II-125] OR [24414-II-150] DATE: 12/04/08

DRAWING TITLE: SINGLE AGENT HOSE REEL W/ HOSE GUIDE
 TYPE II, GROUP A

DRAWN BY: BDH	ENG APPROVAL: ELW	MFG APPROVAL: X	DRAWING NOT TO SCALE	CUSTOMER APPROVAL:	LTR AI	DESCRIPTION FOR REFERENCE ONLY	DATE 12/04/08	ECN # 11575
------------------	----------------------	--------------------	-------------------------	--------------------	-----------	-----------------------------------	------------------	----------------

APPENDIX "F"



THIS DOCUMENT CONTAINS PROPRIETARY INFORMATION OF REELCRAFT IND. INC. AND IT SHALL NOT BE DISCLOSED TO OTHERS OR DUPLICATED OR USED FOR OTHERS WITHOUT THE EXPRESS WRITTEN CONSENT OF REELCRAFT IND. INC.

NOTE:

1. DRAWING REPRESENTS FOOT PRINT LAYOUT IN MIL-R-24414 Rev. D.



APPENDIX "G"

Provisioning Documentation Technical Data

The following is an on-board spare parts list recommended for vessels carrying 1-10 AFFF reels. For larger vessels, carrying more than 10 reels, it is recommended that these ratios be maintained (round all fractions of parts up).

Manufacturer's Part Number	Description	Onboard spare parts proposal	Onshore spare parts proposal	Required Storage Space
323600-3	Crown Gear		1	350x350x50mm
327600-1	Swivel, Bearing Sleeve		1	130x130x150mm
327600-4	Bearing		1	110x110x100mm
390305	Snap Ring, 2.934" O.D. X .094 TK (2.55 I.D.)	2	4	70x70x2mm
S211-332	O-Ring, 2-3/8" X 2-3/4" X 3/16"	6	12	65x65x5mm
S211-331	O-Ring, 2-1/4" X 2-5/8" X 3/16"	2	4	65x65x5mm
S200-230	O-Ring, 2-1/2" X 2-3/4" X 1/8"	2	4	140x140x130mm
327600-2	Swivel, Outlet 2"		1	100x130x150mm
327600-3	Elbow, Discharge		1	120x90x45mm
360600-2	Bearing Assembly		1	140x140x130mm
327600-5	Swivel, Spindle		1	125x125x250mm
360600-6E	Hand Rewind Assembly		1	440x220x30mm
365600-1	Hand Crank		1	250x100x20mm
360600-4	Bracket & Nylon Strap		1	145x235x245mm
SFL-GN-95	Nozzle w/ Pistol Grip - 90 GPM @ 100 PSI		1	245x230x140mm
SFL-GN-125	Nozzle w/ Pistol Grip - 125 GPM @ 100 PSI		1	245x230x140mm
360700-125	Hose Assembly 1-1/2" X 125' (38m) w/ Couplings		1	1300x1300x200mm
360700-150	Hose Assembly 1-1/2" X 150' (46m) w/ Couplings		1	1300x1300x200mm