



L 4545 123 3

L 3000 / L 4000 / L 5000 / L 7000 / L 70000

# Power and Light Cord Reels

Individually powder-coated steel components provide maximum protection from premature corrosion

Drive mechanism is enclosed for protection against the environment.

Declutching arbor virtually eliminates possibility of spring damage due to reverse winding of reel spool.

Robotically welded heavy gauge steel frame.

Easy to Mount - Attaches to most structurally sound surfaces. Edges are curved for safety. Note: Swing brackets should be used if cords are pulled at more than 45°.

Reelcraft offers many styles of outlets and lamps: Single receptacle, Twist lock, Duplex outlet box, Triple tap, Quad outlet box, Reverse plug, Flying lead, LED.



L 4545 123 3



L 4050 163 10



Interactive  
Reel Catalog



1.800.444.3134 | reelcraft.com

Model with Hose and Bumper	Cord Ending	Cord Specifications					Volts	Amps	Shipping Weight		Size Index
		ft	m	# Cond	AWG	Type***			lbs	kg	
<b>Triple Tap Power Cord Reels</b>											
L 4050 163 9	Triple tap outlet NEMA 5-15R, Inlet straight blade plug NEMA 5-15P	50	15	3	16	SJE00W	125	13	26	12	1
L 4545 123 9*		45	14	3	12	SJE00W	125	15	28	13	1
L 70075 123 9		75	23	3	12	SJE00W	125	15	71	32	5
L 70100 123 9		100	30	3	12	SE00W	125	15	75	34	5
L 4545 123 9G*	Triple tap outlet w/GFCI** NEMA 5-15R, Inlet straight blade plug NEMA 5-15P	45	14	3	12	SJE00W	125	15	29	13	1
L 70100 123 9G		100	30	3	12	SJE00W	125	15	76	34	5
L 4545 123 9GC	Triple tap outlet w/GFCI* NEMA 5-15R Inlet twist lock plug NEMA L5-15P	45	14	3	12	SJE00W	125	15	29	13	1
<b>Single Receptacle Power Cord Reels</b>											
L 3030 123 3	Single receptacle NEMA 5-15R, Inlet straight blade plug NEMA 5-15P	30	9	3	12	SJTO	123	15	23	10	8
L 4050 163 3		50	15	3	16	SJTOW	125	13	26	12	1
L 4545 123 3*		45	14	3	12	SJE00W	125	15	27	12	1
L 5550 123 3		50	15	3	12	SJE00W	125	15	44	20	3
L 70075 123 3		75	23	3	12	SE00W	125	15	70	32	5
L 70100 123 3		100	30	3	12	SE00W	125	15	74	34	5
L 425 123 3A	Single receptacle NEMA 5-20R, Inlet straight blade plug NEMA 5-20P	25	8	3	12	SJE00W	125	20	25	11	1
L 4545 123 3A*		45	14	3	12	SJE00W	125	20	28	13	1
L 5550 123 3A		50	15	3	12	SJE00W	125	20	44	20	3
L 70075 123 3A		75	23	3	12	SE00W	125	20	70	32	5
L 70100 123 3A*		100	30	3	12	SE00W	125	20	81	37	5
L 4545 123 3AC	Single receptacle NEMA 5-20R, Inlet twist lock plug NEMA L5-20P	45	14	3	12	SJE00W	125	20	28	13	1
L 70075 123 3AC		75	23	3	12	SE00W	125	20	70	32	5
L 4545 123 3B	Twist lock single receptacle NEMA L5-20R, nlet straight blade plug NEMA 5-20P	45	14	3	12	SJE00W	125	20	28	13	1
L 5550 123 3B		50	15	3	12	SJE00W	125	20	44	20	3
L 70100 123 3B		100	30	3	12	SE00W	125	20	74	34	5
<b>Duplex and Quad Box Power Cord Reels</b>											
L 3030 123 7Q	Quad box outlet NEMA 5-20R, Inlet straight blade plug NEMA 5-20P	30	9	3	12	SJTO	125	20	25	11	8
L 4545 123 7*	Duplex box outlet with GFCI** NEMA 5-15R, Inlet straight blade plug NEMA 5-15P	45	14	3	12	SJE00W	125	15	29	13	1
L 5550 123 7*		50	15	3	12	SE00W	125	20	45	20	3
L 4525 123 7A	Duplex box outlet with GFCI** NEMA 5-20R, Inlet straight blade plug NEMA 5-20P	25	8	3	12	SJE00W	125	20	27	12	1
L 4545 123 7A*		45	14	3	12	SJE00W	125	20	29	13	1
L 5550 123 7A		50	15	3	12	SE00W	125	20	45	20	3
L 70100 123 7A		100	30	3	12	SE00W	125	20	76	34	5
L 4545 123 7AC	Duplex box outlet with GFCI NEMA 5-20R, Inlet twist lock plug NEMA L5-20P	45	14	3	12	SJE00W	125	20	29	13	1
L 4545 123 7B	Duplex box outlet NEMA 5-20R, Inlet straight blade plug NEMA 5-20P	45	14	3	12	SJE00W	125	20	29	13	1
L 4545 123 7BC	Duplex box outlet NEMA 5-20R, Inlet twist lock plug NEMA L5-20P	25	8	3	12	SJE00W	125	20	27	12	1

**\*Most popular models** For indoor non-weathertight applications only. All models UL listed at 125 Volt 60 HZ single phase. Swing brackets or pivot bases should be used if cords are pulled at more than 45°. \*\*The GFCI Receptacle is designed to protect from line-to-ground shock hazards. It does not protect against short circuits or overloads; this is the function of the fuse or circuit breaker. \*\*\*Cord type designation shows all combinations of cord types that may be used, only UL approved cord types will be used.



Interactive Reel Catalog



1.800.444.3134 | reelcraft.com

Model with Hose and Bumper	Cord Ending	Cord Specifications					Volts	Amps	Shipping Weight		Size Index
		ft	m	# Cond	AWG	Type***			lbs	kg	
<b>Duplex and Quad Box Power Cord Reels</b>											
L 4525 123 7Q	Quad box outlet NEMA 5-20R, Inlet straight blade plug NEMA 5-20P	25	8	3	12	SJE00W	125	20	27	12	1
L 4545 123 7Q		45	14	3	12	SJE00W	125	20	29	13	1
L 5550 123 7Q		50	15	3	12	SJE00W	125	20	45	20	3
L 4525 123 7QC	Quad box outlet NEMA 5-20R, Inlet twist lock plug NEMA L5-20P	25	8	3	12	SJE00W	125	20	27	12	1
L 4545 123 7QC		45	14	3	12	SJE00W	125	20	29	13	1
L 70100 123 7QC		100	30	3	12	SE00W	125	20	76	34	5
<b>Flying Lead and Bare Power Cord Reels</b>											
L 3030 123 X	Flying Lead both ends	30	9	3	12	SJTO	125	20	24	11	8
L 4050 163 X	Flying Lead	50	15	3	16	SJE00W	125	13	26	12	1
L 4545 123 X		45	14	3	12	SJE00W	125	20	25	11	1
L 5550 123 X		50	15	3	12	SJE00W	125	20	35	16	3
L 70100 123 X		100	30	3	12	SE00W	125	20	73	33	6
L 5550 124 X		50	15	4	12	SE00W	--	--	43	20	3
L 70100 124 X		100	30	4	12	SE00W	--	--	75	34	6
L 5750 103 X		50	15	3	10	SE00W	125	30	55	25	4
L 7050 104 X		50	15	4	10	SE00W	--	--	65	29	7
L 4500		Bare Reel	45	14	3	12	SJE00W	125	20	21	10
L 70100	100		30	3	12	SE00W	125	20	58	26	6
L 70100 124	100		30	4	12	SE00W	--	--	75	34	6
L 5000	35		11	3	10	SO	125	30	29	13	2
L 5700	50		15	3	10	SE00W	125	30	37	17	4
L 7000	35		11	4	6	S00W	--	--	41	19	7
<b>Reverse Plug Power Cord Reels</b>											
L 4035 163 3-RP	Outlet straight blade plug NEMA 5-15P, Inlet single receptacle NEMA 5-15R	35	11	16	3	SJE00W	125	13	26	12	1
L 4050 163 3-RP		50	15	16	3	SJE00W	125	13	29	13	1
L 4545 123 3-RP		45	14	12	3	SJE00W	125	15	28	13	1
L 4545 123 3A-RP	Outlet straight blade plug NEMA 5-20P, Inlet single receptacle NEMA 5-20R	45	14	12	3	SJE00W	125	20	28	13	1
<b>Light Cord Reels</b>											
L 4035 163 10	LED lamp w/ outlet, Inlet straight blade plug NEMA 5-15P	35	11	16	3	SJTOW	125	12	26	12	1
L 4050 163 10		50	15	16	3	SJTOW	125	12	28	13	1
<b>NEMA 4 Power Cord Reels</b>											
L NM450 163 X	Flying Lead	50	15	16	3	SOW	600	9	43	20	9
L NM445 144 X		45	14	14	4	SOW	600	11	50	23	9
L NM450 123 X		50	15	12	3	SOW	600	18	50	23	9

**\*Most popular models** For indoor non-weathertight applications only. All models UL listed at 125 Volt 60 HZ single phase. Swing brackets or pivot bases should be used if cords are pulled at more than 45°. \*\*The GFCI Receptacle is designed to protect from line-to-ground shock hazards. It does not protect against short circuits or overloads; this is the function of the fuse or circuit breaker.

\*\*\*Cord type designation shows all combinations of cord types that may be used, only UL approved cord types will be used.


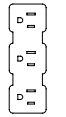










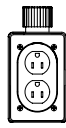
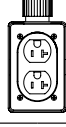
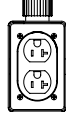
Interactive  
Reel Catalog



1.800.444.3134 | reelcraft.com

## Cord End Specifications

Triple Tap Power Cord Reels		
		<b>#9/9G/9GC - Triple Tap</b> 15 Amp molded triple tap. GFCI protection on #9G and #9GC only. NEMA 5-15R
Single Receptacle Power Cord Reels		
		<b>#3 - Single Receptacle</b> Single 15 AMP with clamp type strain relief for 16 and 12 AWG cord. NEMA 5-15R
		<b>#3A/3AC - Single Receptacle</b> Single 20 AMP. NEMA 5-20R
		<b>#3B - Twist Lock Receptacle</b> Single 20 AMP with twist lock connector. NEMA L5-20R

Flying Lead and Bare Power Cord Reels		
		<b>X - Flying Lead</b> Flying leads on inlet and outlet and conduit box.
Duplex and Quad Box Power Cord Reels		
		<b>#7 - Duplex Outlet Box</b> 15 AMP duplex outlet box with GFCI protection. Includes flip cover. NEMA 5-15R
		<b>#7A/7AC/7B/7BC - Duplex Outlet Box</b> 20 AMP duplex outlet box. GFCI protection on #7A/7AC. Includes flip cover. NEMA 5-20R
		<b>#7Q/7QC - Quad Box</b> 20 AMP quad outlet box. Four receptacles. Does not include flip cover. NEMA 5-20R

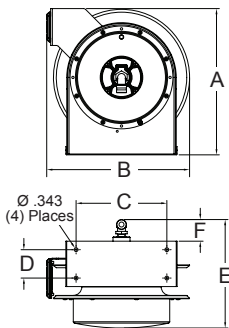
## Accessories: Adjustable Cord Bumpers

Model	Outside Diameter of Cord		Cord Specifications		
	in (mm)		AWG	mm <sup>2</sup>	# Cond
600193	.320(8) - .530(14)		16	1.33	3
1-HR1004-A	.438(11) - .625(16)		12	3.32	3
1-HR1004	.625(16) - .749(19)		12	3.32	3
3-HR1004-3	1.06(27) - 1.38(35)		6	8.00	3

## Mounting: Pivot Bases and Swing Brackets

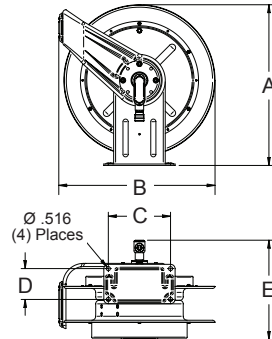
Part #	Description	For Reel Series
S600608	340° Reel pivot base - Black	3000 / 4000 / 5000 / 7000
600626	Swing Bracket - Black	4000 / 5000 / 7000
600993	Swing Bracket - Red	4000 / 5000

### Dimensions - Size Index



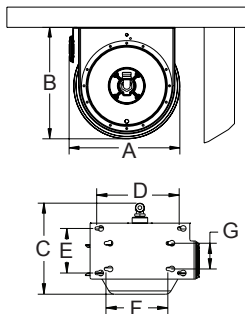
	1		2		3		4	
	in	mm	in	mm	in	mm	in	mm
A	12 7/8	327	14 3/8	365	17 5/8	448	17 5/8	448
B	12 5/8	321	14 1/4	362	16 3/4	425	16 3/4	425
C	8	203	9 3/4	248	9 3/4	248	9 3/4	248
D	2 1/2	64	2 1/2	64	2 1/2	64	2 1/2	64
E	9 3/8	239	10 1/2	267	10 1/2	267	12 1/2	318
F	1 3/4	44	2 1/8	54	2 1/8	54	2 1/8	54

### Dimensions - Size Index



	5		6		7	
	in	mm	in	mm	in	mm
A	20 1/4	514	20 1/4	514	20 1/4	514
B	19 3/4	502	19 3/4	502	19 3/4	502
C	7 13/16	198	7 13/16	198	7 13/16	198
D	3 7/8	98	3 7/8	98	3 7/8	98
E	11 3/4	298	12 1/2	318	14 5/8	371

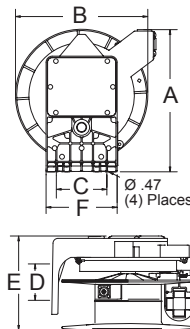
### Under Bench Mount



### L 3000

#### Dimensions - Size Index

8	Dimensions						
	A	B	C	D	E	F	G
in	12 7/8	12	6 7/8	4	6 7/8	9 3/4	3
mm	326	305	173	102	173	248	76



### NEMA 4 Power Cord Reels

#### Dimensions - Size Index

9	Dimensions					
	A	B	C	D	E	F
in	14 1/2	13 1/2	14 7/16	13 1/16	9 5/8	7 1/4
mm	368	343	113	78	244	184

