

C23022

SERIES 20000

Versatile Spray Reel

Aluminum construction is **50% lighter in weight** than carbon steel and corrosion resistant

Painted with a polyester powder-coated paint that **protects against salt spray** and **rated for up to 20% bleach solution**

3/4" fluid path constructed of 316 stainless steel is **designed to handle harsh chemicals** and is **rated up to 4500 PSI**

Hardware includes a two-coat plating process that **resists salt spray and acids**

Includes spring loaded latching mechanism and drag brake to control over spooling



FINISH

Available in uncoated or polyester powder-coated for salt spray resistance and up to 20% bleach exposure.



VERSATILE DESIGN

Innovative design allows for the handle or swivel to be easily swapped from one side to the other.



Interactive
Reel Catalog

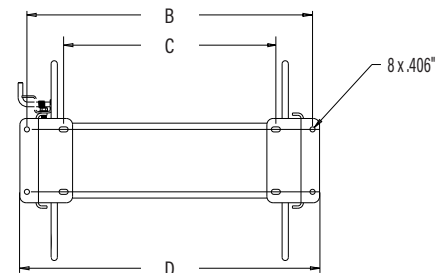
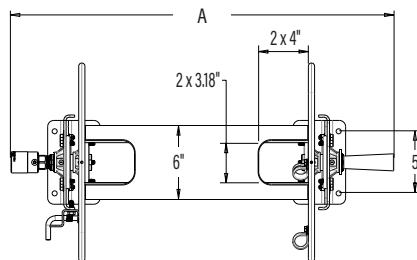
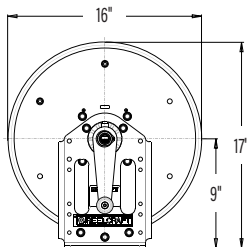


1.800.444.3134 | reelcraft.com

Model without Hose & Bumper	Finish	Shipping Weight		Max Pressure	
		lbs	kg	psi	bar
Medium Pressure Water Reels		Maximum Temperature 150°F (65°C) Maximum Working Pressure is at 70°F (20°C)			
C23012	Powder Coated	15	7	3000	207
C23018	Powder Coated	17.5	8	3000	207
C23022	Powder Coated	19.5	9	3000	207
C23012 310	Uncoated	15	7	3000	207
C23018 310	Uncoated	17.5	8	3000	207
C23022 310	Uncoated	19.5	9	3000	207
High Pressure Water Reels		Maximum Temperature 210°F (99°C) Maximum Working Pressure is at 70°F (20°C)			
C23012 H	Powder Coated	15	7	4500	310
C23018 H	Powder Coated	17.5	8	4500	310
C23022 H	Powder Coated	19.5	9	4500	310
C23012 H 310	Uncoated	15	7	4500	310
C23018 H 310	Uncoated	17.5	8	4500	310
C23022 H 310	Uncoated	19.5	9	4500	310

Medium pressure reels supplied with Stainless Steel 3000 psi swivel.

High pressure reels supplied with Carbon Steel 4500 psi swivel.



OPTIONAL SPRAY REEL ACCESSORIES



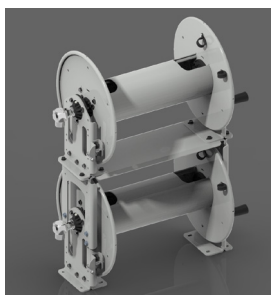
Side Wind Roller Guide Kit

Roller guides help prevent premature hose wear, even in the most demanding jobs. Our SW Roller Guide Kit makes it easier to pull the hose at higher elevations.



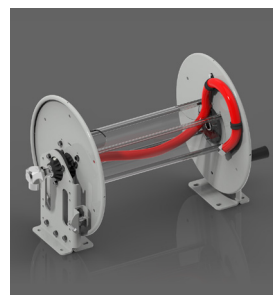
Bottom Wind Roller Guide Kit

Roller guides help prevent premature hose wear, even in the most demanding jobs. Our BW Roller Guide Kit makes it easier to pull the hose at lower elevations.



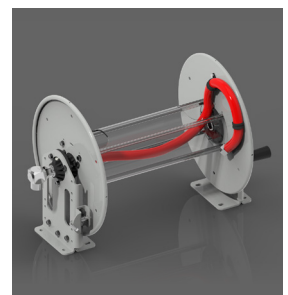
Stacking Brackets Kit

Stacking brackets are easy to install, allowing you to customize your setup to suit your needs.



Whip Hose—Chemical

- 3/4" ID, Stainless Steel Ends
- 200 PSI



Whip Hose—Power Wash

- 1/2" ID
- Plated Carbon Steel Ends
- 4300 PSI

Hose Diameter				
ID	3/8"	1/2"	5/8"	3/4"
OD	0.71"	0.85"	0.94"	1.08"
Spool Width	Hose Capacity			
12"	300'	200'	150'	125'
18"	500'	300'	250'	200'
22"	600'	350'	300'	250'

Dimensions - Width

	Spool	12"	18"	22"
A	Hand Crank	25"	31"	35"
B	Mounting Pattern	16.88"	22.88"	26.88"
C	Mounting Pattern	11"	17"	21"
D	Mounting Pattern	18"	24"	28"

